

# Be With Me Lord

32

1. Be with me, Lord I can-not live with-out Thee,  
I dare not try to take one step a-lone,

The image shows a musical score for the hymn 'Be With Me Lord'. It consists of two systems of music. Each system has a vocal line (treble clef) and a piano accompaniment line (bass clef). The key signature is three flats (B-flat, E-flat, A-flat) and the time signature is 4/4. The lyrics are: '1. Be with me, Lord I can-not live with-out Thee, I dare not try to take one step a-lone,'. The music features a simple, hymn-like melody with a steady accompaniment.

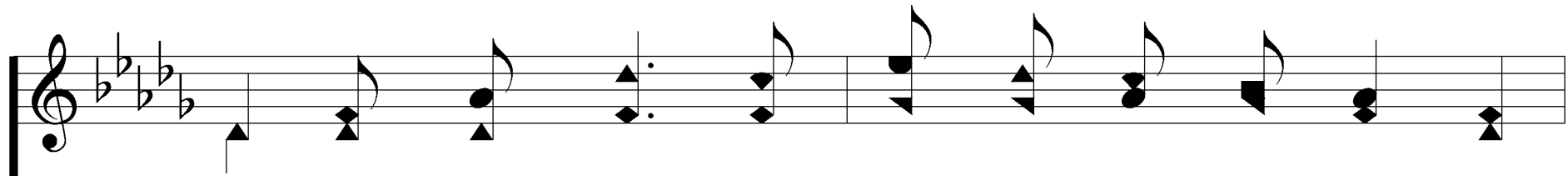
Heb. 13:5  
Words: Thomas O. Chisholm, 1866-1960  
Music: Lloyd O. Sanderson, 1901-1992

© 1935, Renewal 1963, Leon B. Sanderson, owner.  
All rights reserved. Used by permission.

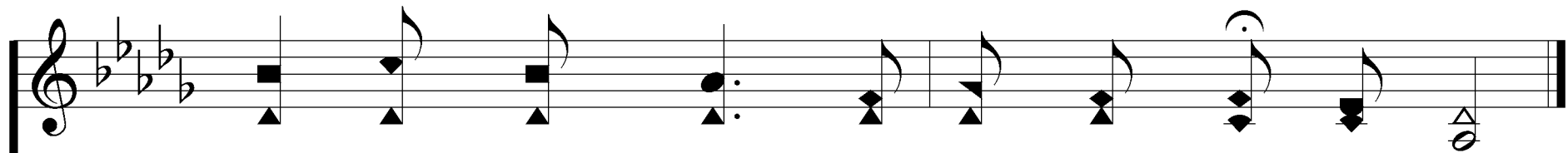

Presentation © 2006 by Taylor Publications

# Be With Me Lord

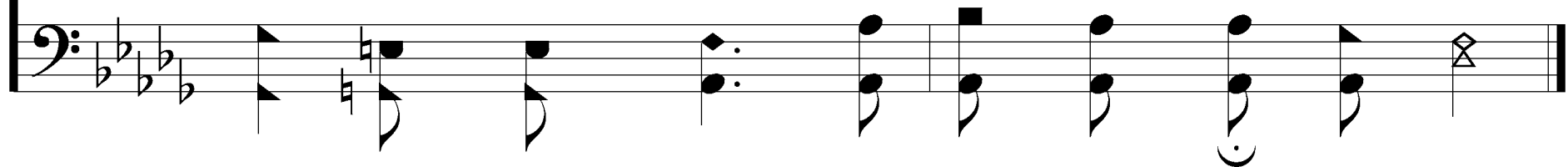
32

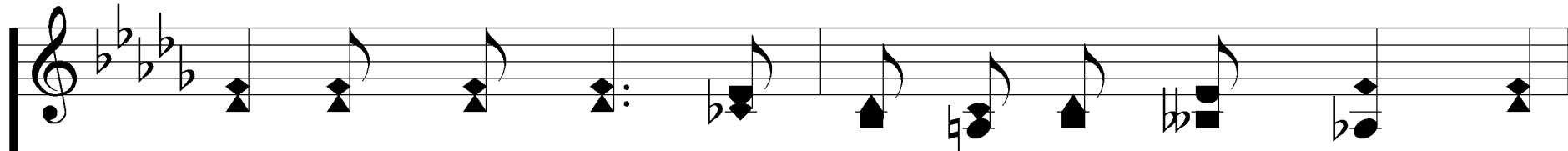


I can - not bear the loads of life, un - aid - ed,



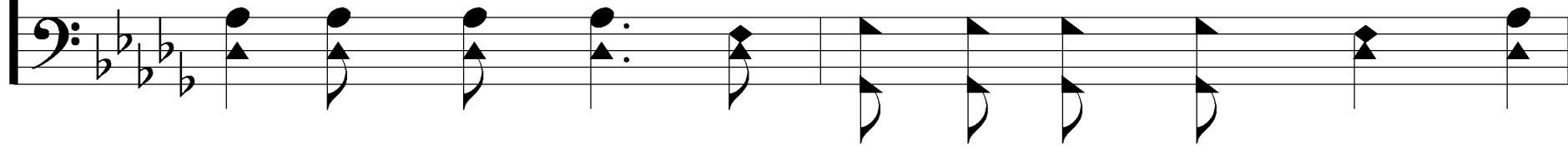
I need Thy strength to lean my - self up - on.



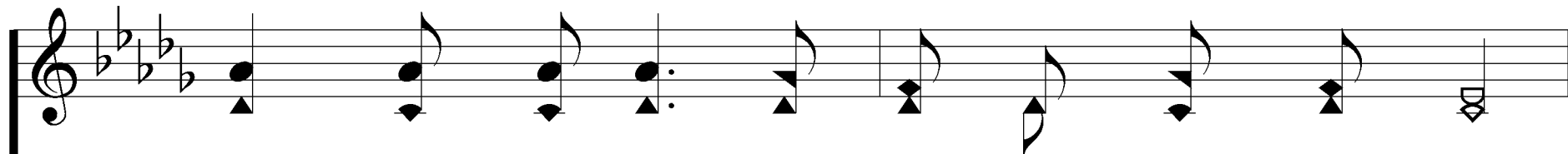


Musical notation for the first staff of the first system, featuring a treble clef and a key signature of three flats.

2. Be with me, Lord, and then if dan-gers threat-en,

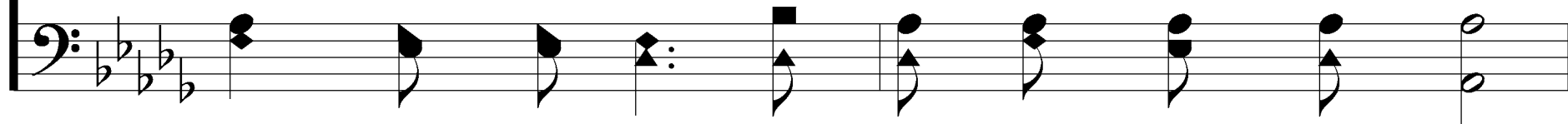


Musical notation for the second staff of the first system, featuring a bass clef and a key signature of three flats.



Musical notation for the first staff of the second system, featuring a treble clef and a key signature of three flats.

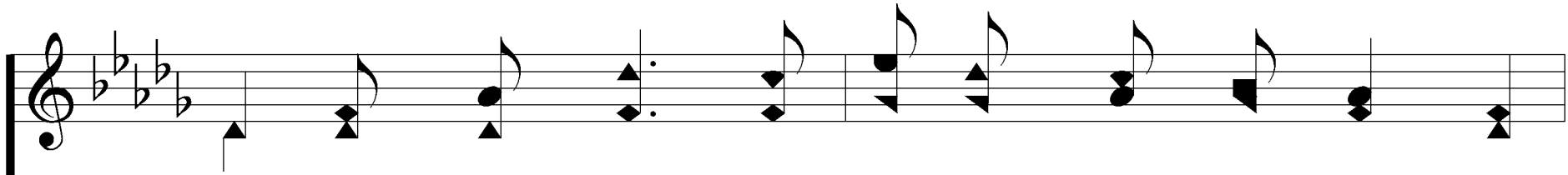
If storms of tri - al burst a - bove my head,



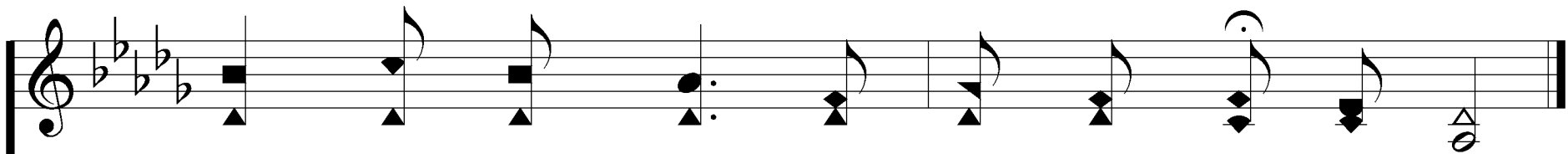
Musical notation for the second staff of the second system, featuring a bass clef and a key signature of three flats.

# Be With Me Lord

32

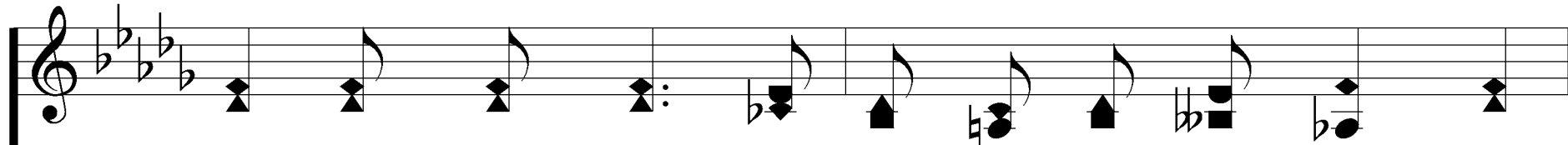


If lash - ing seas leap ev - 'ry where a - bout me,

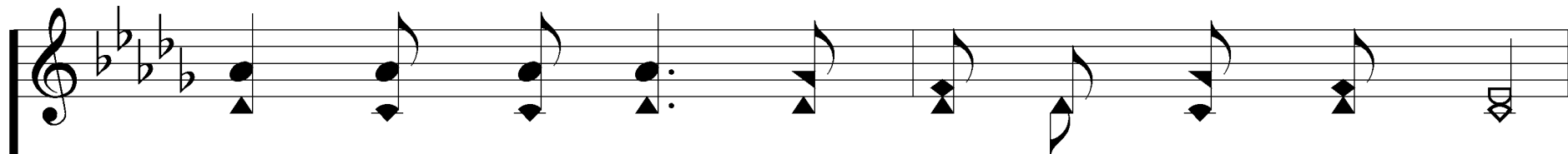
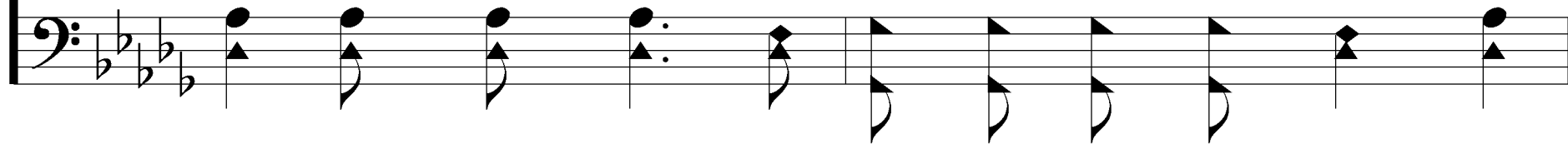


They can - not harm, or make my heart a - fraid.

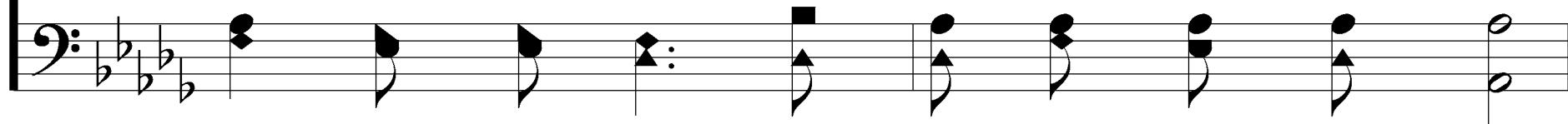




3. Be with me, Lord! No oth - er gift or bless - ing

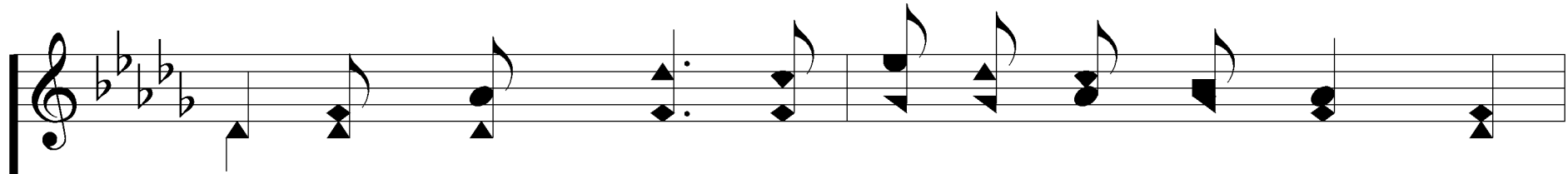


Thou couldst be stow could with this one com - pare

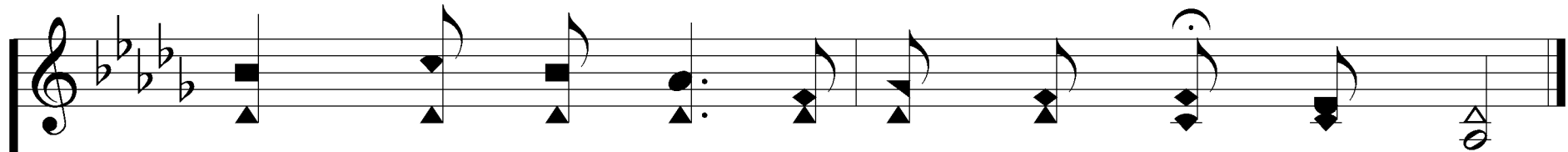
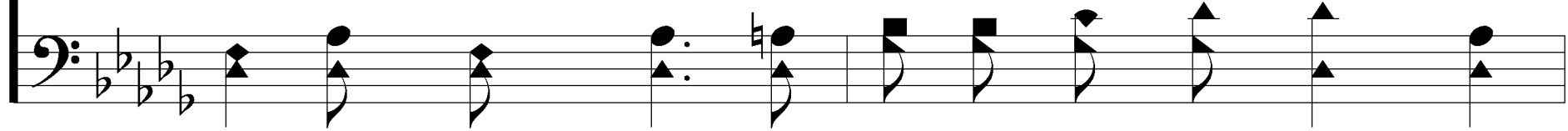


# Be With Me Lord

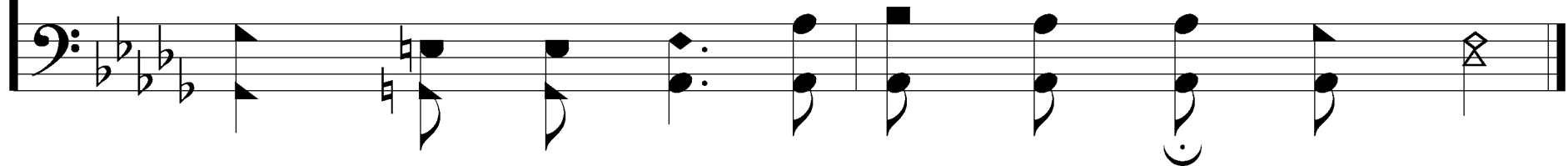
32

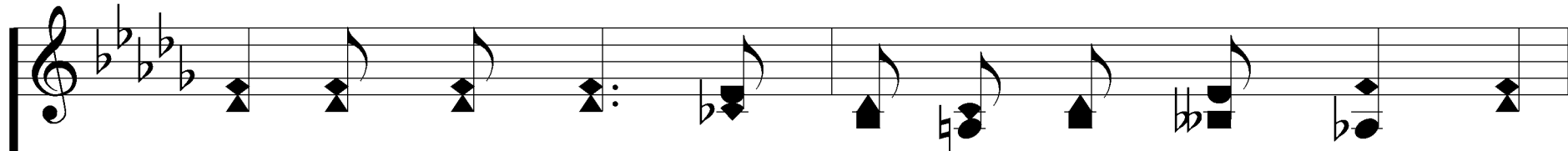


A con-stant sense of Thy a -bid -ing pres-ence,

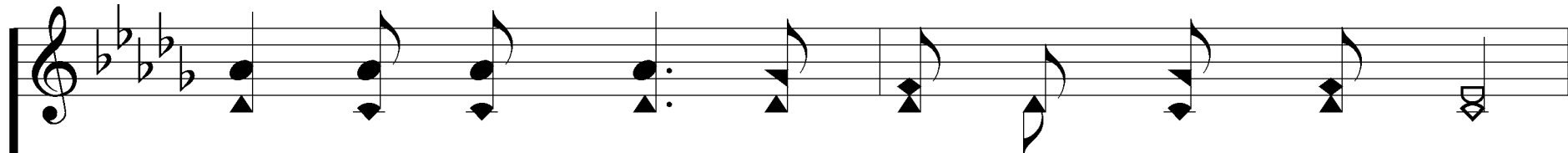
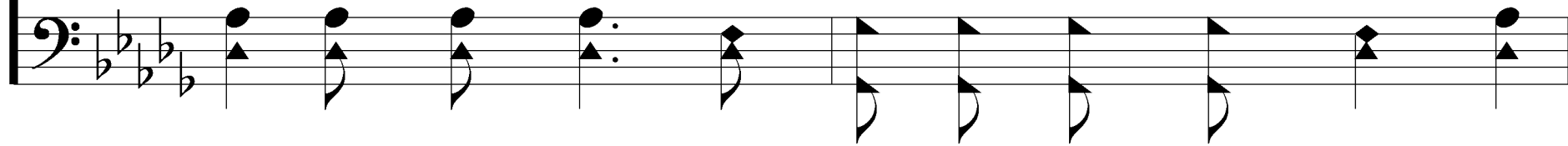


Where - e'er I am, to feel that Thou art near.

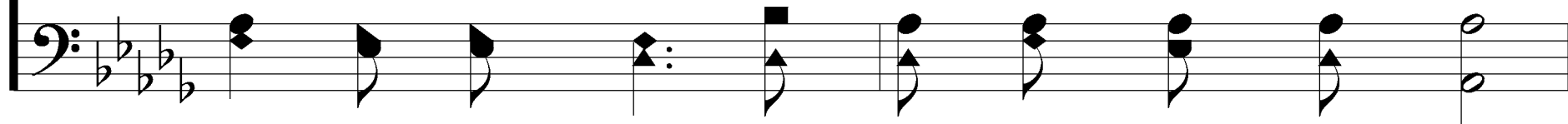


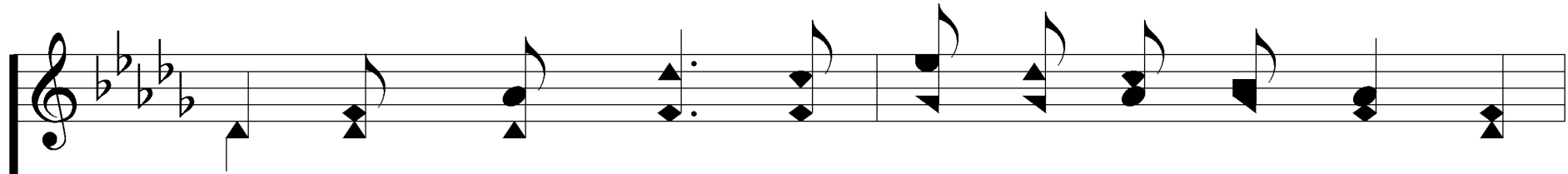


4. Be with me, Lord, when lone-li-ness o'er-takes me,

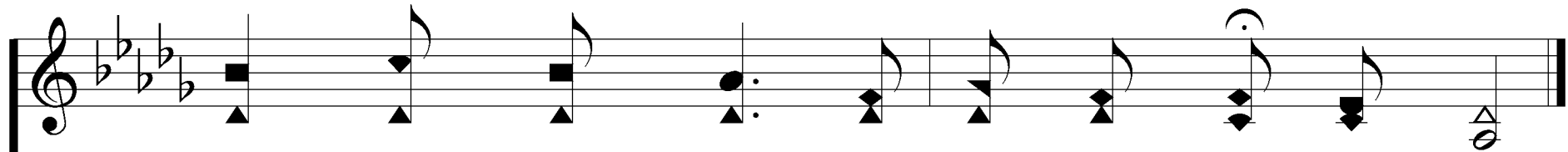


When I must weep a - mid the fires of pain,





And when shall come the hour of "my de-part-ure"



For "worlds un-known," O Lord, be with me then.

