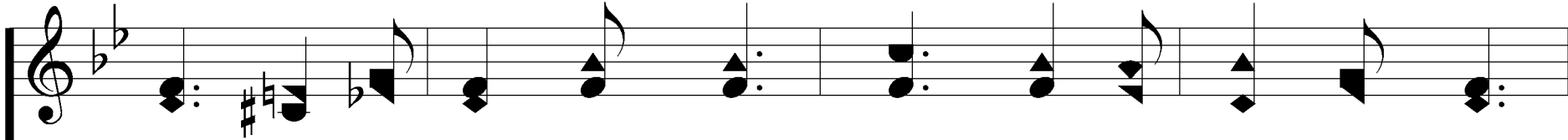
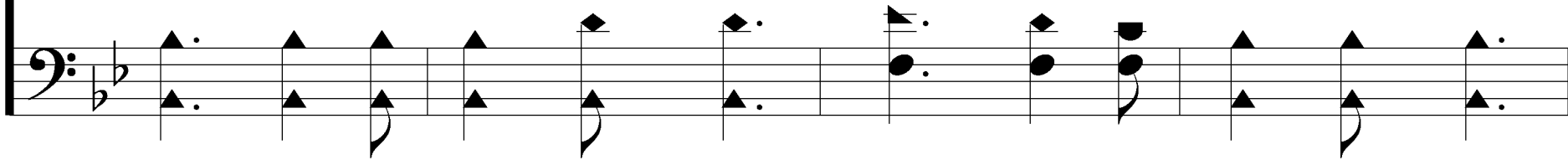


1. Clos - er to Thee, near to Thy side,

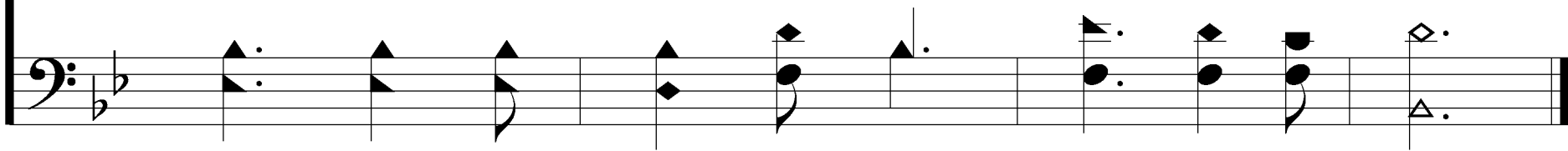
Clos - er dear Lord, I would a - bide;



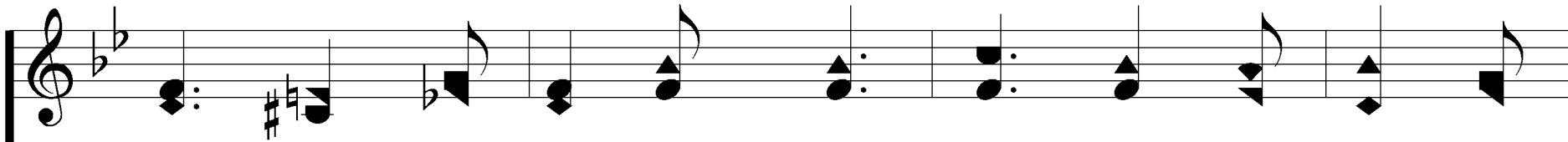
Hold me in Thy em-brace, 'Neath ev-'ry smile of grace,



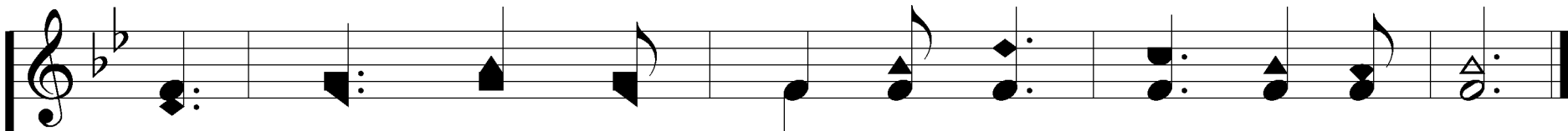
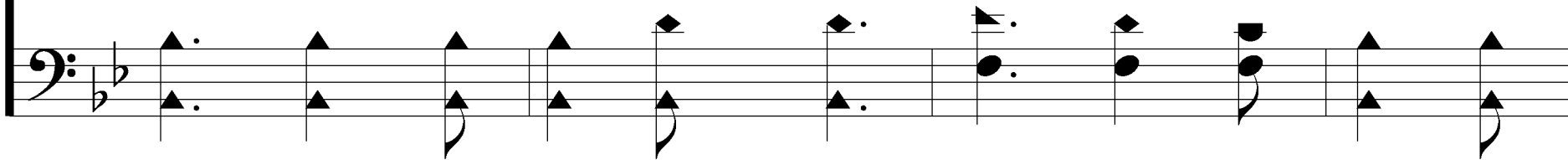
Grant me, Thy child, a place Clos-er to Thee.



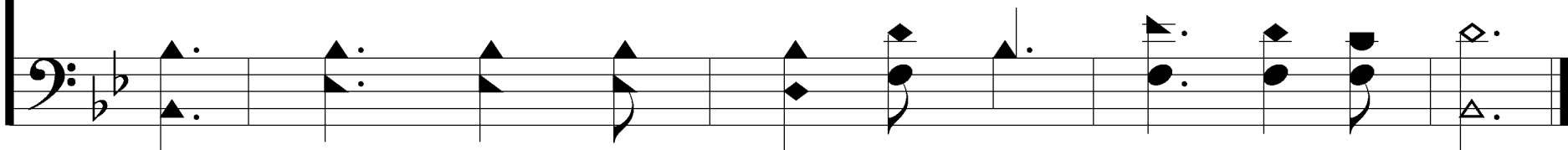


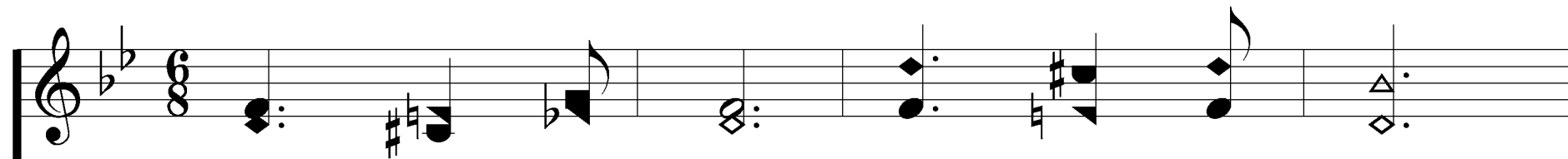


Guide me when I would stray, Keep me from sin each



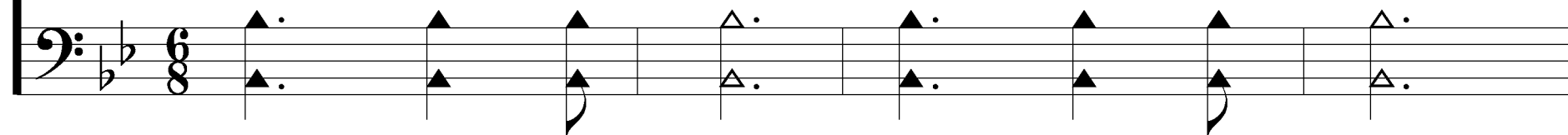
day, Draw me, dear Lord, I pray, Clos-er to Thee.



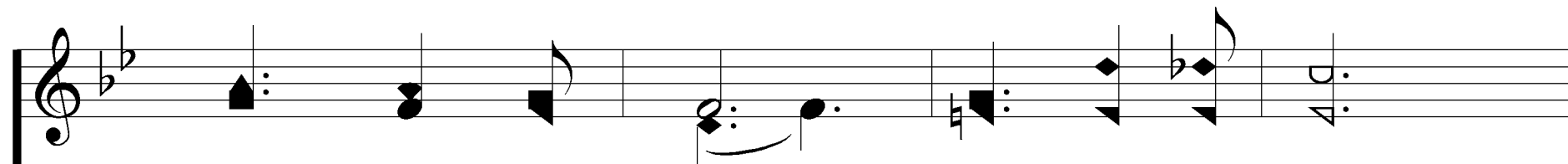


Musical notation for the first system, treble clef, 6/8 time signature. The melody consists of the following notes: G4 (quarter), A4 (quarter), B4 (quarter), C5 (quarter), B4 (quarter), A4 (quarter), G4 (quarter), F4 (quarter), E4 (quarter), D4 (quarter).

3. Clos - er to Thee, hap - py and free,

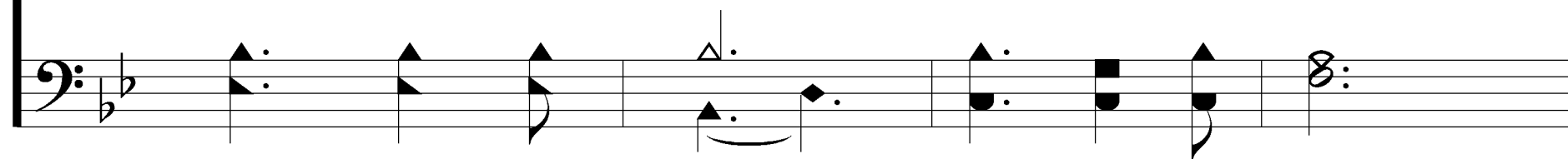


Musical notation for the first system, bass clef, 6/8 time signature. The accompaniment consists of the following notes: G3 (quarter), A3 (quarter), B3 (quarter), C4 (quarter), B3 (quarter), A3 (quarter), G3 (quarter), F3 (quarter), E3 (quarter), D3 (quarter).

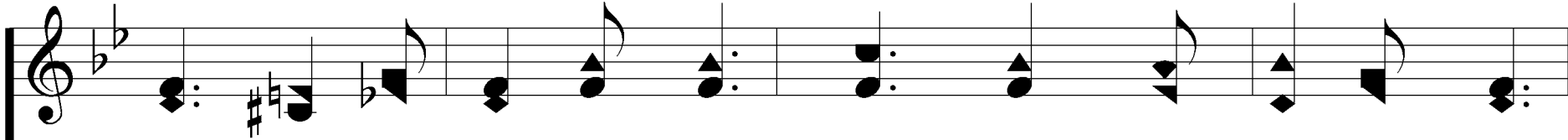


Musical notation for the second system, treble clef, 6/8 time signature. The melody consists of the following notes: G4 (quarter), A4 (quarter), B4 (quarter), C5 (quarter), B4 (quarter), A4 (quarter), G4 (quarter), F4 (quarter), E4 (quarter), D4 (quarter).

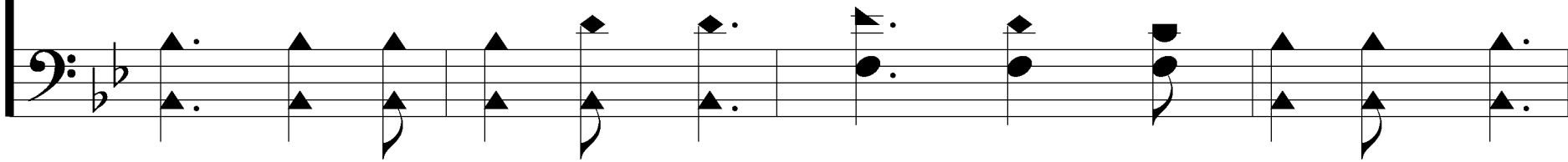
Grant me, O Lord, ev - er to be;



Musical notation for the second system, bass clef, 6/8 time signature. The accompaniment consists of the following notes: G3 (quarter), A3 (quarter), B3 (quarter), C4 (quarter), B3 (quarter), A3 (quarter), G3 (quarter), F3 (quarter), E3 (quarter), D3 (quarter).



Hear me in ev-'ry cry, Stand near when I must die,



Then take me home on high, Clos-er to Thee.

