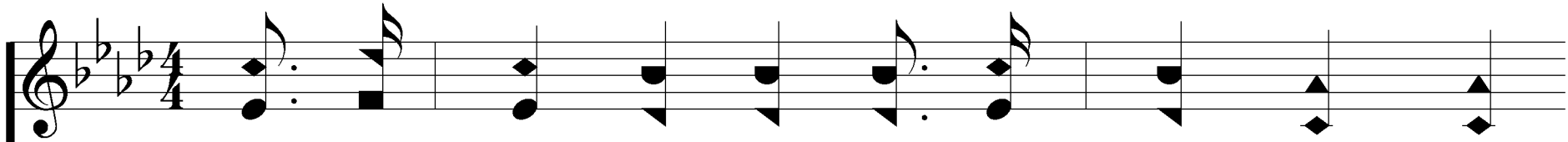
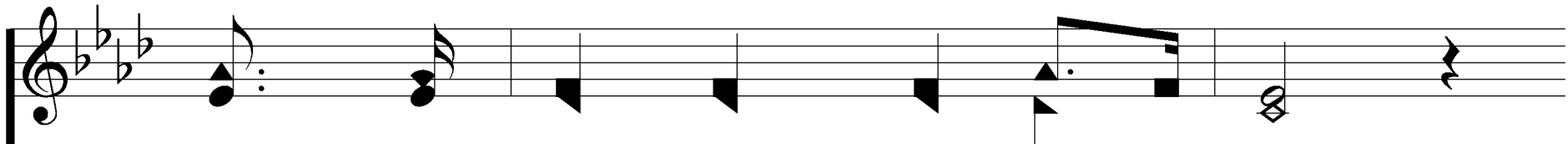
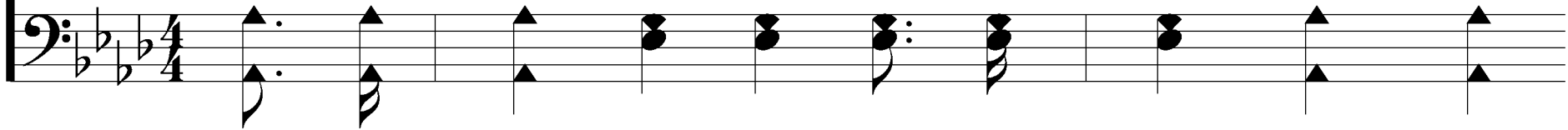


I Am Thine, O Lord

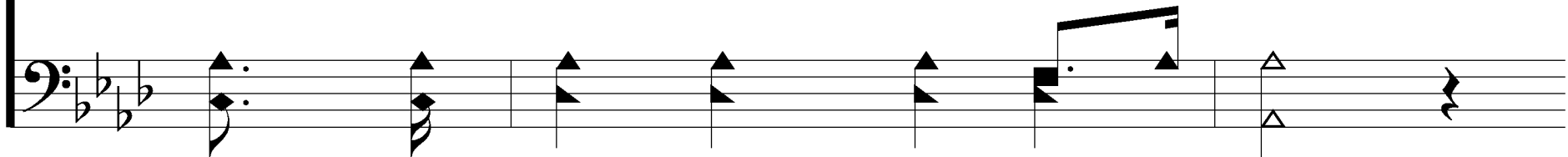
203



1. I am Thine, O Lord, I have heard Thy voice,



And it told Thy love to me;

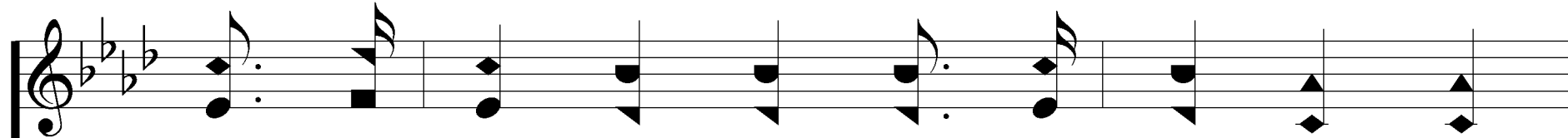


Rom. 7:22; Heb. 10:22

Words: Fanny J. Crosby

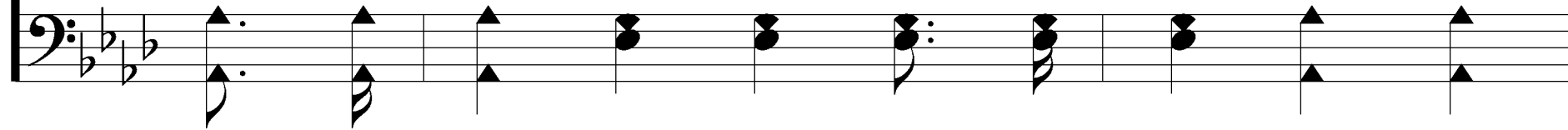
Music: William H. Doane

I Am Thine, O Lord

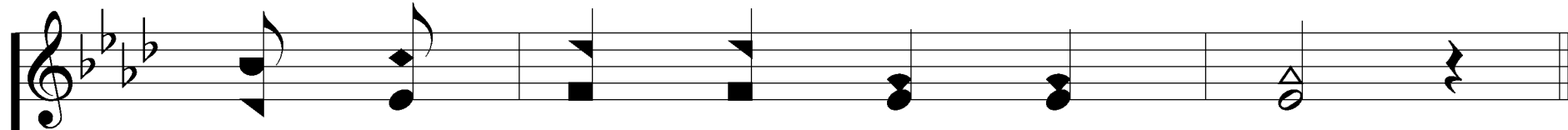


The first staff of music is written in treble clef with a key signature of one sharp (F#) and a 4/4 time signature. It contains the melody for the first line of the hymn.

But I long to rise in the arms of faith,

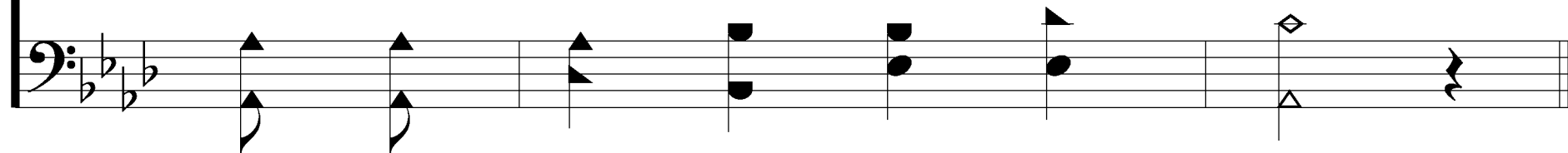


The second staff of music is written in bass clef with a key signature of one sharp (F#) and a 4/4 time signature. It contains the bass line for the first line of the hymn.



The third staff of music is written in treble clef with a key signature of one sharp (F#) and a 4/4 time signature. It contains the melody for the second line of the hymn.

And be clos - er drawn to Thee.



The fourth staff of music is written in bass clef with a key signature of one sharp (F#) and a 4/4 time signature. It contains the bass line for the second line of the hymn.

I Am Thine, O Lord

203

REFRAIN



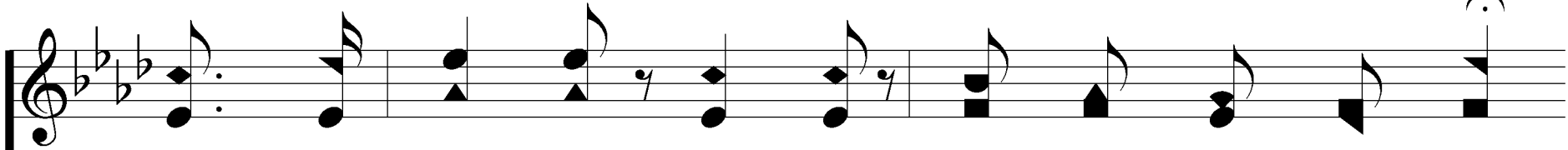
Draw me near - er, near-er, bless-ed Lord,
near-er, near-er,



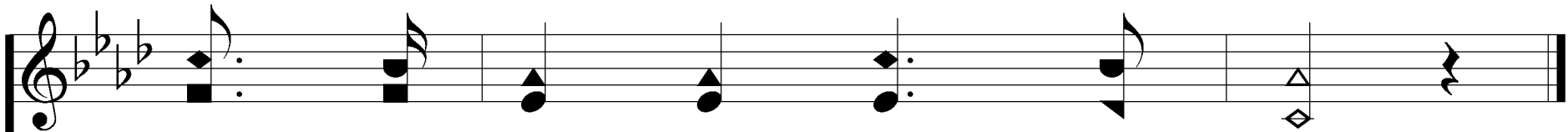
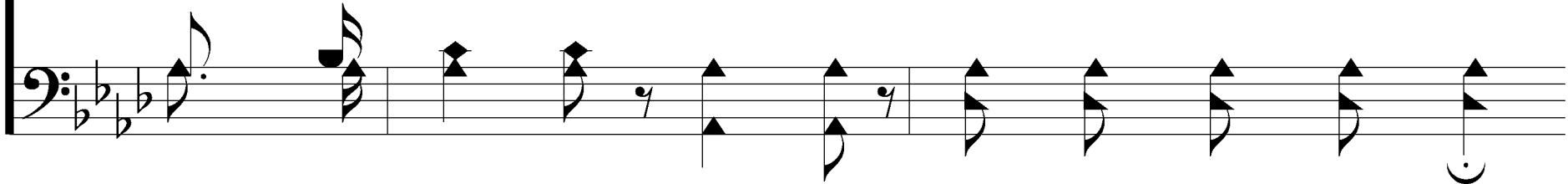
To the cross where Thou hast died;

I Am Thine, O Lord

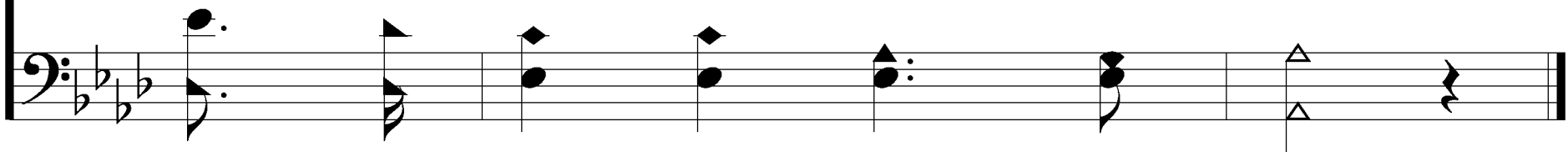
203



Draw me near-er, near-er, near-er, bless-ed Lord,



To Thy pre - cious, bleed - ing side.



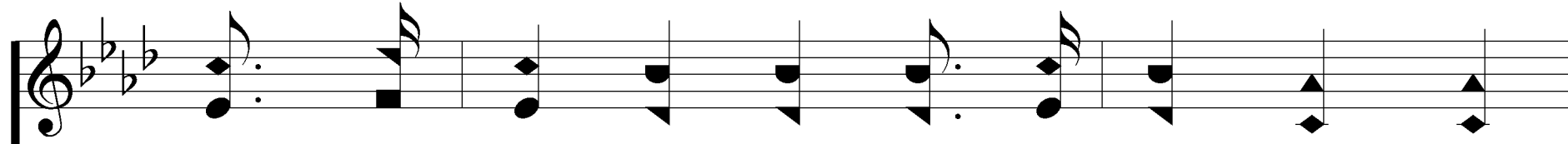


2. Con-se-crate me now to Thy ser-vice, Lord,

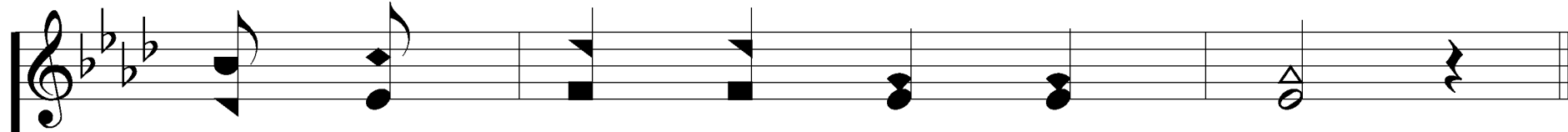
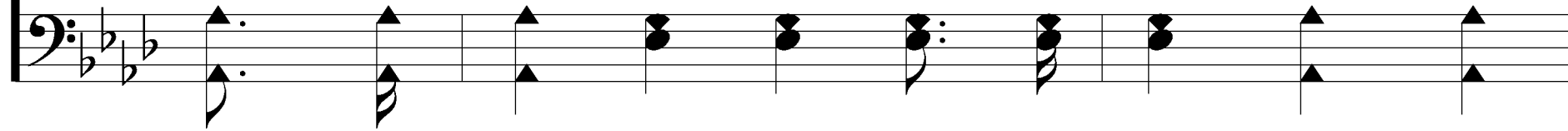


By the pow'r of grace di-vine;

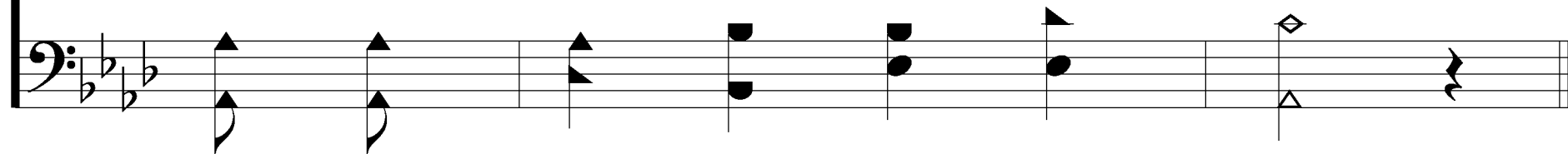
I Am Thine, O Lord



Let my soul look up with a stead-fast hope,



And my will be lost in Thine.



I Am Thine, O Lord

203

REFRAIN



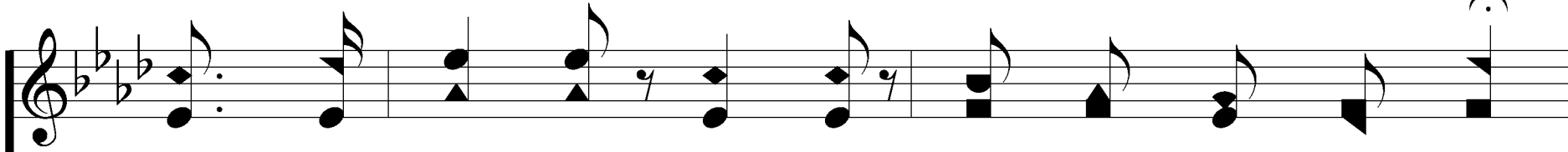
Draw me near - er, near-er, bless-ed Lord,
near-er, near-er,



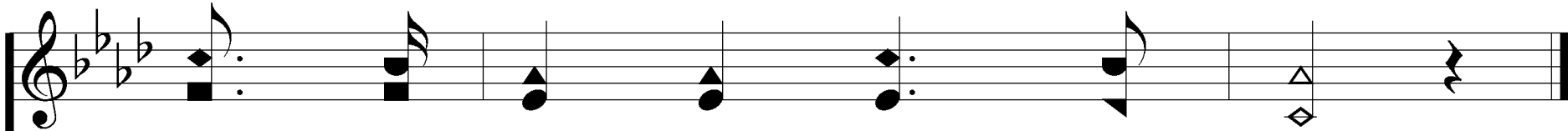
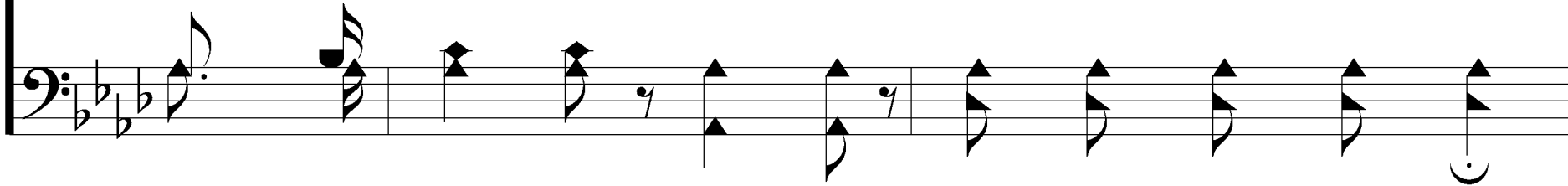
To the cross where Thou hast died;

I Am Thine, O Lord

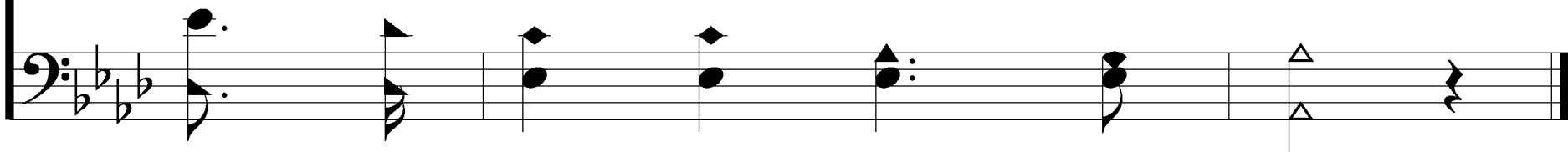
203



Draw me near-er, near-er, near-er, bless-ed Lord,

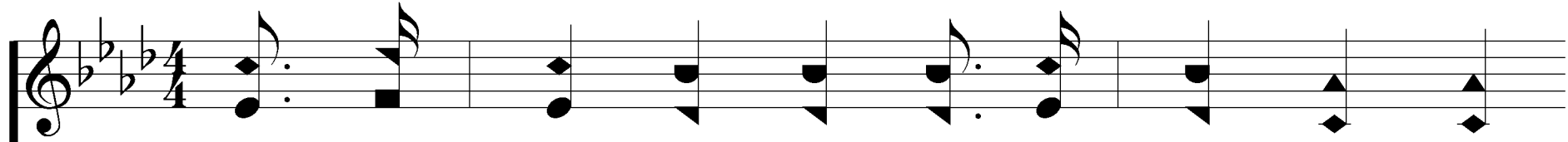


To Thy pre - cious, bleed - ing side.

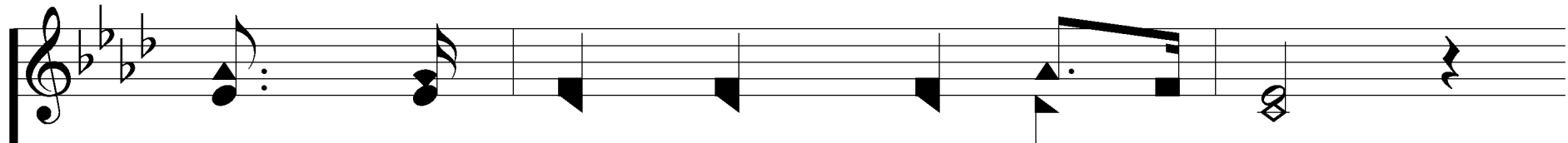
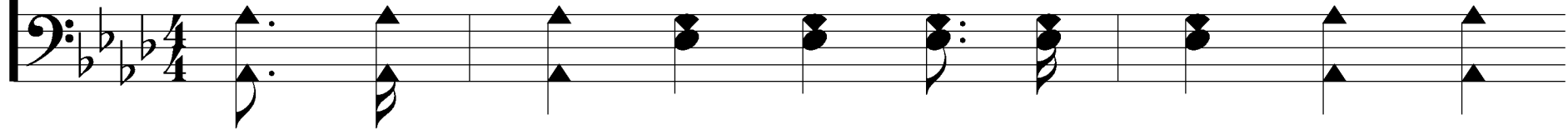


I Am Thine, O Lord

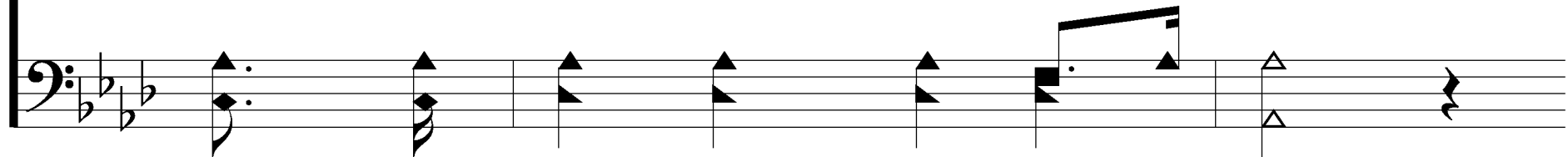
203



3. O the pure de-light of a sin-gle hour

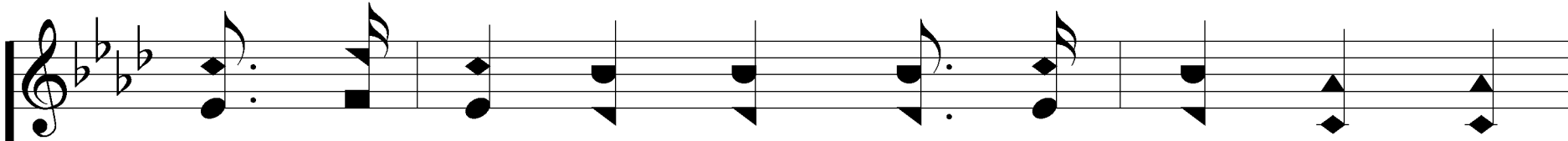


That be-fore Thy throne I spend,

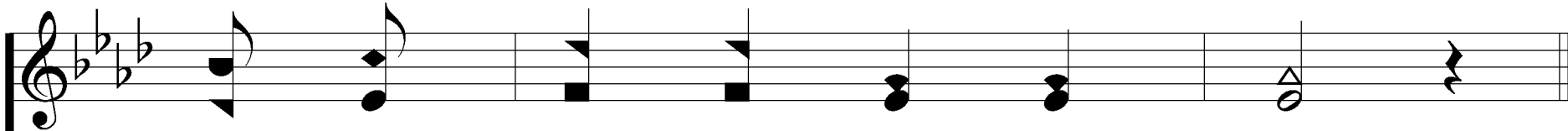
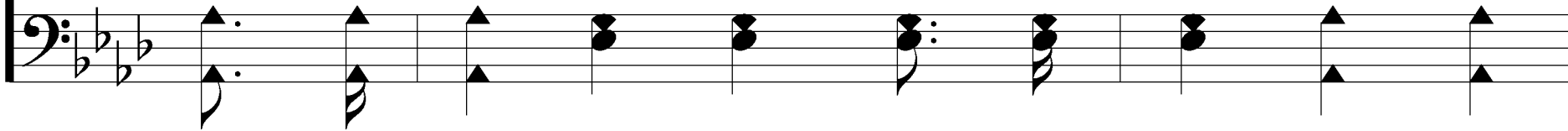


I Am Thine, O Lord

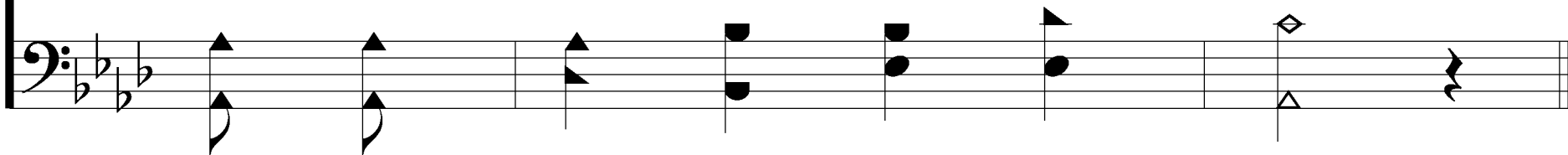
203



When I kneel in prayer, and with Thee, my God,



I com - mune as friend with friend!



I Am Thine, O Lord

203

REFRAIN



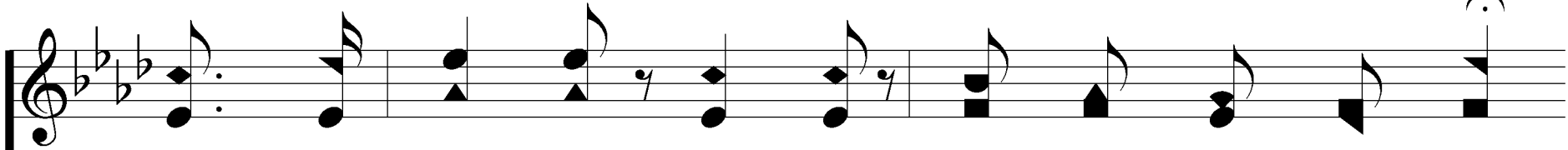
Draw me near - er, near-er, bless-ed Lord,
near-er, near-er,



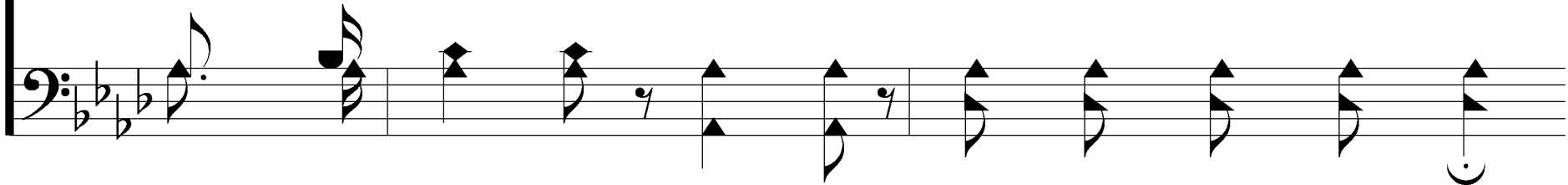
To the cross where Thou hast died;

I Am Thine, O Lord

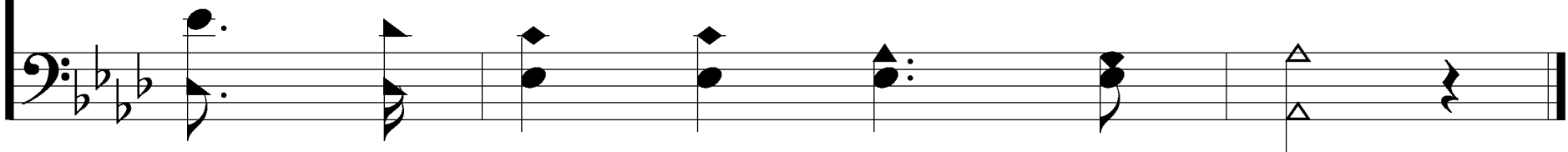
203

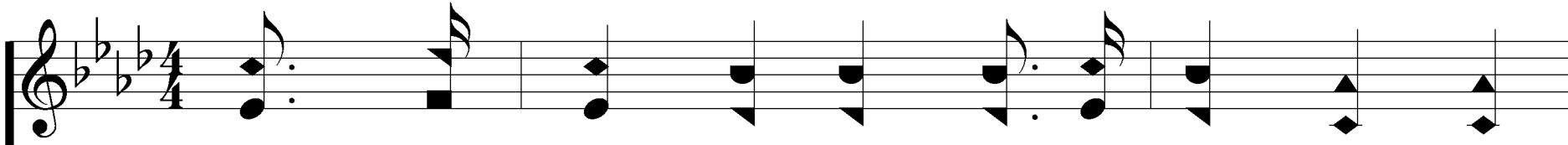


Draw me near-er, near-er, near-er, bless-ed Lord,

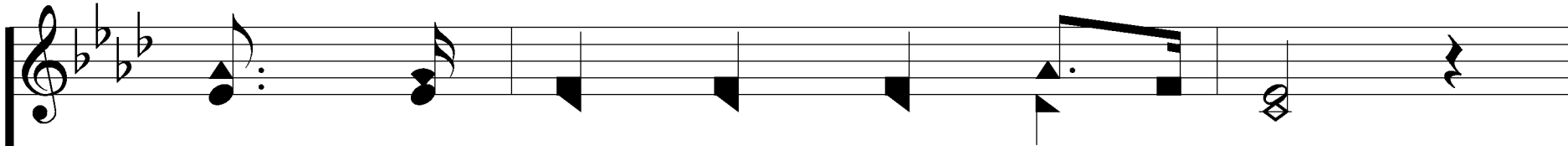
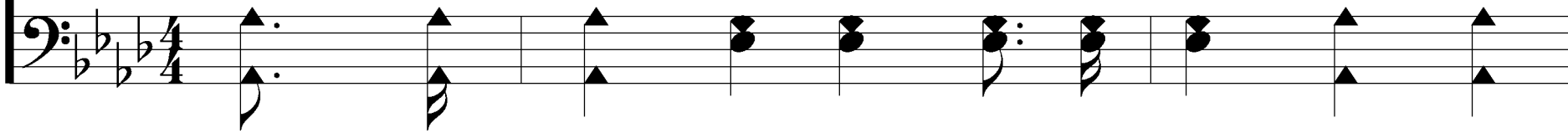


To Thy pre - cious, bleed - ing side.

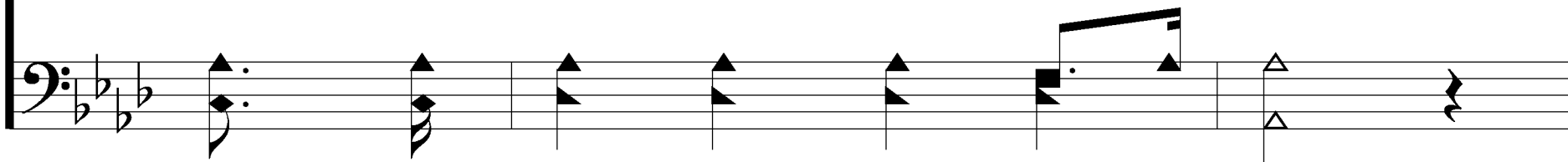




4. There are depths of love that I can - not know

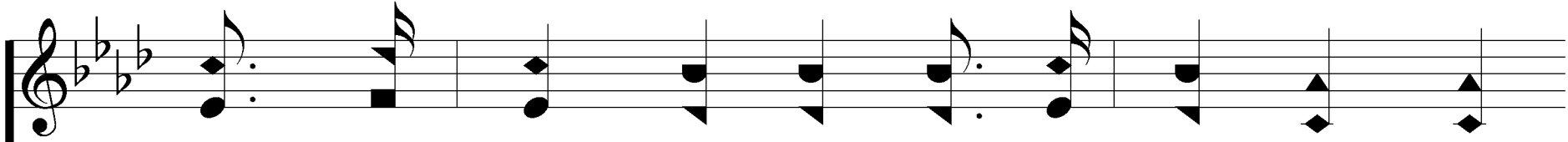


Till I cross the nar - row sea;

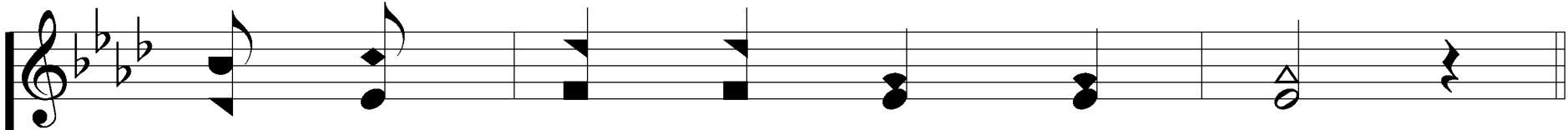
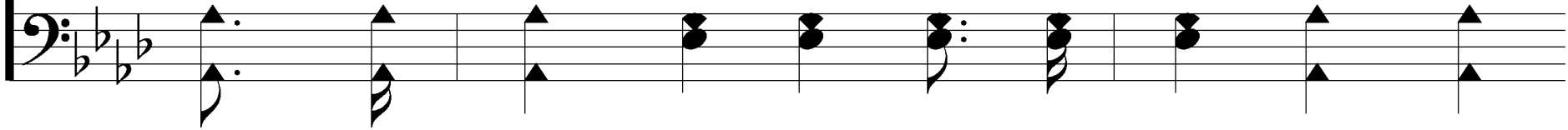


I Am Thine, O Lord

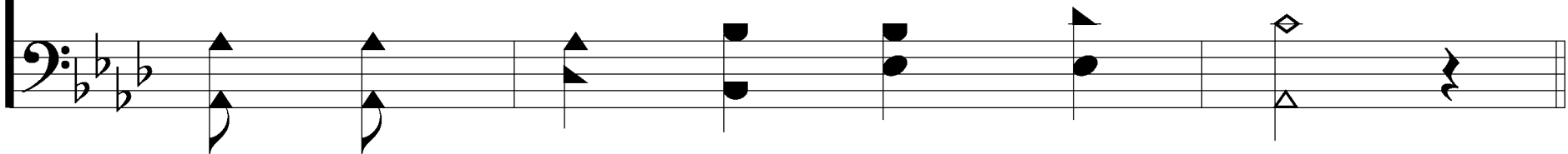
203



There are heights of joy that I may not reach



Till I rest in peace with Thee.



I Am Thine, O Lord

203

REFRAIN



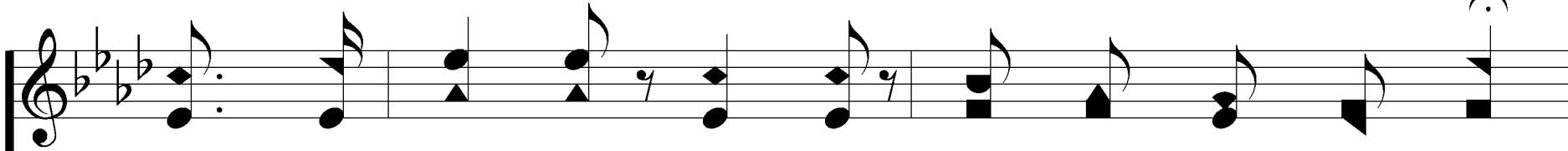
Draw me near - er, near-er, bless-ed Lord,
near-er, near-er,



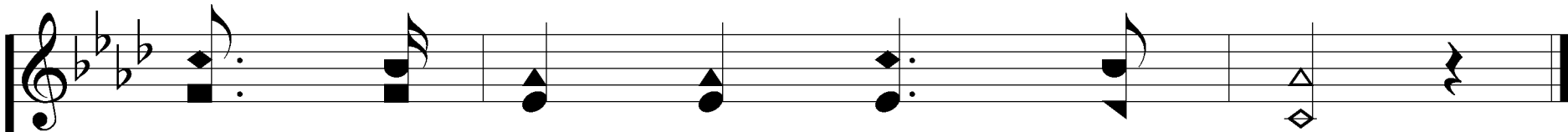
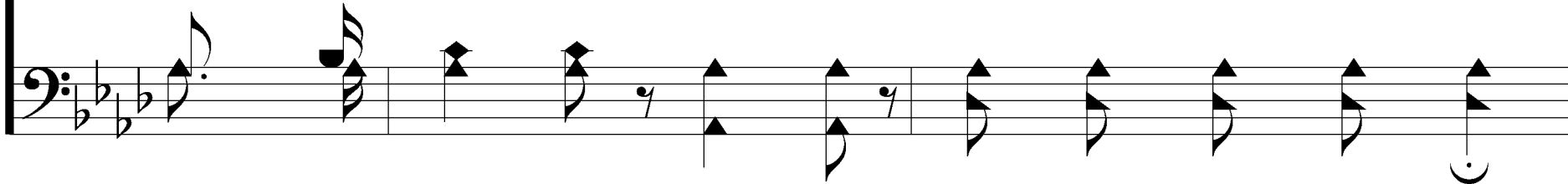
To the cross where Thou hast died;

I Am Thine, O Lord

203



Draw me near-er, near-er, near-er, bless-ed Lord,



To Thy pre - cious, bleed - ing side.

