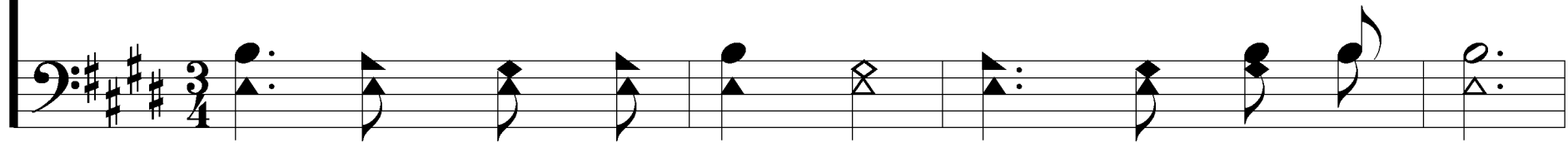
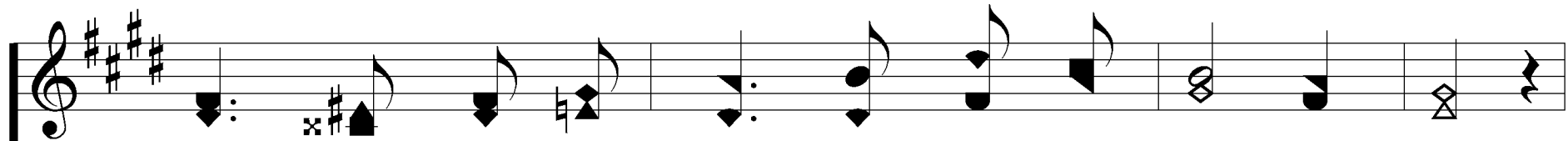


Musical notation for the first line of the song, treble clef, 3/4 time, key of D major. The melody consists of the following notes: G4 (quarter), A4 (quarter), B4 (quarter), C5 (quarter), B4 (quarter), A4 (quarter), G4 (quarter), F#4 (quarter), E4 (quarter), D4 (quarter), C4 (quarter), B3 (quarter), A3 (quarter), G3 (quarter), F#3 (quarter), E3 (quarter), D3 (quarter).

1. Je-sus, Rose of Shar-on, bloom with-in my heart;



Musical notation for the first line of the song, bass clef, 3/4 time, key of D major. The bass line consists of the following notes: G3 (quarter), F#3 (quarter), E3 (quarter), D3 (quarter), C3 (quarter), B2 (quarter), A2 (quarter), G2 (quarter), F#2 (quarter), E2 (quarter), D2 (quarter), C2 (quarter), B1 (quarter), A1 (quarter), G1 (quarter), F#1 (quarter), E1 (quarter), D1 (quarter).

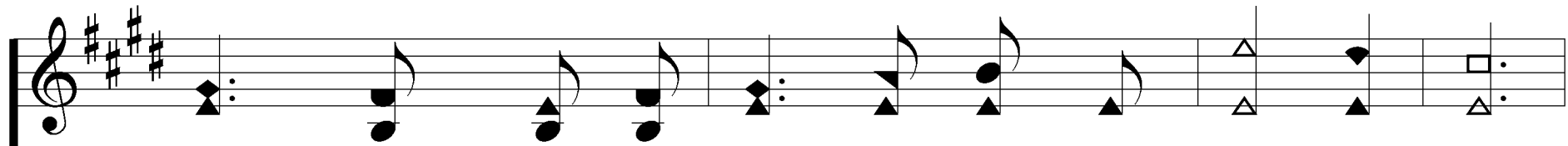


Musical notation for the second line of the song, treble clef, 3/4 time, key of D major. The melody consists of the following notes: G4 (quarter), A4 (quarter), B4 (quarter), C5 (quarter), B4 (quarter), A4 (quarter), G4 (quarter), F#4 (quarter), E4 (quarter), D4 (quarter), C4 (quarter), B3 (quarter), A3 (quarter), G3 (quarter), F#3 (quarter), E3 (quarter), D3 (quarter).

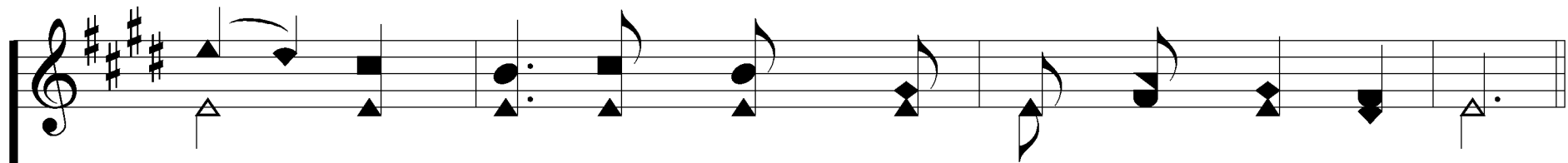
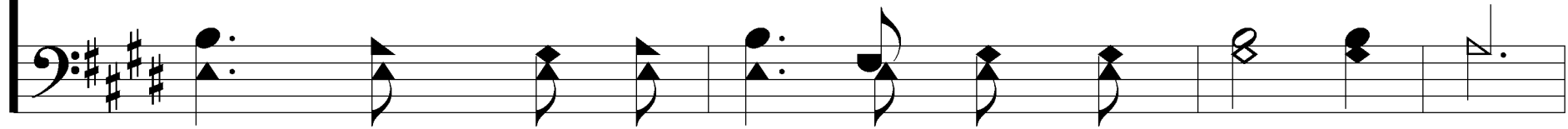
Beau-ties of Thy truth and ho-li-ness im-part,



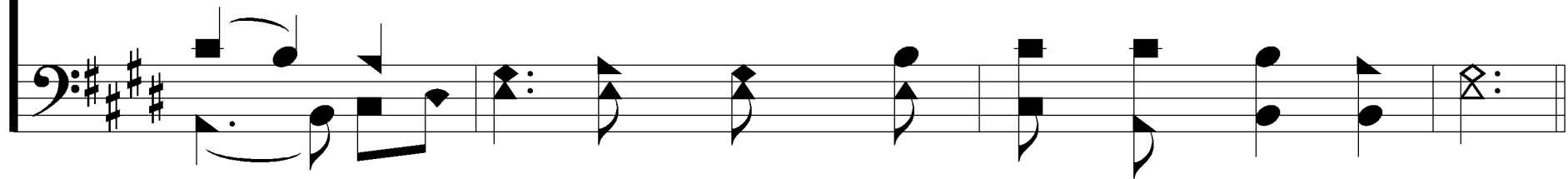
Musical notation for the second line of the song, bass clef, 3/4 time, key of D major. The bass line consists of the following notes: G3 (quarter), F#3 (quarter), E3 (quarter), D3 (quarter), C3 (quarter), B2 (quarter), A2 (quarter), G2 (quarter), F#2 (quarter), E2 (quarter), D2 (quarter), C2 (quarter), B1 (quarter), A1 (quarter), G1 (quarter), F#1 (quarter), E1 (quarter), D1 (quarter).



That where-e'er I go my life may shed a-broad



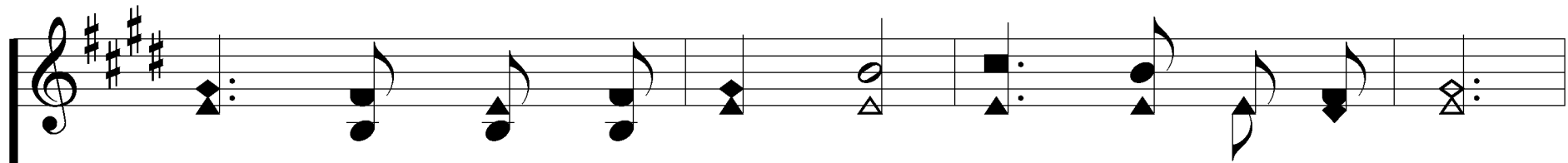
Fra-grance of the knowl-edge of the love of God.



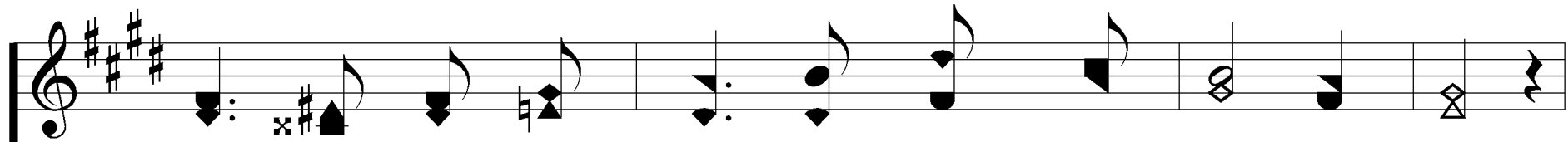
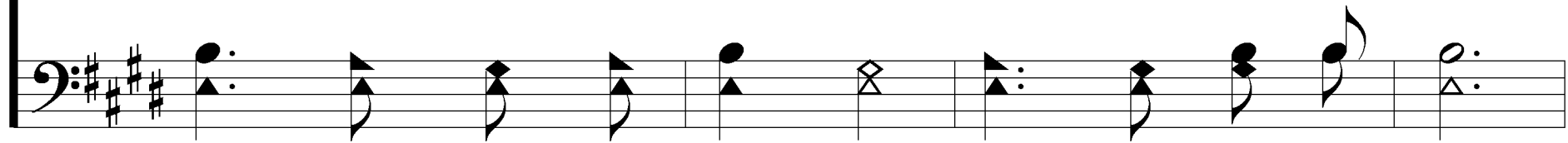
Chorus

Je-sus, Rose of Shar-on,
Bless-ed Je - sus, Rose of Shar-on

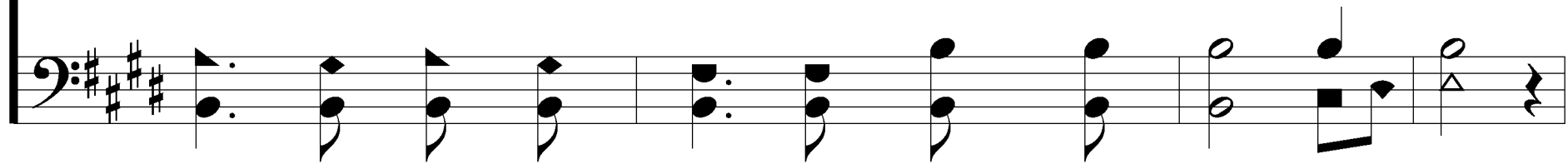
Bloom in ra-diance and in love with-in my heart.

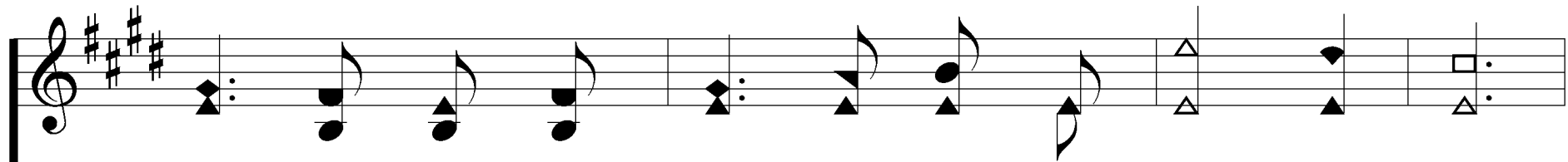


2. Je - sus, Rose of Shar - on, sweet - er far to see

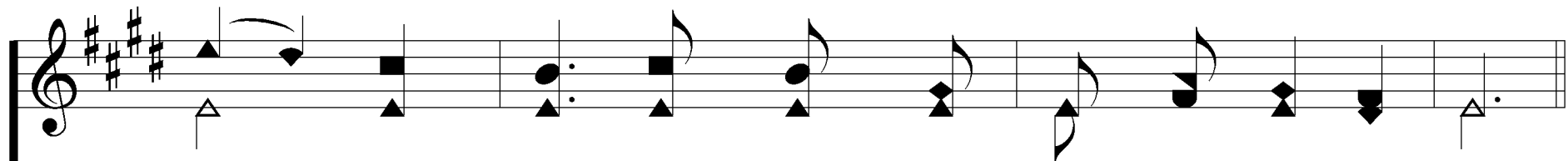
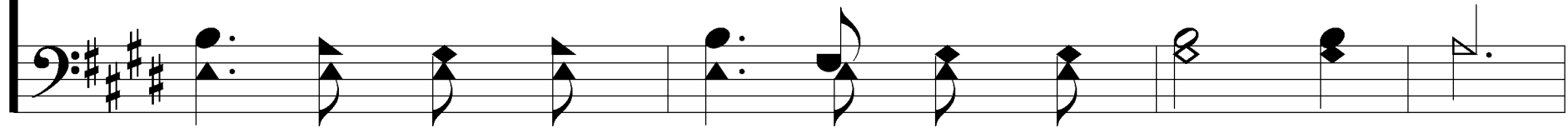


Than the fair - est flow'rs of earth could ev - er be,

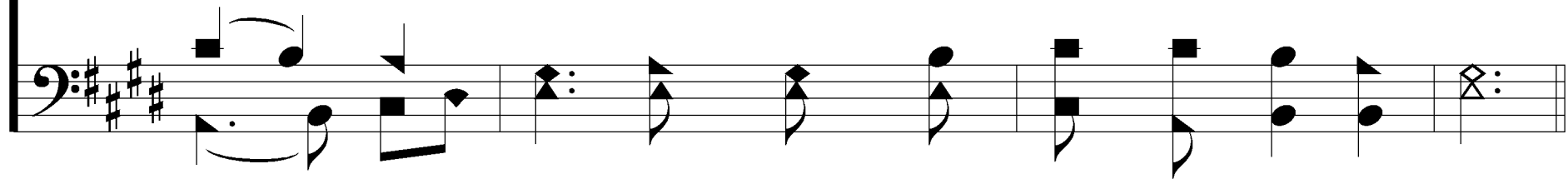




Fill my life com-plete-ly, add-ing more each day



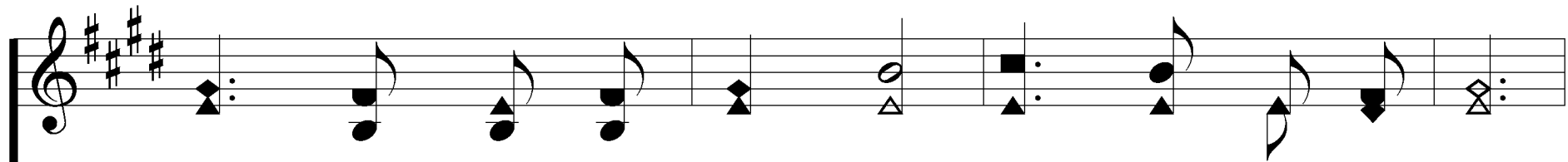
Of Thy Grace di-vine and pu-ri-ty, I pray.



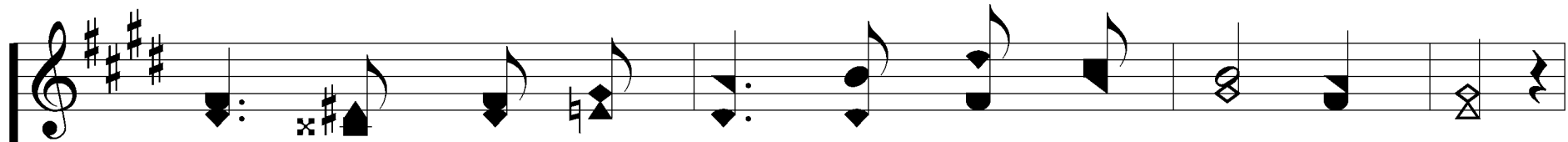
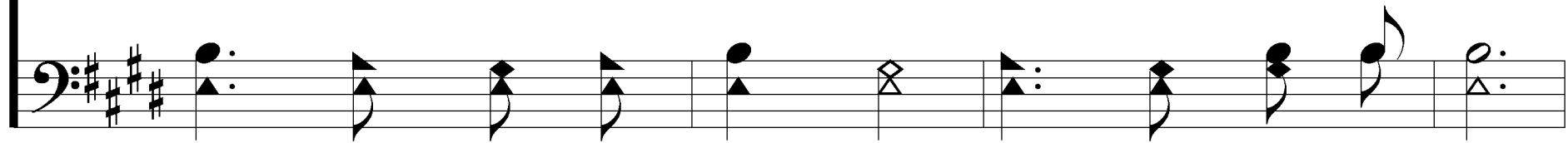
Chorus

Je-sus, Rose of Shar-on,
Bless-ed Je - sus, Rose of Shar-on

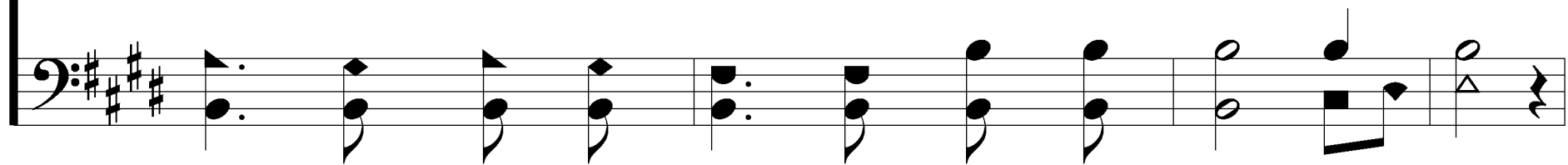
Bloom in ra-diance and in love with-in my heart.

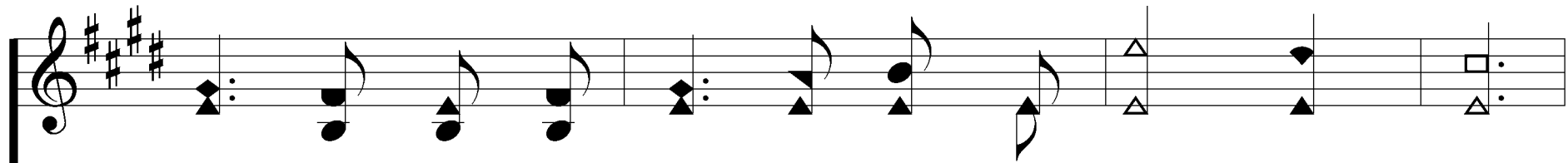


3. Je - sus, Rose of Shar - on, balm for ev - 'ry ill,

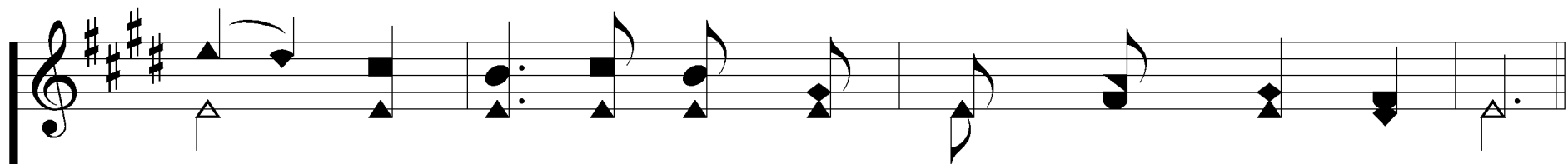


May Thy ten - der mer - cy's heal - ing pow'r dis - til

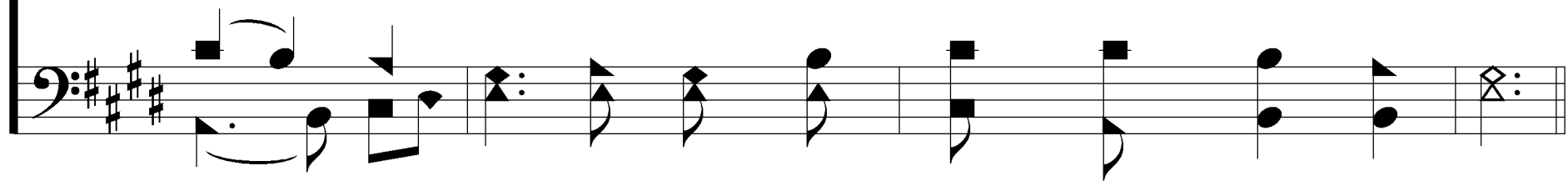




For af - flict - ed souls of wea - ry, bur - dened men,



Giv - ing need - y mor - tals health and hope a - gain.



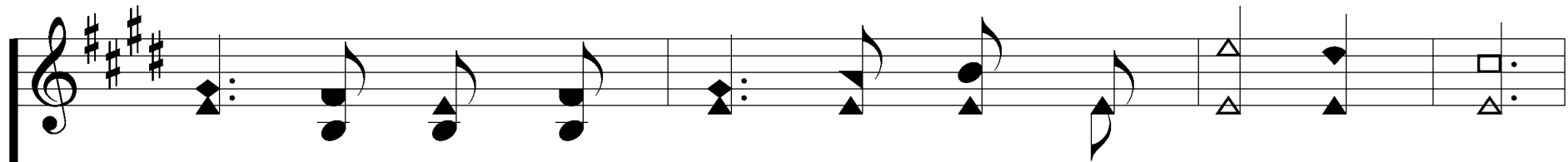
Chorus

Je-sus, Rose of Shar-on,
Bless-ed Je - sus, Rose of Shar-on

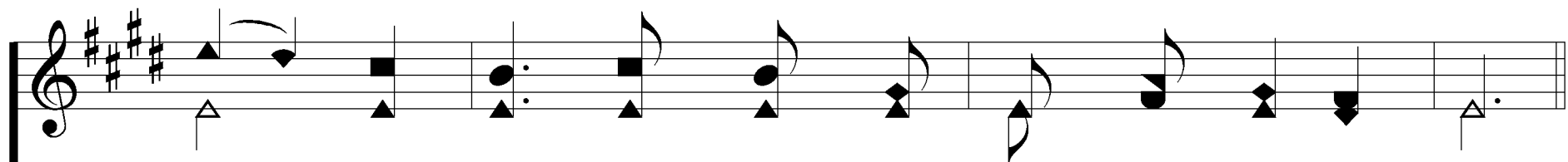
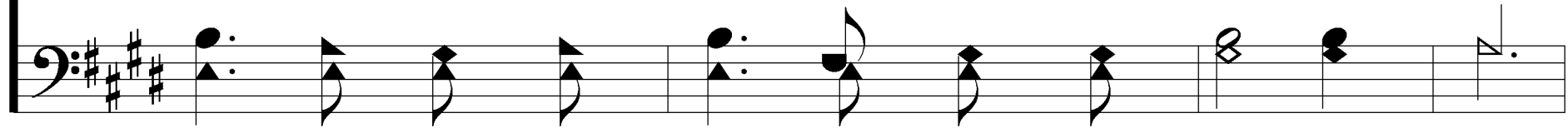
Bloom in ra-diance and in love with-in my heart.

4. Je-sus, Rose of Shar-on, bloom for - ev - er-more,

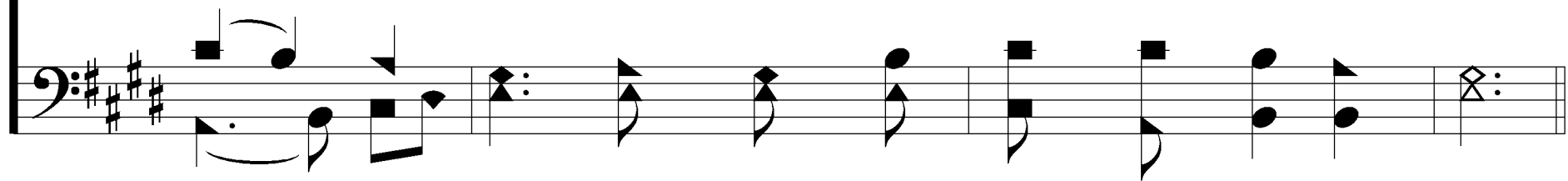
Be Thy glo-ry seen on earth from shore to shore,



Till the na-tions own Thy sov-'reign-ty com-plete.



Lay their hon - ors down and wor - ship at Thy feet.



Chorus

Je-sus, Rose of Shar-on,
Bless-ed Je - sus, Rose of Shar-on

Bloom in ra-diance and in love with-in my heart.