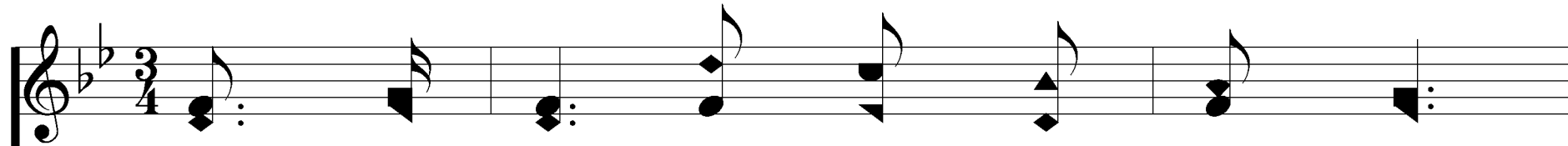
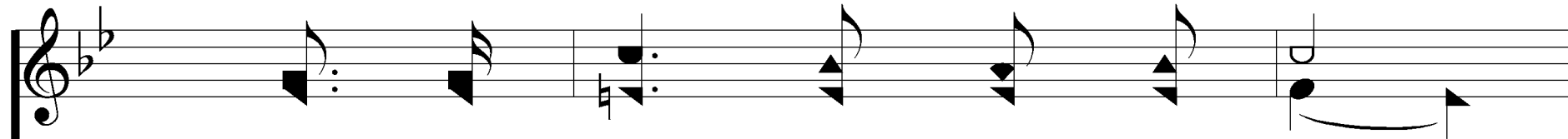
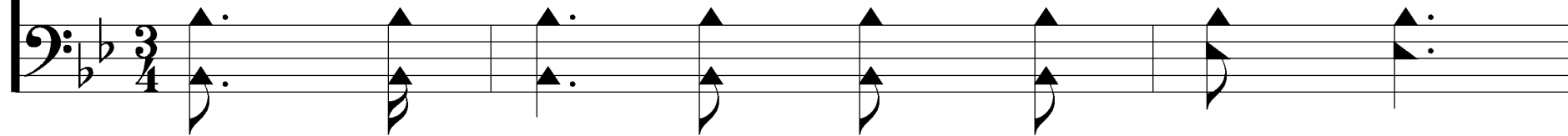


# Let the Lower Lights Be Burning

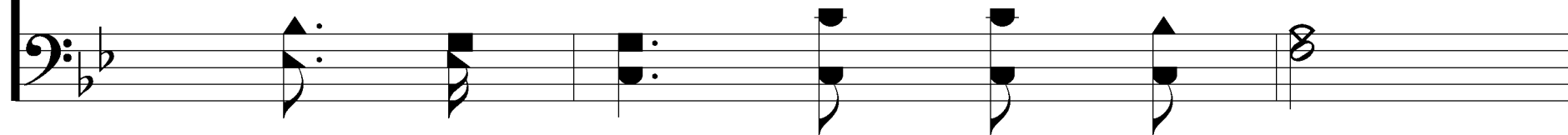
312



1. Bright - ly beams our Fa - ther's mer - cy



From His light - house ev - er - more,



*Mt. 5:16; Phil. 2:15-16*

Words & Music: Philip P. Bliss

Presentation © 2006 Taylor Publications

# Let the Lower Lights Be Burning

312

The image shows a musical score for the hymn 'Let the Lower Lights Be Burning'. It consists of four staves. The top two staves are for the vocal line, with a treble clef on the first and a bass clef on the second. The bottom two staves are for the piano accompaniment, with a treble clef on the third and a bass clef on the fourth. The key signature is B-flat major (two flats), and the time signature is 4/4. The lyrics are: 'But to us He gives the keep - ing Of the lights a - long the shore.' The lyrics are placed between the vocal and piano staves.

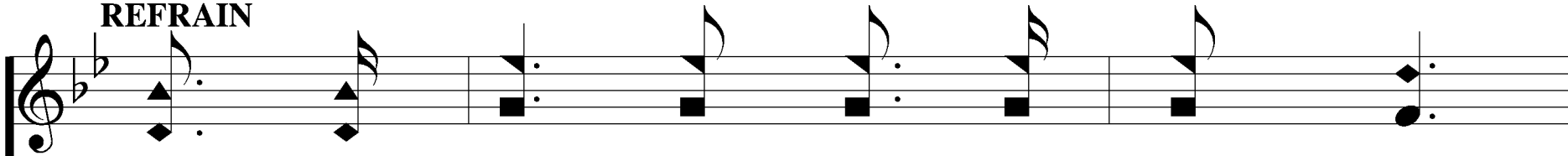
But to us He gives the

keep - ing Of the lights a - long the shore.

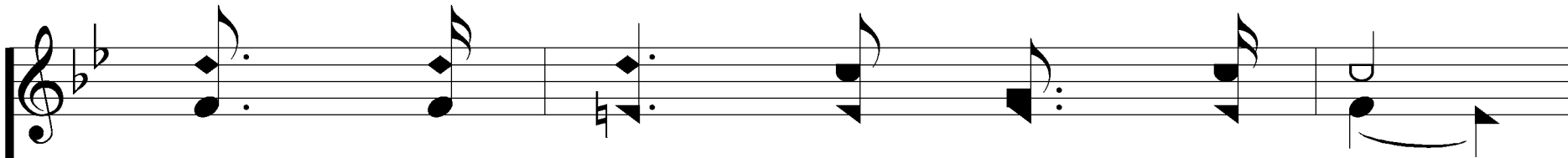
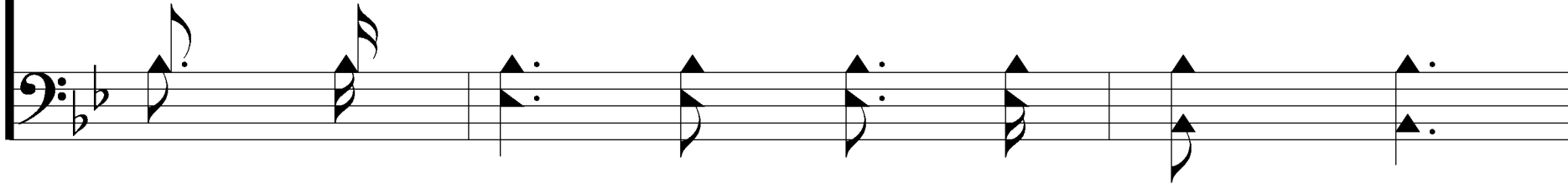
# Let the Lower Lights Be Burning

312

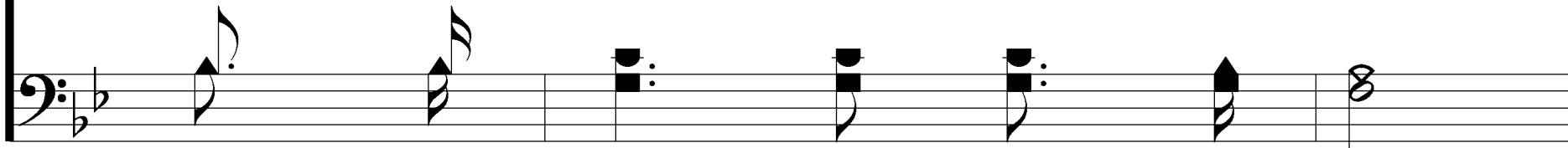
## REFRAIN



Let the low - er lights be burn - ing!

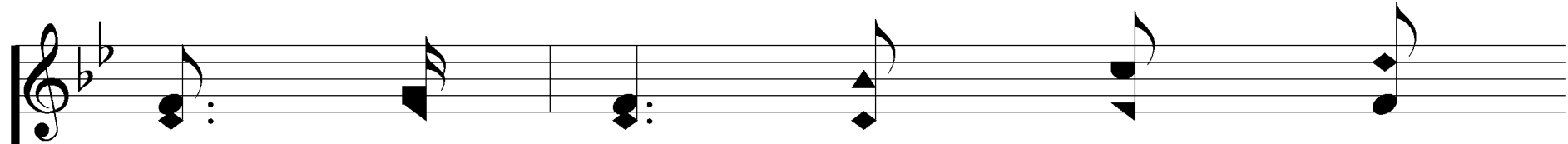


Send a gleam a - cross the wave!

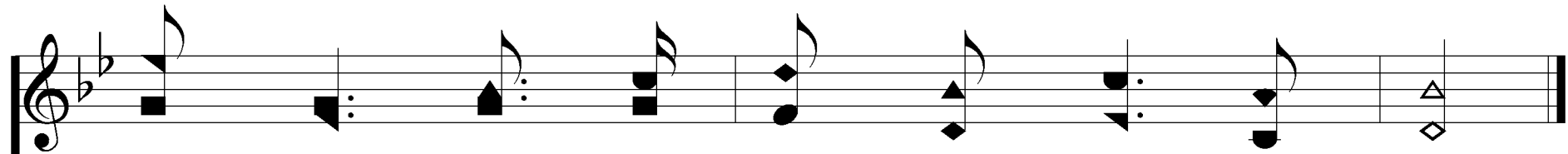


# Let the Lower Lights Be Burning

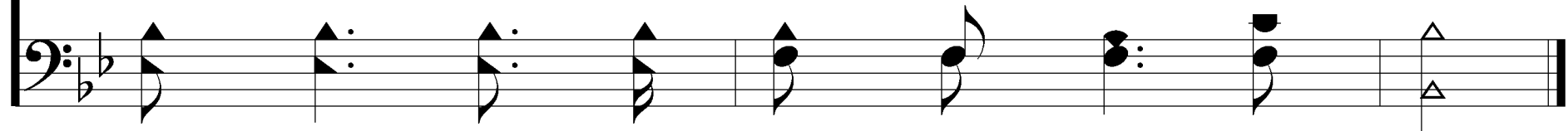
312



Some poor faint - ing, strug - 'ling



sea - man You may res - cue, you may save.



# Let the Lower Lights Be Burning

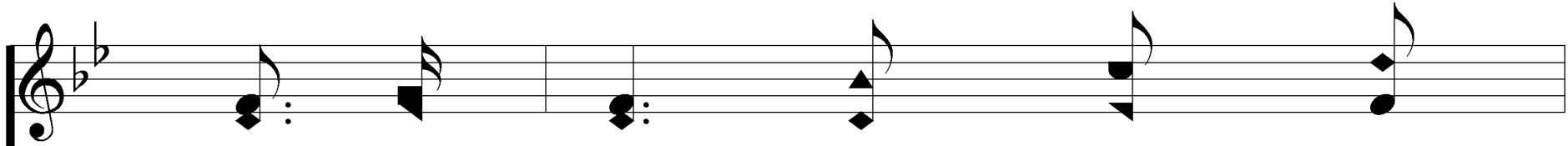
312

2. Dark the night of sin has set - tled,

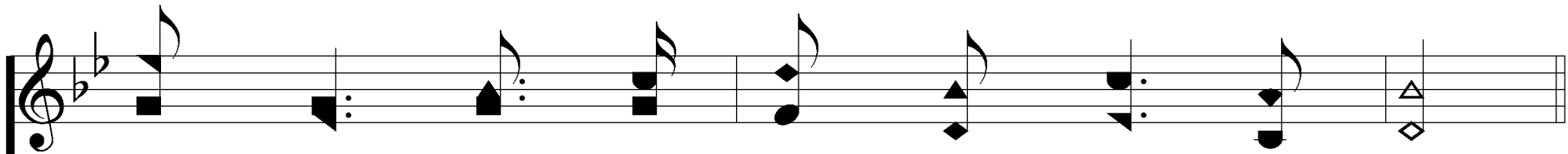
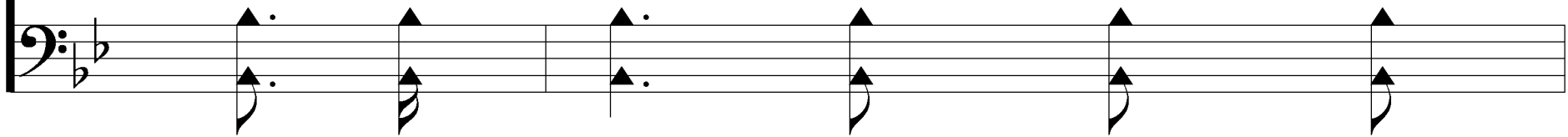
Loud the an - gry bil - lows roar;

# Let the Lower Lights Be Burning

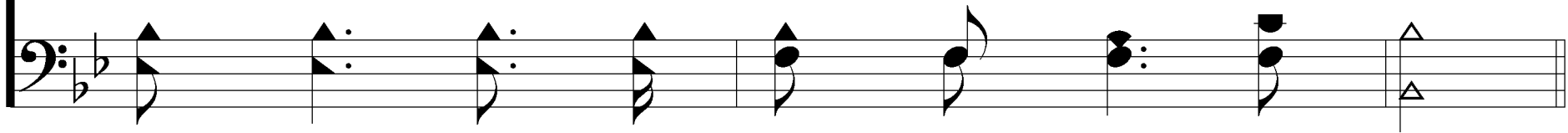
312



Ea - ger eyes are watch - ing,



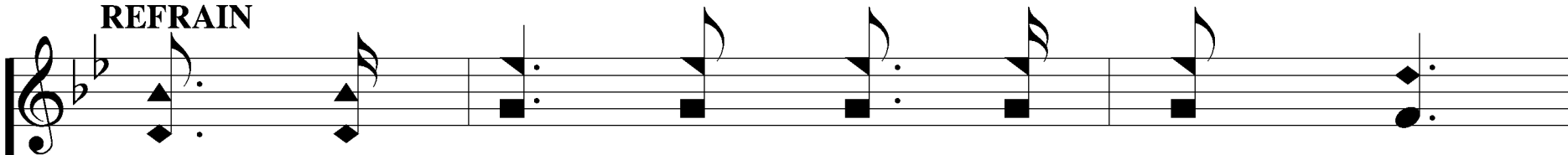
long - ing, For the lights a - long the shore.



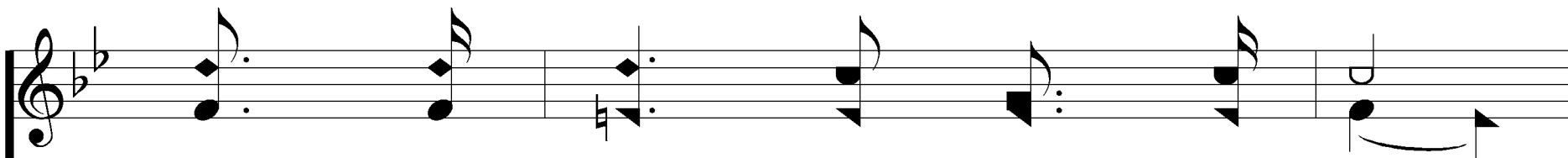
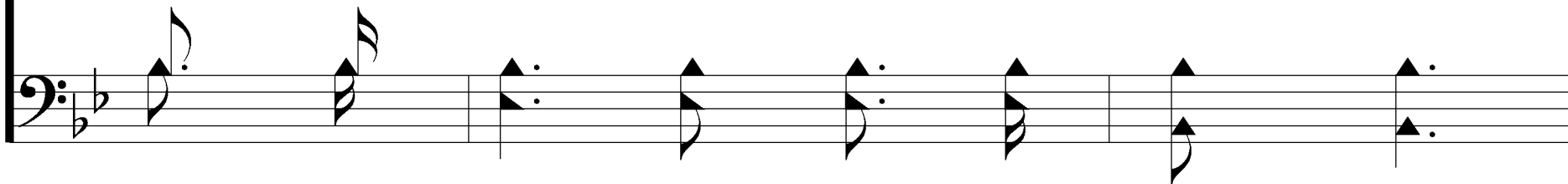
# Let the Lower Lights Be Burning

312

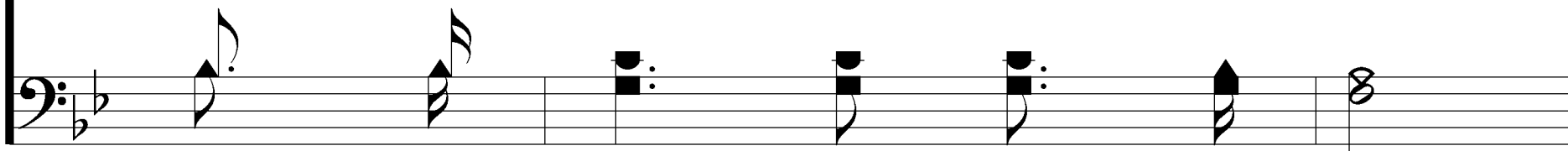
## REFRAIN



Let the low - er lights be burn - ing!

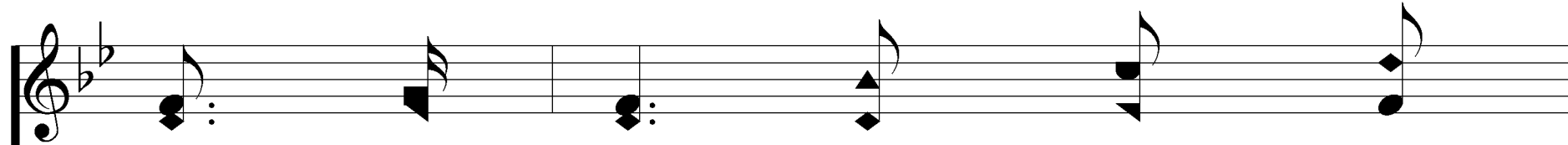


Send a gleam a - cross the wave!

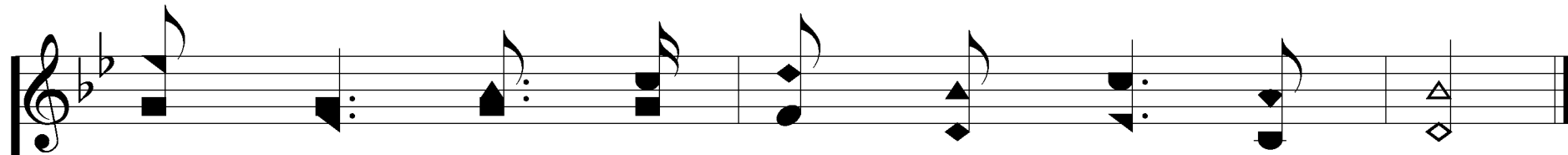
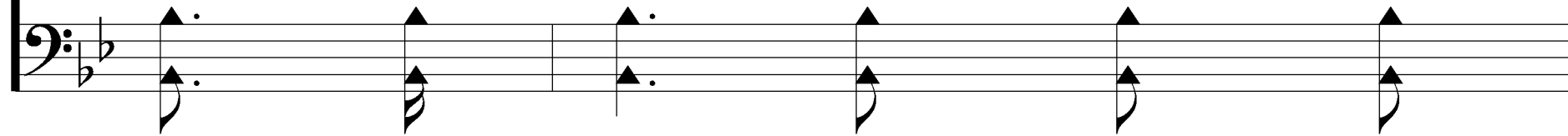


# Let the Lower Lights Be Burning

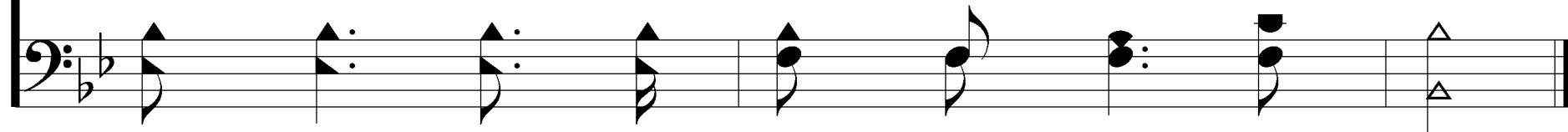
312



Some poor faint - ing, strug - 'ling



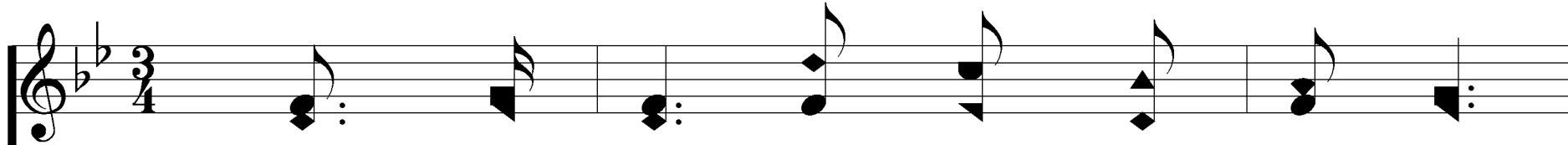
sea - man You may res - cue, you may save.



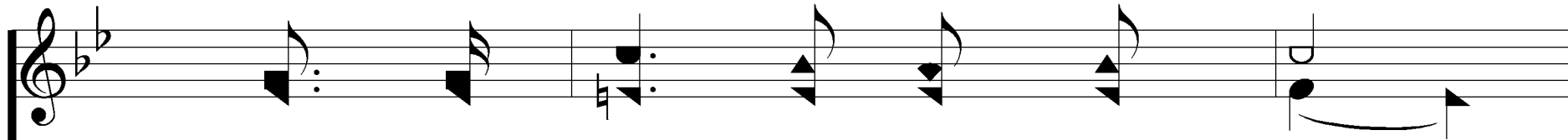
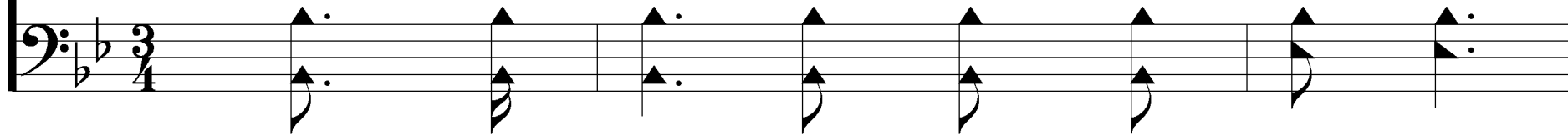


# Let the Lower Lights Be Burning

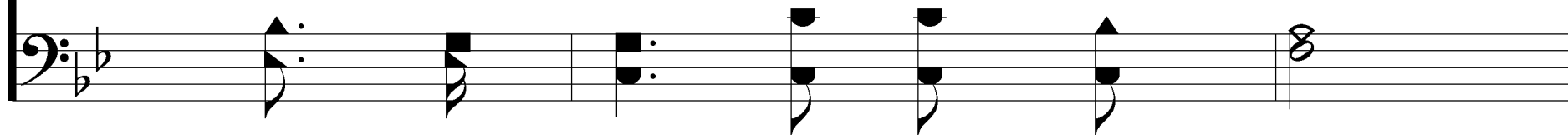
312



3. Trim your fee - ble lamp, my broth - er!



Some poor sail - or tem - pest - tossed,



# Let the Lower Lights Be Burning

312

The image displays a musical score for the hymn 'Let the Lower Lights Be Burning'. It consists of four staves. The first two staves are for the vocal line, with a treble clef on the first and a bass clef on the second. The last two staves are for the piano accompaniment, with a treble clef on the third and a bass clef on the fourth. The key signature is B-flat major (two flats), and the time signature is 4/4. The lyrics are: 'Try - ing now to make the har - bor, In the dark - ness may be lost.'

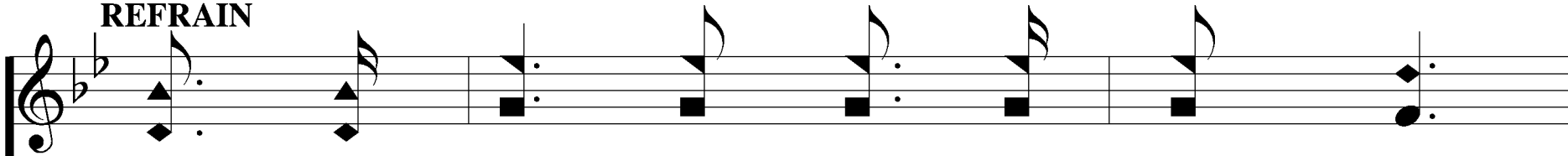
Try - ing now to make the

har - bor, In the dark - ness may be lost.

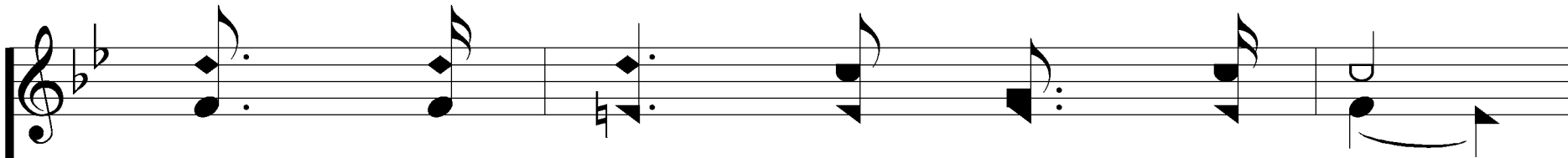
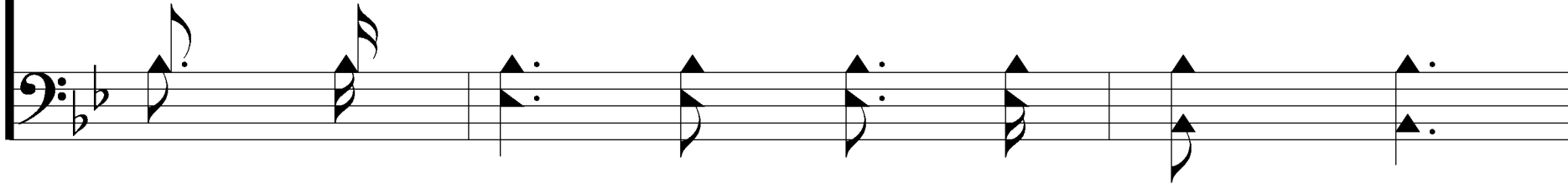
# Let the Lower Lights Be Burning

312

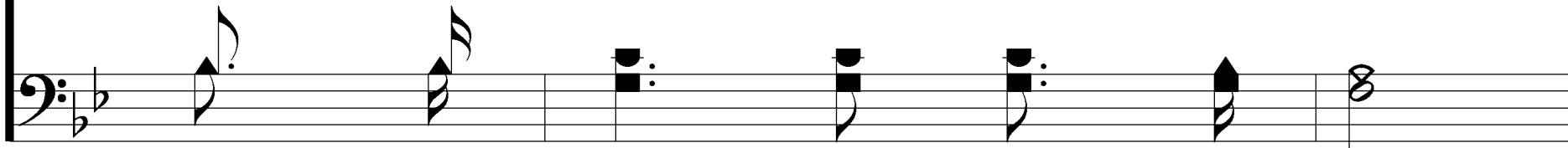
## REFRAIN



Let the low - er lights be burn - ing!

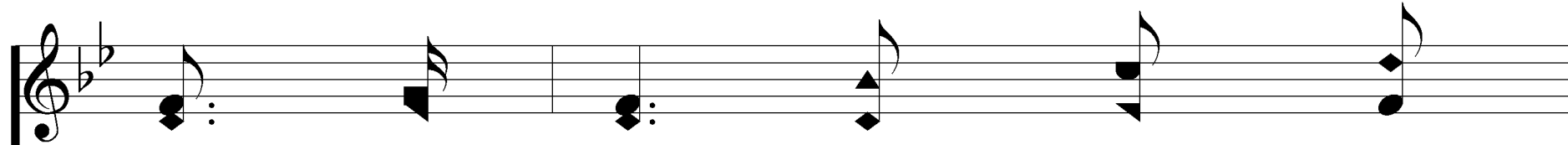


Send a gleam a - cross the wave!

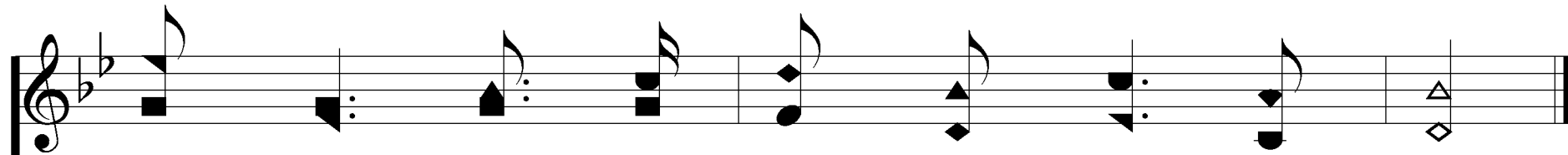
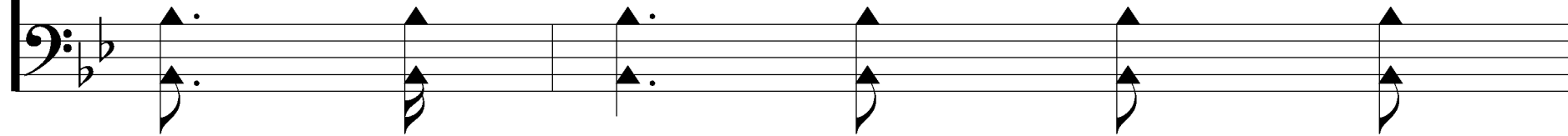


# Let the Lower Lights Be Burning

312



Some poor faint - ing, strug - 'ling



sea - man You may res - cue, you may save.

