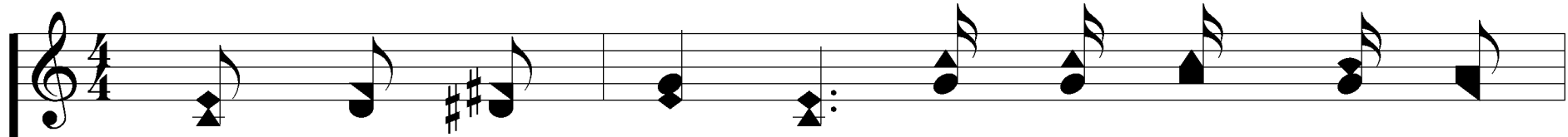
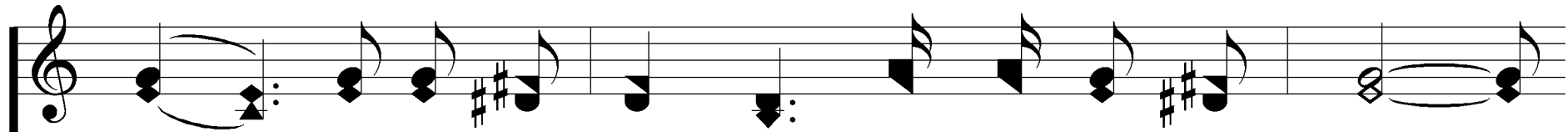
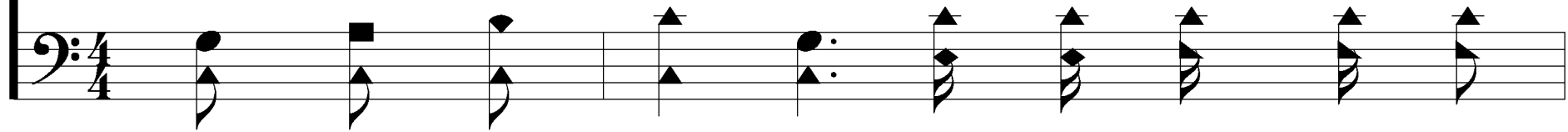


Mansion Over the Hilltop

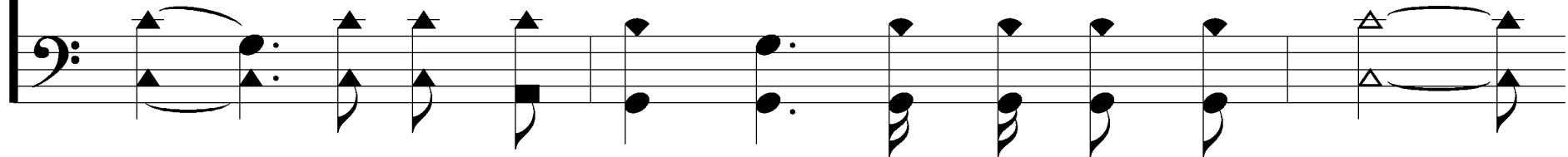
350



1. I'm sat - is - fied with just a cot - tage be -



low, A lit - tle sil - ver and a lit - tle gold;



John 14:2

Words & Music: Ira F. Stanphill, 1949

© Copyright 1949 by Singpiration.
All Rights Reserved. Used by Permission.

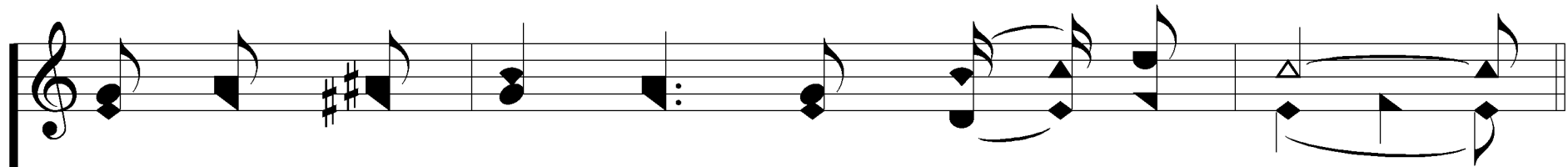
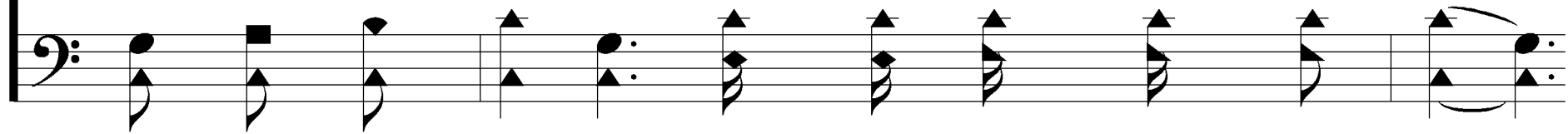
Presentation © 2006 Taylor Publications

Mansion Over the Hilltop

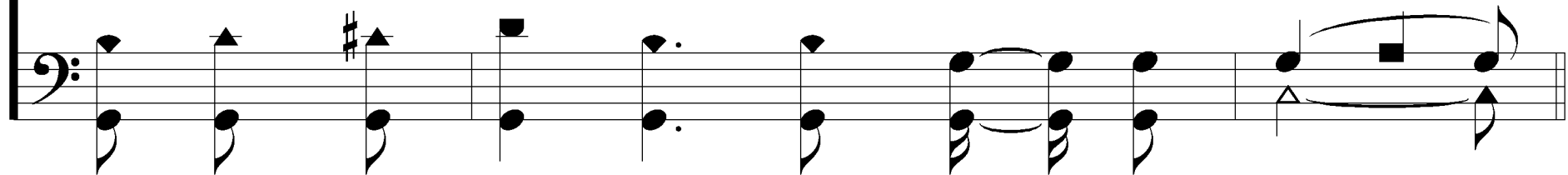
350



But in that cit - y where the ran - somed will shine,



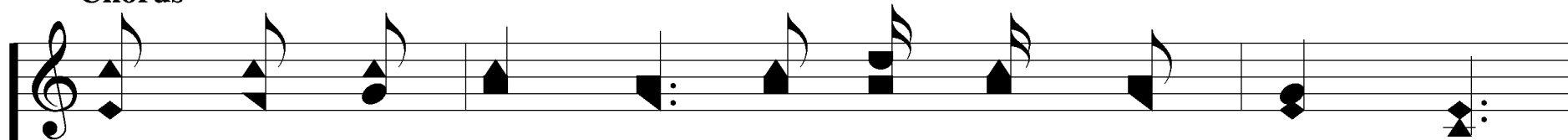
I want a gold one that's sil - ver lined.



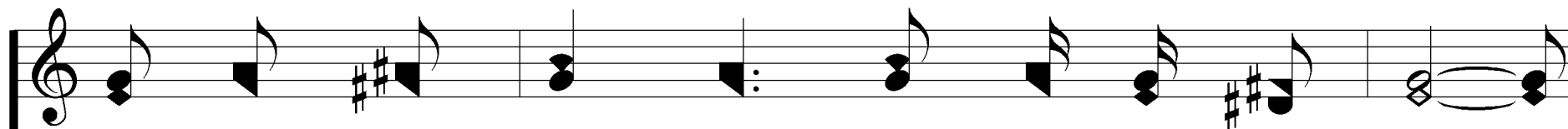
Mansion Over the Hilltop

350

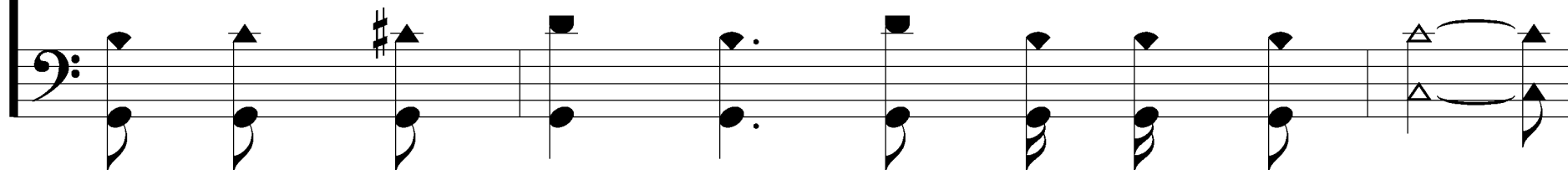
Chorus



I've got a man-sion just o-ver the hill-top,

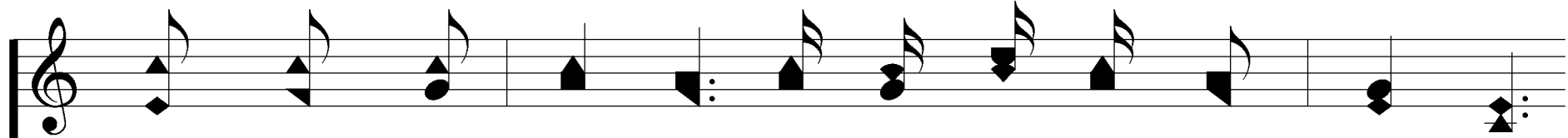


in that bright land where we'll nev-er grow old;

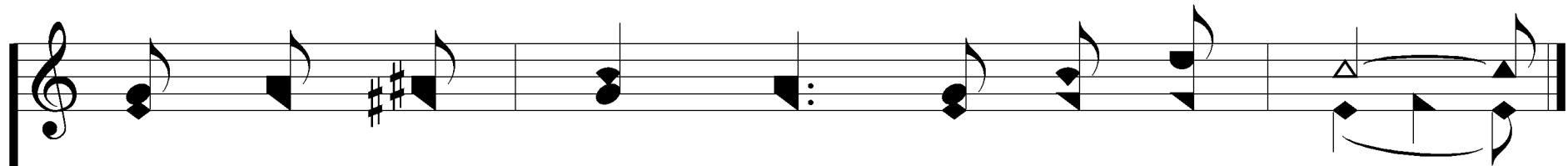


Mansion Over the Hilltop

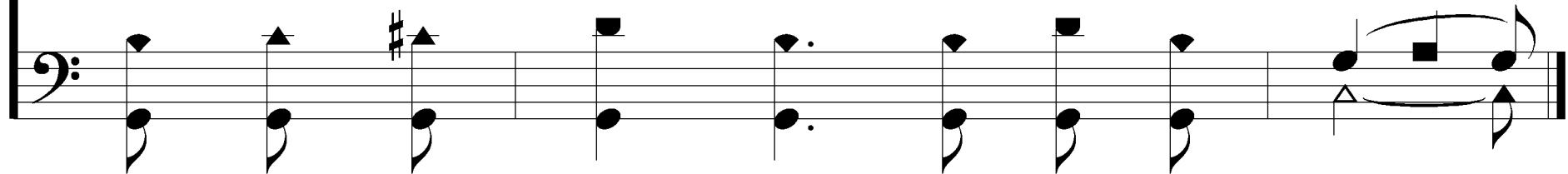
350

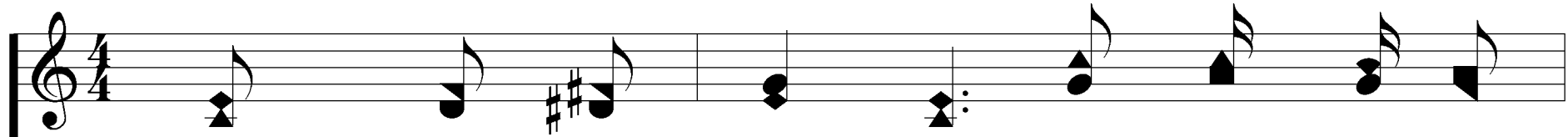


And some day yon-der we will nev-er more wan-der



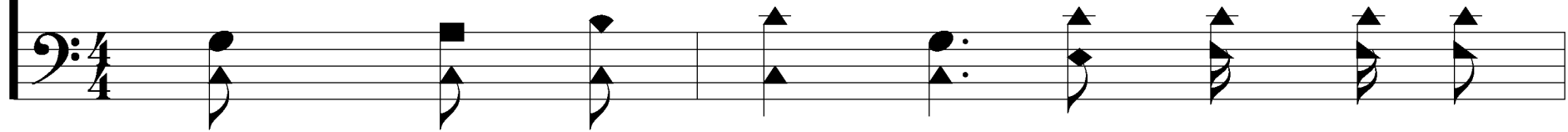
but walk the streets that are pur-est gold.



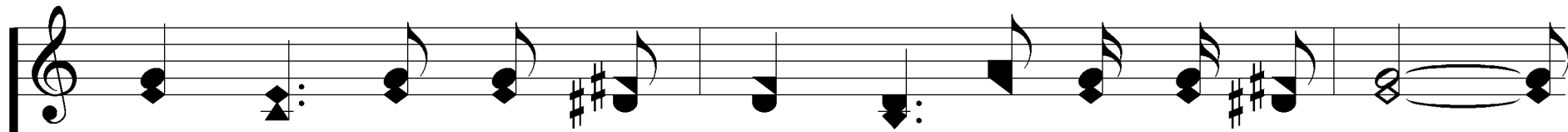


Musical notation for the first system, treble clef, 4/4 time signature. The melody consists of the following notes: G4 (quarter), A4 (quarter), B4 (quarter), C#5 (quarter), B4 (quarter), A4 (quarter), G4 (quarter), F#4 (quarter), E4 (quarter), D4 (quarter).

2. Though oft - en temp - ted tor - ment - ed and

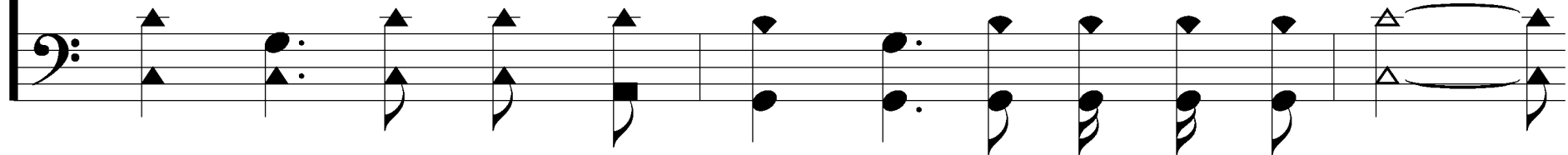


Musical notation for the first system, bass clef, 4/4 time signature. The accompaniment consists of the following notes: G3 (quarter), F#3 (quarter), E3 (quarter), D3 (quarter), C3 (quarter), B2 (quarter), A2 (quarter), G2 (quarter), F#2 (quarter), E2 (quarter), D2 (quarter).



Musical notation for the second system, treble clef, 4/4 time signature. The melody consists of the following notes: G4 (quarter), A4 (quarter), B4 (quarter), C#5 (quarter), B4 (quarter), A4 (quarter), G4 (quarter), F#4 (quarter), E4 (quarter), D4 (quarter), C#4 (quarter), B3 (quarter), A3 (quarter), G3 (quarter), F#3 (quarter), E3 (quarter), D3 (quarter).

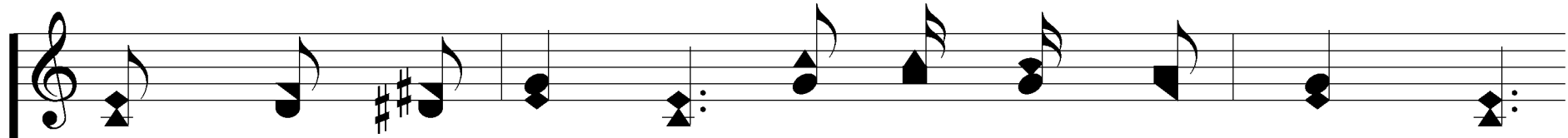
test - ed And like the proph - et my pil - low a stone;



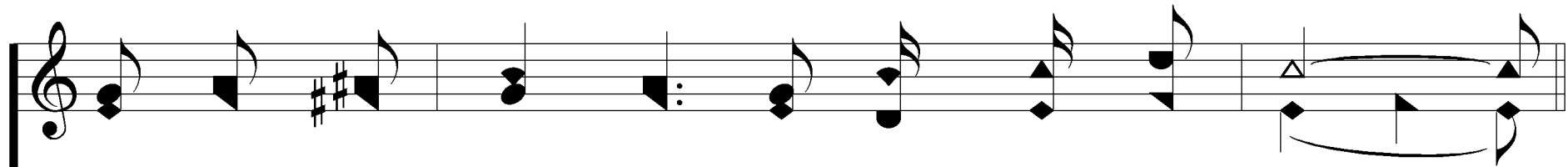
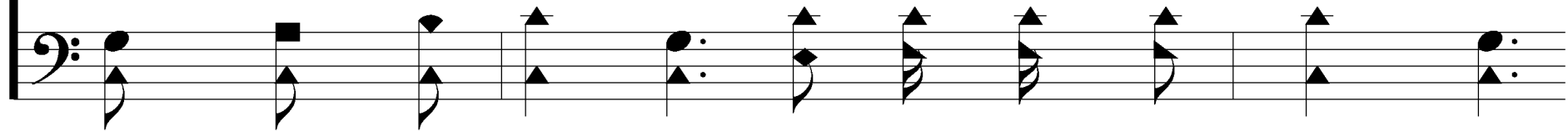
Musical notation for the second system, bass clef, 4/4 time signature. The accompaniment consists of the following notes: G3 (quarter), F#3 (quarter), E3 (quarter), D3 (quarter), C3 (quarter), B2 (quarter), A2 (quarter), G2 (quarter), F#2 (quarter), E2 (quarter), D2 (quarter), C2 (quarter), B1 (quarter), A1 (quarter), G1 (quarter), F#1 (quarter), E1 (quarter), D1 (quarter).

Mansion Over the Hilltop

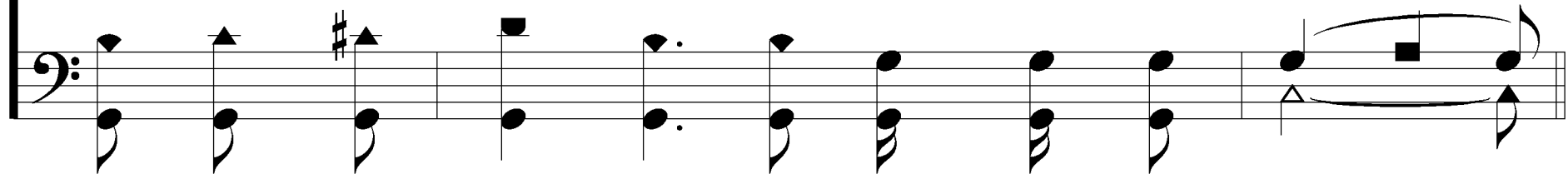
350



And though I find here no per-ma-ment dwell - ing,



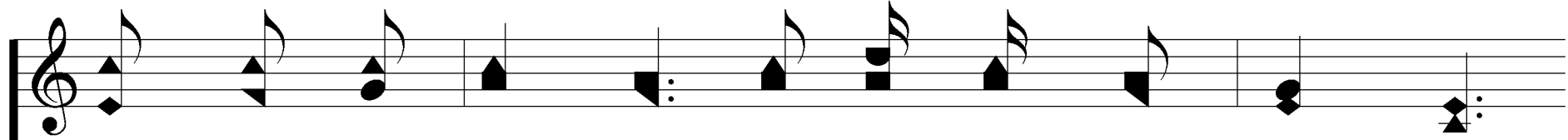
I know He'll give me a man - sion my own.



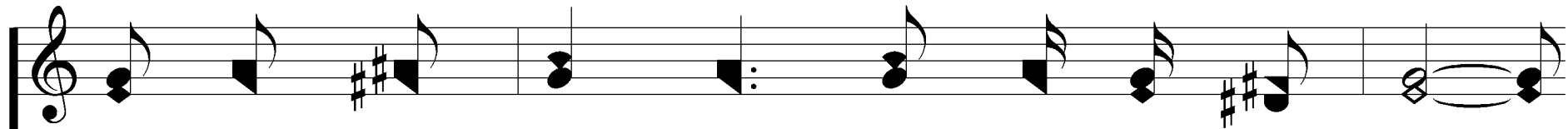
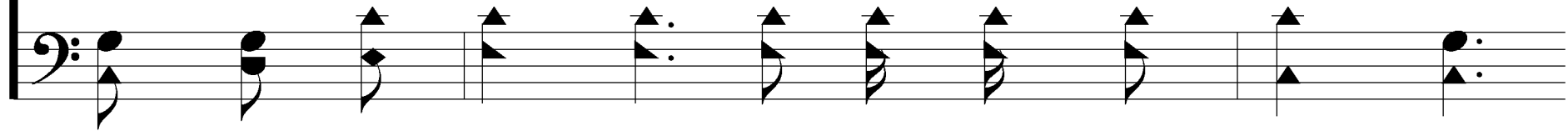
Mansion Over the Hilltop

350

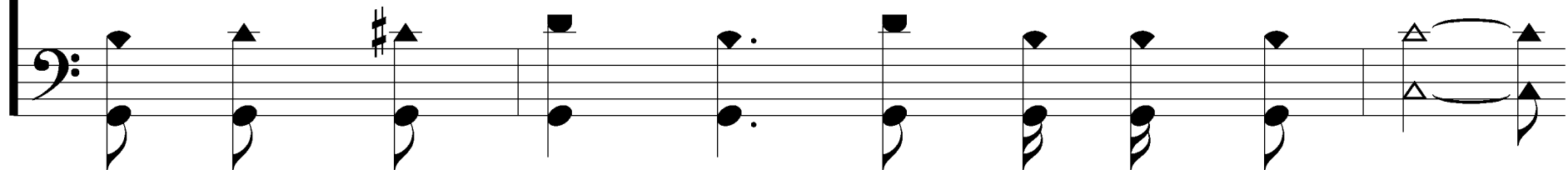
Chorus



I've got a man-sion just o-ver the hill-top,

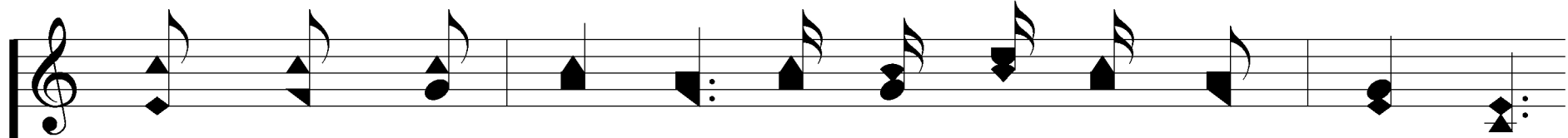


in that bright land where we'll nev-er grow old;

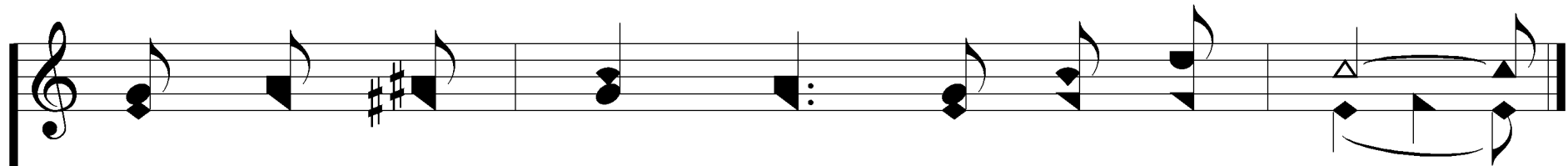


Mansion Over the Hilltop

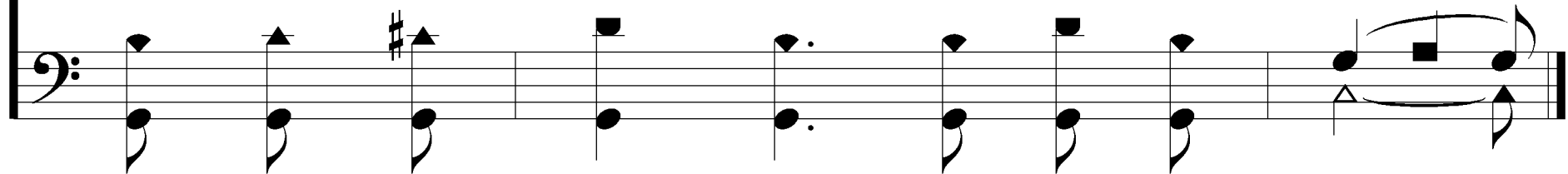
350



And some day yon-der we will nev-er more wan-der

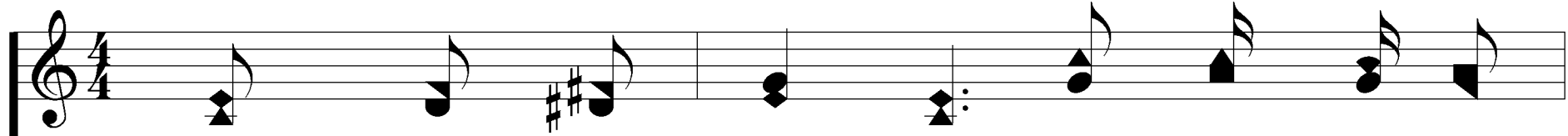


but walk the streets that are pur-est gold.

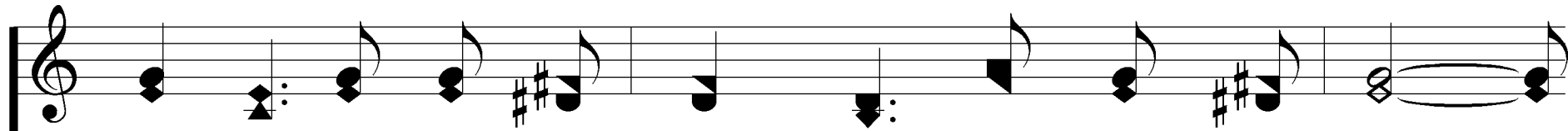
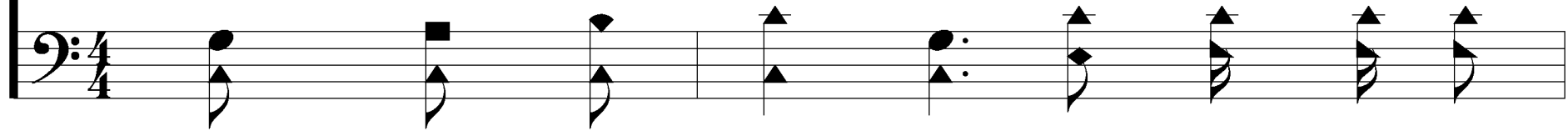


Mansion Over the Hilltop

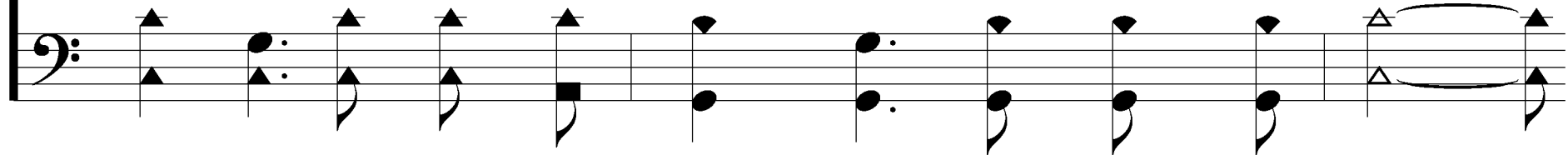
350



3. Don't think me poor or de - sert - ed or

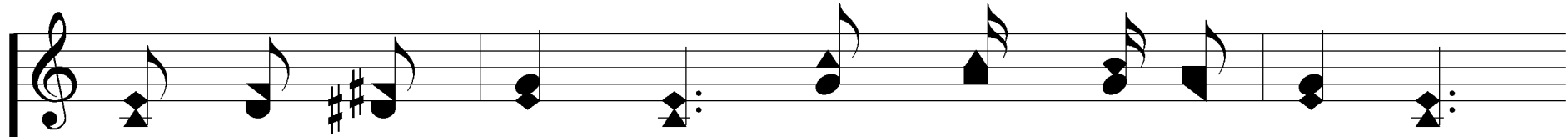


lone-ly, I'm not dis - cour - aged, I'm heav - en bound;

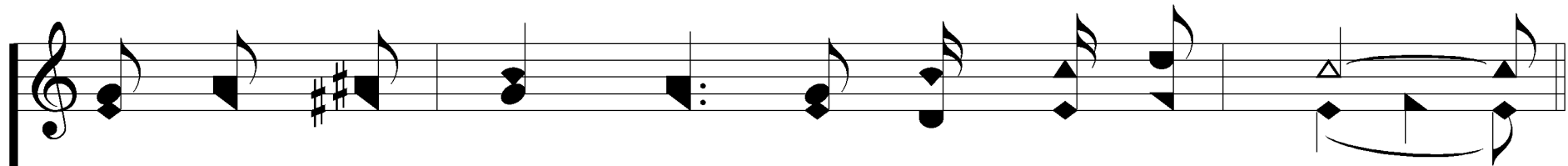
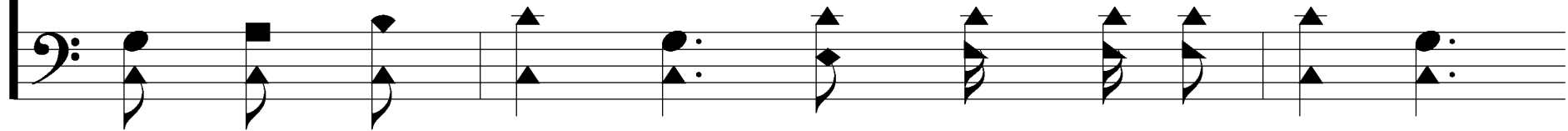


Mansion Over the Hilltop

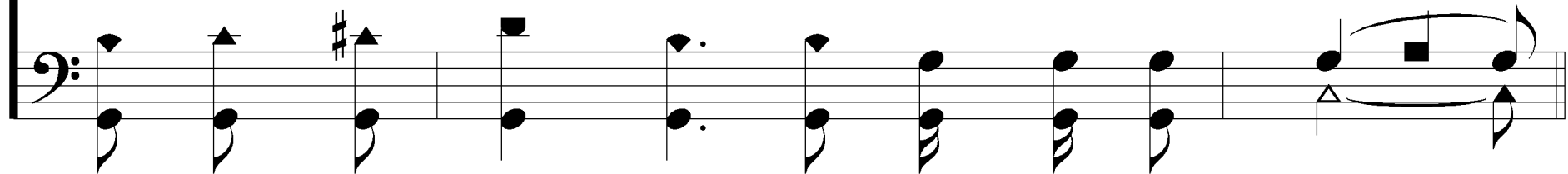
350



I'm just a pil - grim in search of a cit - y,



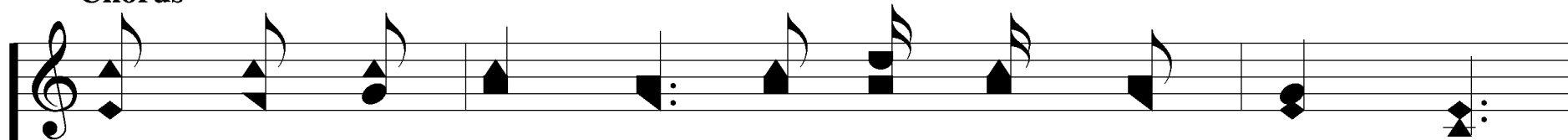
I want a man - sion, a robe and a crown.



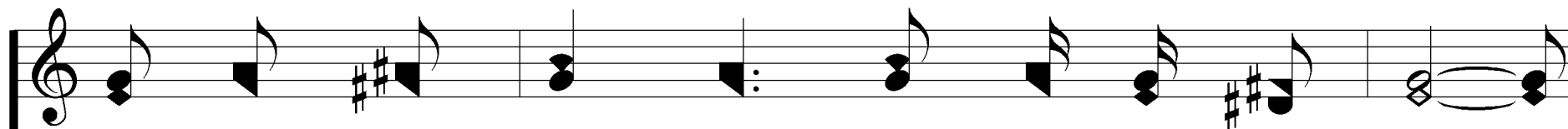
Mansion Over the Hilltop

350

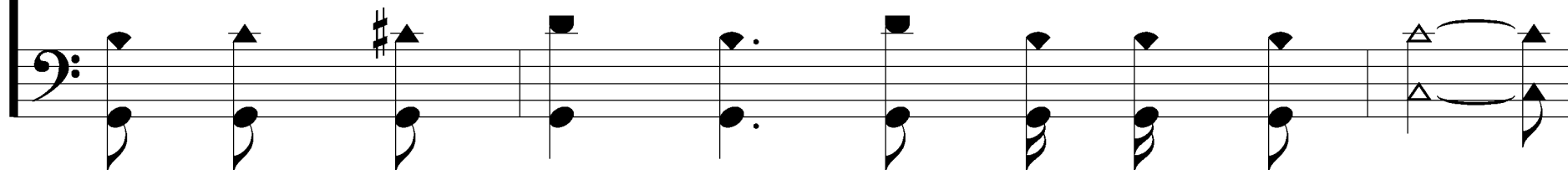
Chorus



I've got a man-sion just o-ver the hill-top,

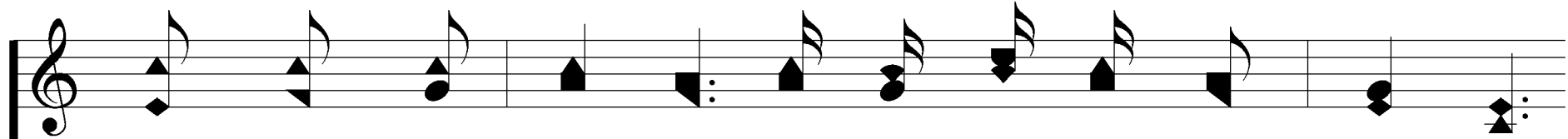


in that bright land where we'll nev-er grow old;

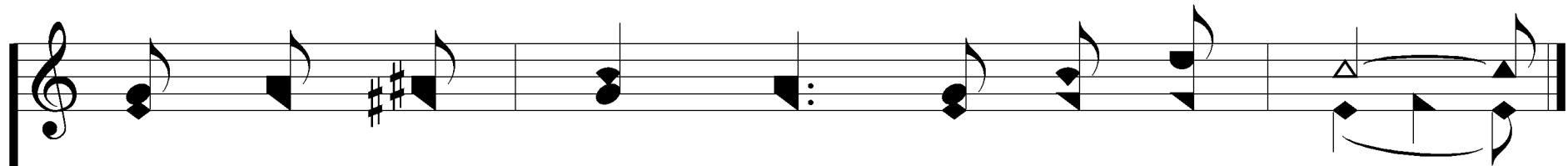


Mansion Over the Hilltop

350



And some day yon-der we will nev-er more wan-der



but walk the streets that are pur-est gold.

