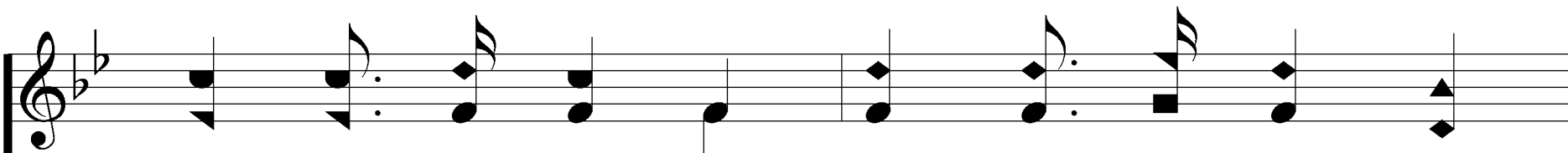
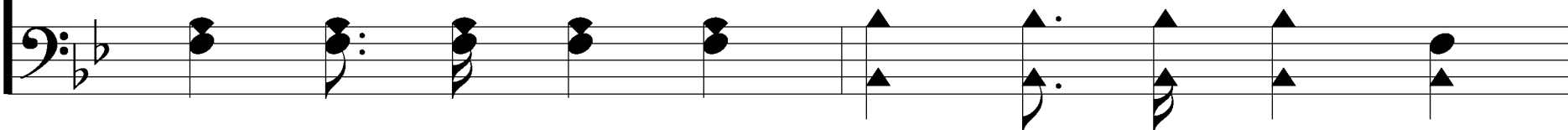
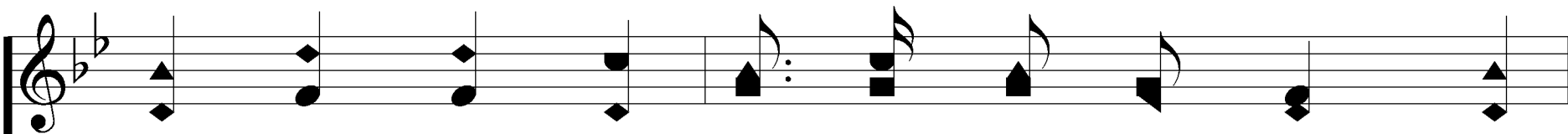


1. Are you wea - ry, are you heav - y heart - ed?

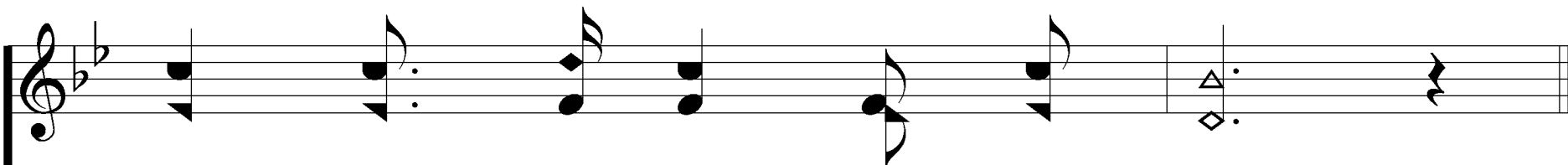


Tell it to Je - sus, Tell it to Je - sus;

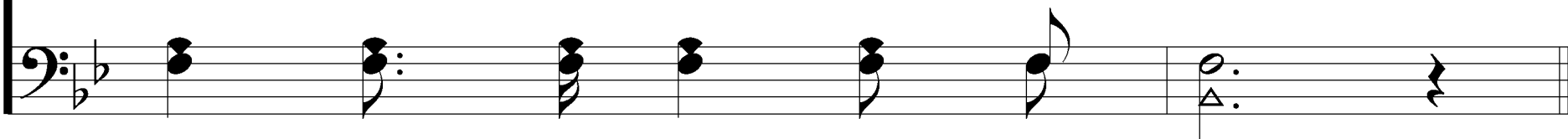




Are you griev - ing o - ver joys de - part - ed?



Tell it to Je - sus a - lone.



Tell It To Jesus Alone

502

REFRAIN

Musical notation for the first staff of the refrain, treble clef, G major, 4/4 time. The melody consists of quarter notes: G4, A4, B4, A4, G4, F#4, E4, D4.

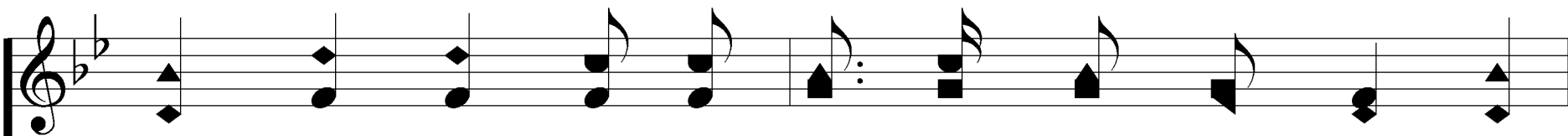
Tell it to Je - sus, Tell it to Je - sus,

Musical notation for the second staff of the refrain, bass clef, G major, 4/4 time. The accompaniment consists of quarter notes: G2, A2, B2, A2, G2, F#2, E2, D2.

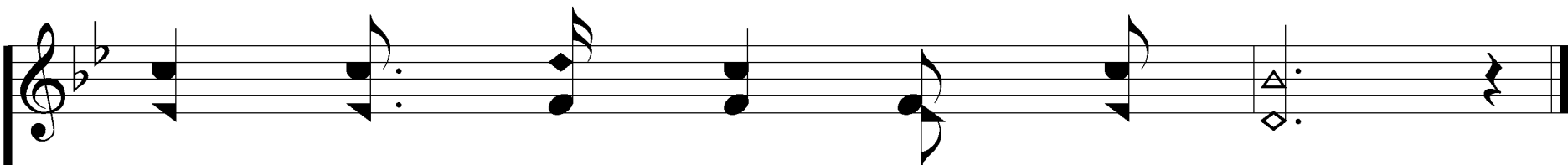
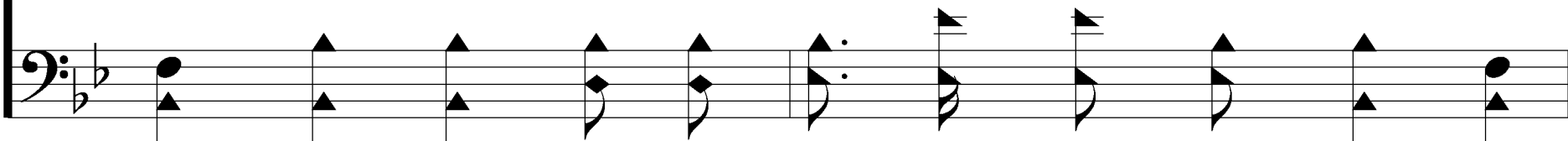
Musical notation for the first staff of the second line, treble clef, G major, 4/4 time. The melody consists of quarter notes: G4, A4, B4, A4, G4, F#4, E4, D4.

He is a friend that's well known;

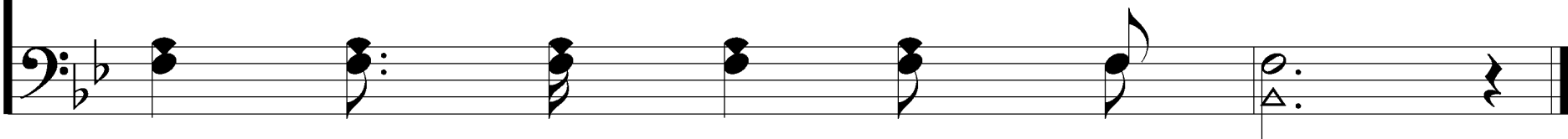
Musical notation for the second staff of the second line, bass clef, G major, 4/4 time. The accompaniment consists of quarter notes: G2, A2, B2, A2, G2, F#2, E2, D2.

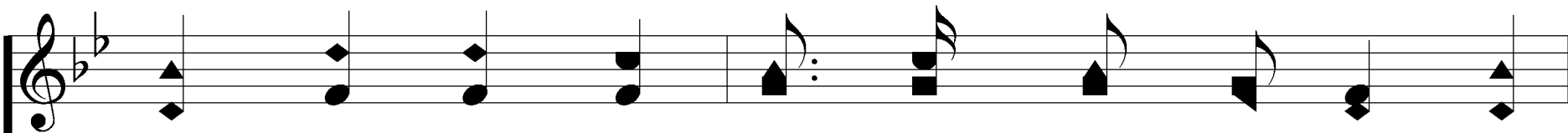


You have no oth-er such a friend or broth-er;

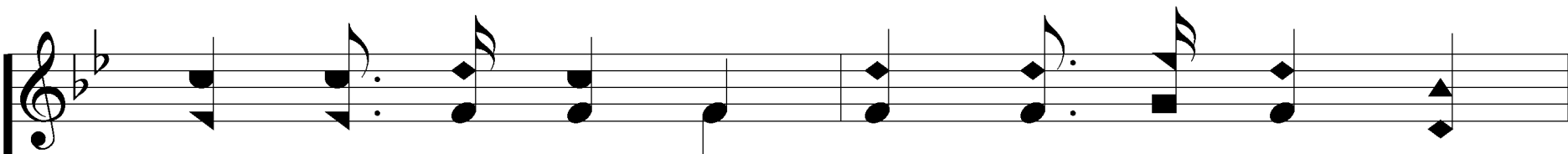


Tell it to Je - sus a - lone.

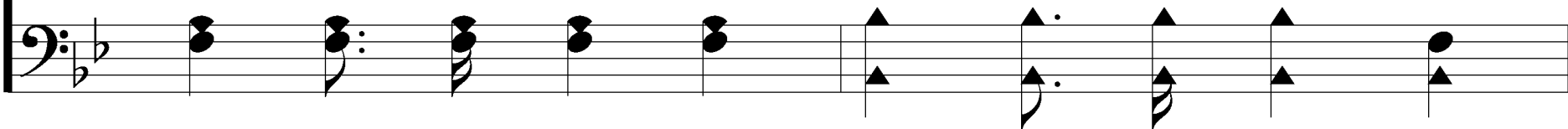


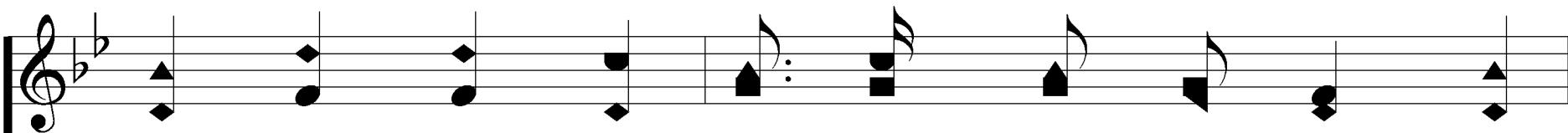


2. Do the tears flow down your cheeks un-bid-den?

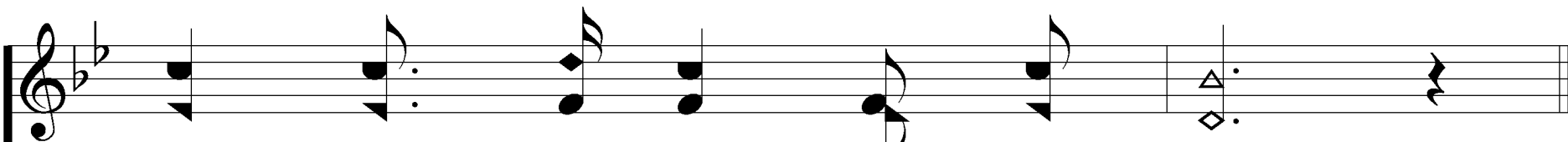


Tell it to Je - sus, Tell it to Je - sus;

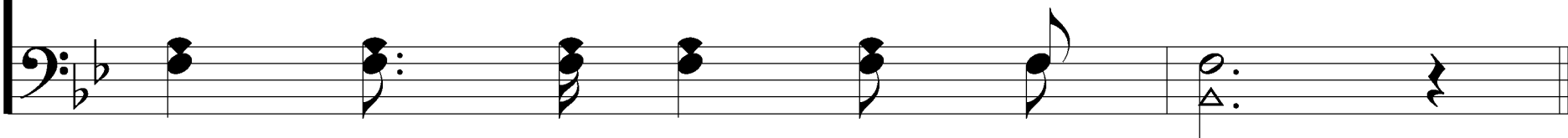




Have you sins that to man's eyes are hid - den?



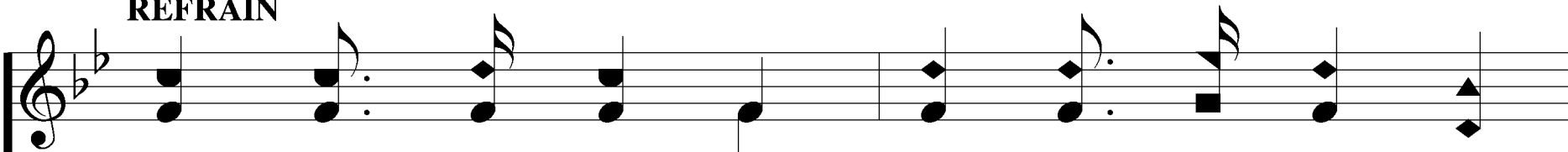
Tell it to Je - sus a - lone.



Tell It To Jesus Alone

502

REFRAIN

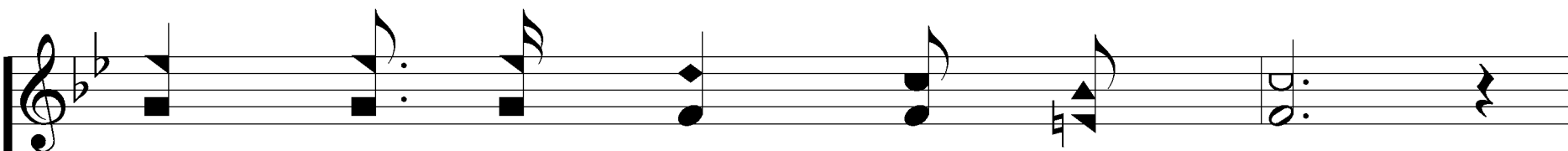


Musical notation for the first staff of the refrain, treble clef, G major, 4/4 time. The melody consists of quarter notes: G4, A4, B4, A4, G4, F#4, E4, D4, C4.

Tell it to Je - sus, Tell it to Je - sus,

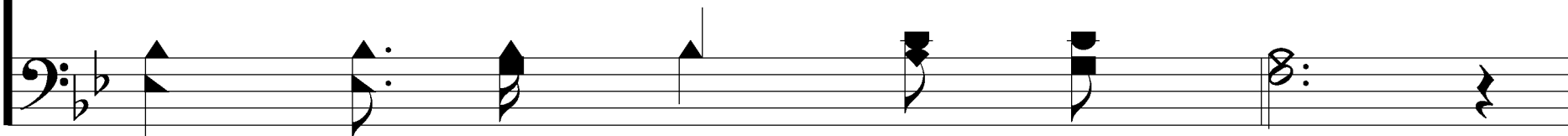


Musical notation for the second staff of the refrain, bass clef, G major, 4/4 time. The accompaniment consists of quarter notes: G3, A3, B3, A3, G3, F#3, E3, D3, C3.

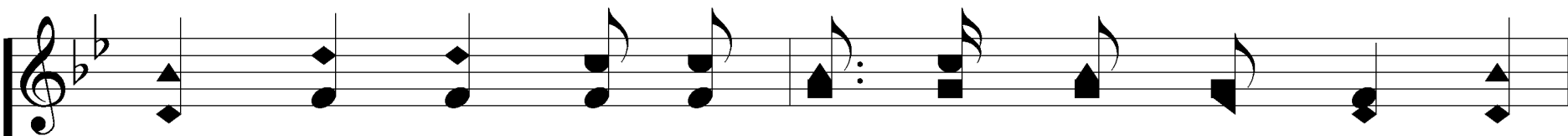


Musical notation for the first staff of the second line, treble clef, G major, 4/4 time. The melody consists of quarter notes: D4, E4, F#4, G4, A4, B4, A4, G4, F#4, E4, D4, C4.

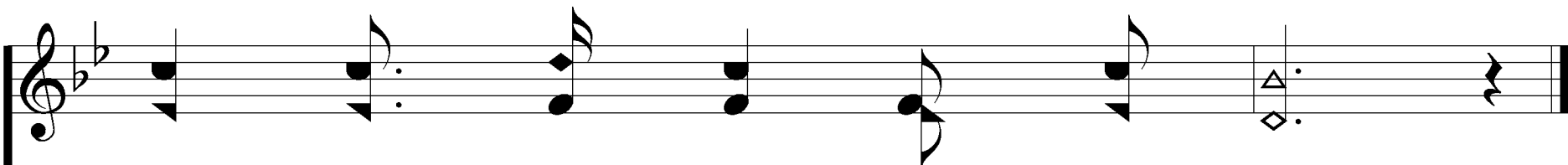
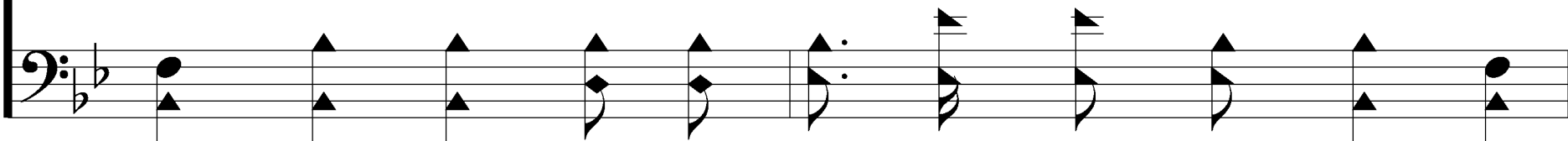
He is a friend that's well known;



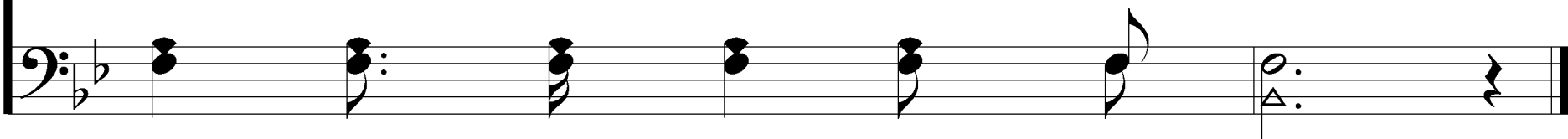
Musical notation for the second staff of the second line, bass clef, G major, 4/4 time. The accompaniment consists of quarter notes: D3, E3, F#3, G3, A3, B3, A3, G3, F#3, E3, D3, C3.

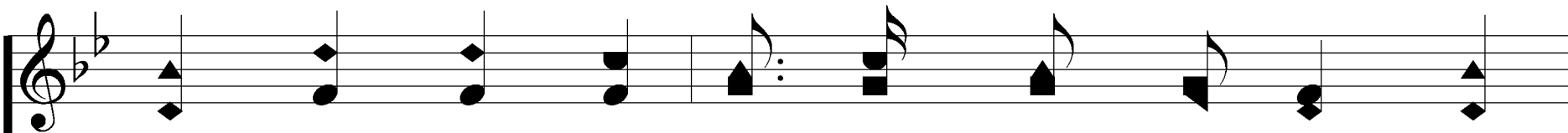


You have no oth-er such a friend or broth-er;

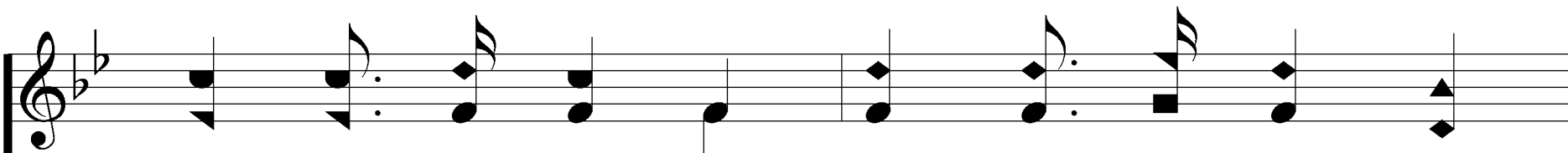


Tell it to Je - sus a - lone.

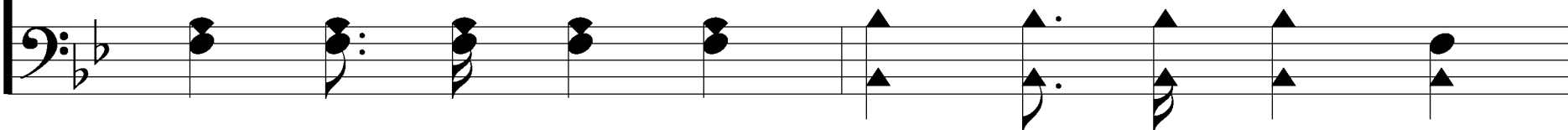


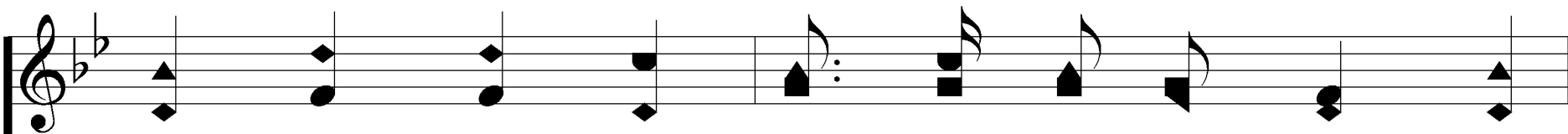


3. Do you fear the gath-'ring clouds of sor - row?

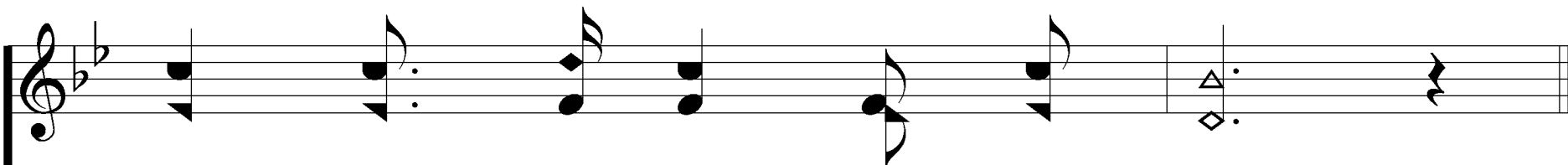


Tell it to Je - sus, Tell it to Je - sus;

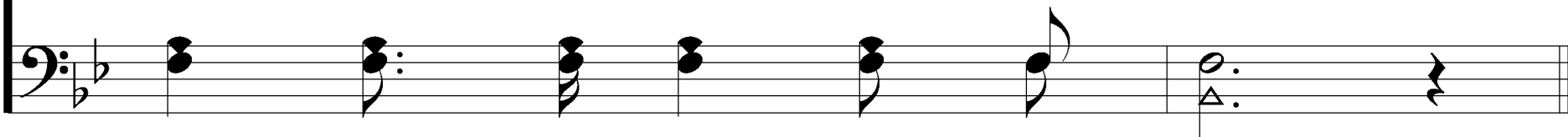




Are you anx - ious what will be to - mor - row?



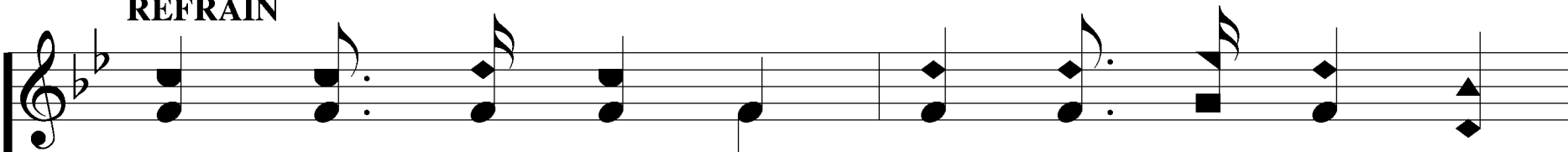
Tell it to Je - sus a - lone.



Tell It To Jesus Alone

502

REFRAIN

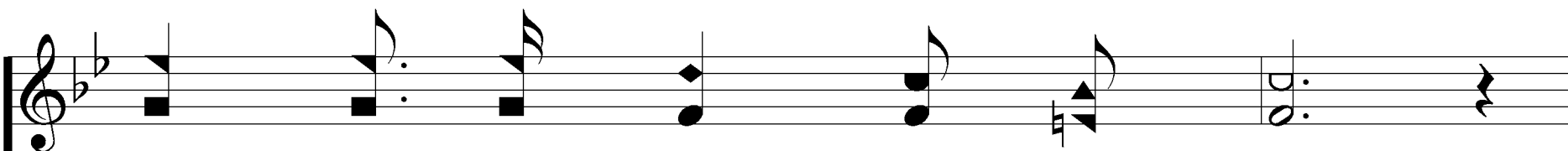


Musical notation for the first staff of the refrain, treble clef, key signature of two flats, 4/4 time signature.

Tell it to Je - sus, Tell it to Je - sus,

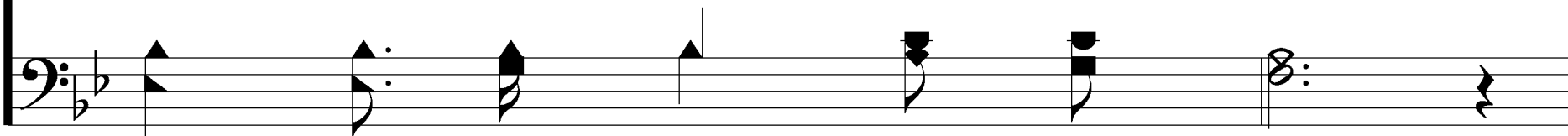


Musical notation for the second staff of the refrain, bass clef, key signature of two flats, 4/4 time signature.

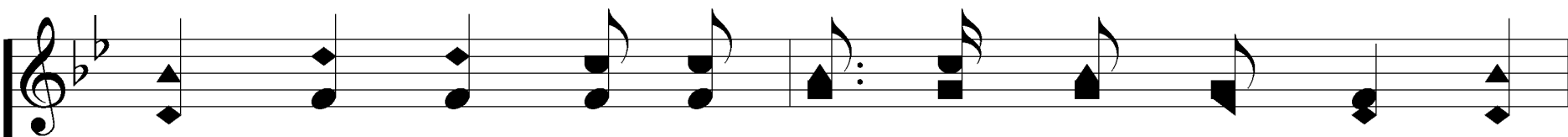


Musical notation for the first staff of the second line, treble clef, key signature of two flats, 4/4 time signature.

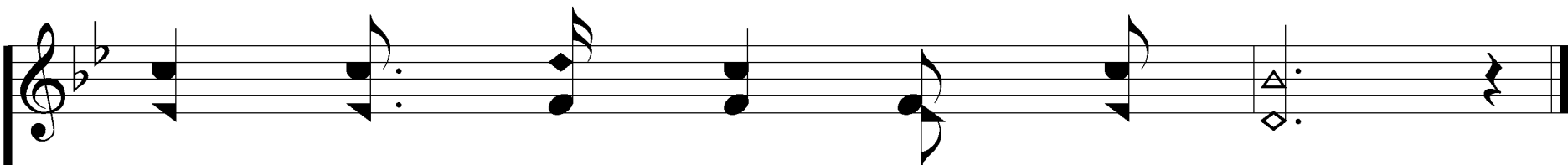
He is a friend that's well known;



Musical notation for the second staff of the second line, bass clef, key signature of two flats, 4/4 time signature.



You have no oth-er such a friend or broth-er;



Tell it to Je - sus a - lone.

