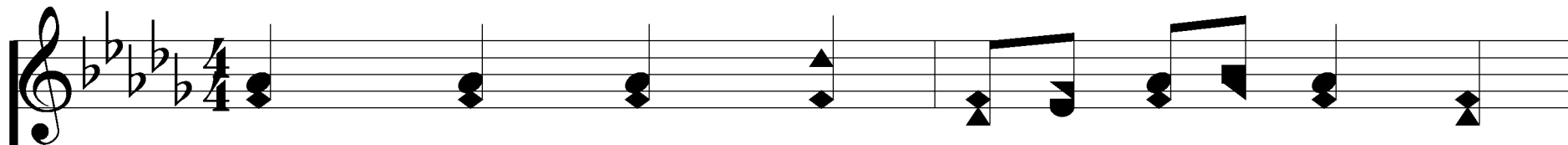
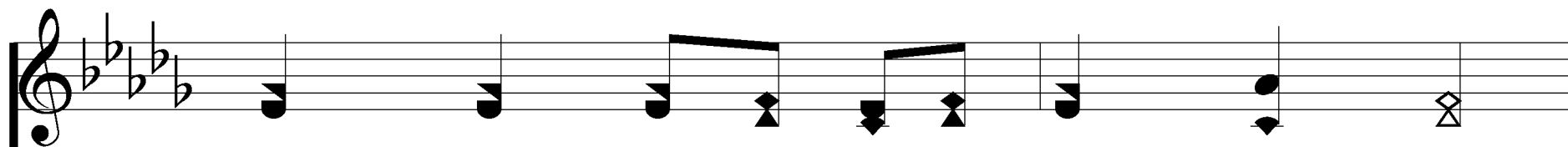
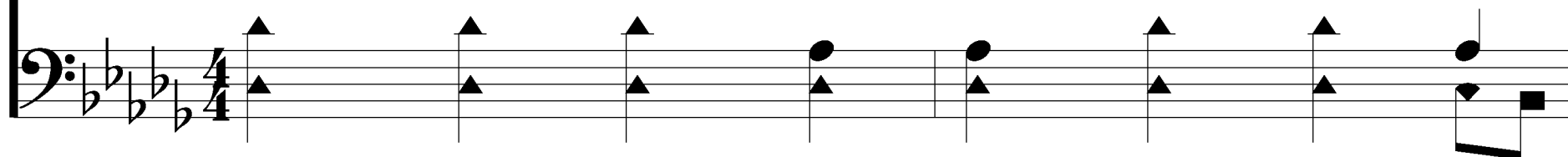


When We All Get To Heaven

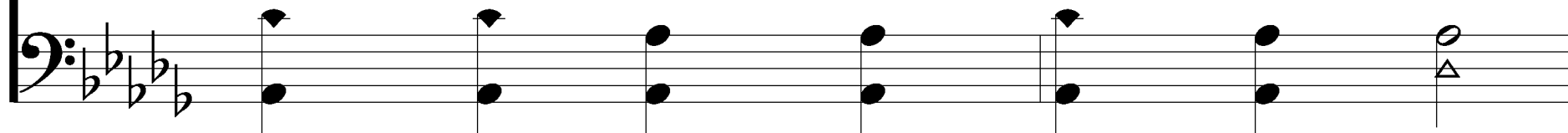
708



1. Sing the won - drous love of Je - sus,



Sing His mer - cy and His grace;



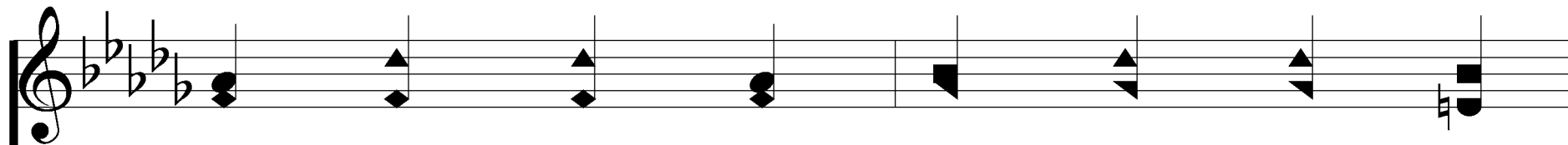
1 Thess. 4:16-18

Words: Eliza E. Hewitt

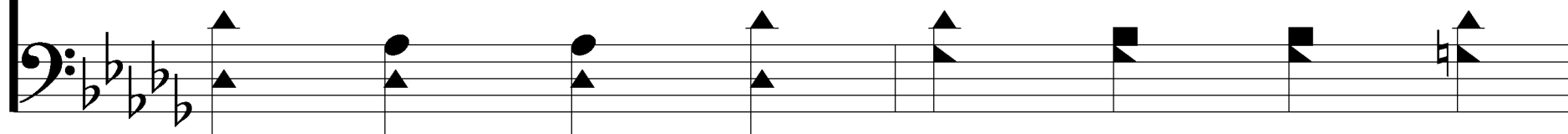
Music: Emily D. Wilson

When We All Get To Heaven

708



In the man - sions, bright and bless - ed,



He'll pre - pare for us a place.



for us a place.

When We All Get To Heaven

708

REFRAIN

When we all get to heav-en, What a
When we all

day of re-joic-ing that will be!

What a day of re - joic-ing that will be!

When We All Get To Heaven

708



Musical notation for the first system, treble clef. The key signature has four flats (B-flat, E-flat, A-flat, D-flat). The melody begins with a quarter note G4, followed by a quarter note A4, a quarter note B4, and a dotted quarter note C5. The next measure contains a quarter note B4, a quarter note A4, and a quarter note G4. The final measure contains a quarter note F4, a quarter note E4, and a quarter note D4.

When we all see Je - sus, We'll

When we all



Musical notation for the first system, bass clef. The bass line starts with a dotted quarter note G2, followed by a quarter note F2, a quarter note E2, and a quarter note D2. The next measure contains a quarter note C2, a quarter note B1, and a quarter note A1. The final measure contains a quarter note G1, a quarter note F1, and a quarter note E1.

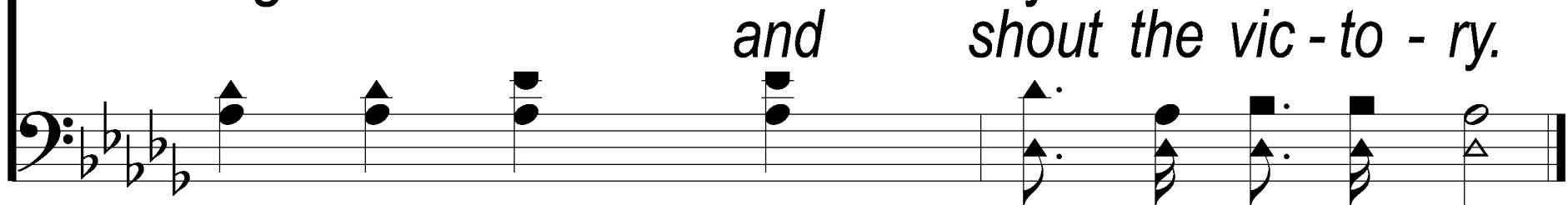


Musical notation for the second system, treble clef. The melody continues with a quarter note D4, a quarter note E4, a quarter note F4, and a quarter note G4. The next measure contains a quarter note A4, a quarter note B4, and a quarter note C5. The final measure contains a quarter note B4, a quarter note A4, and a quarter note G4.

sing and shout the vic - to - ry.

and

shout the vic - to - ry.



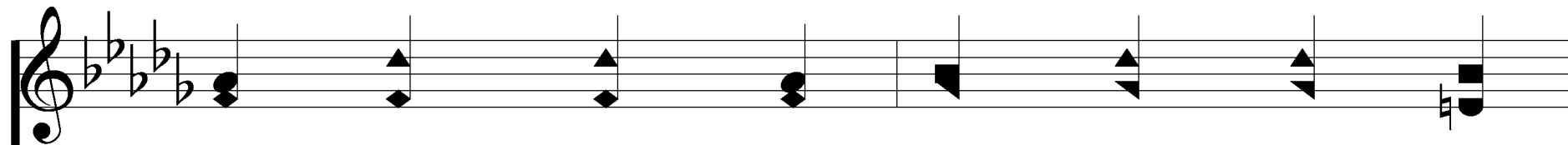
Musical notation for the second system, bass clef. The bass line continues with a quarter note D2, a quarter note E2, and a quarter note F2. The next measure contains a quarter note G2, a quarter note A2, and a quarter note B2. The final measure contains a quarter note C3, a quarter note B2, and a quarter note A2.

2. While we walk the pil - grim path - way,

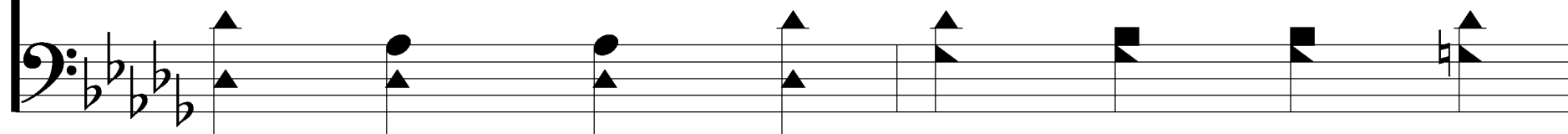
Clouds will ov - er - spread the sky

When We All Get To Heaven

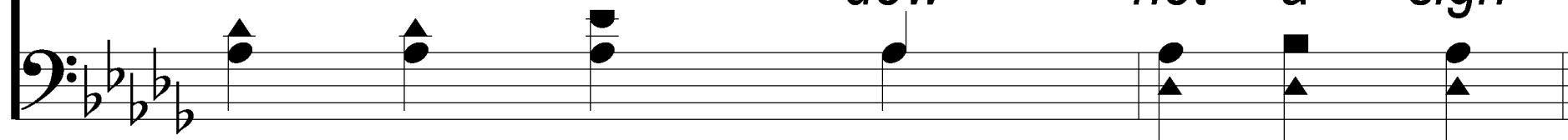
708



But when trav - 'ling days are o - ver



Not a shad - ow, not a sigh.



dow not a sigh

When We All Get To Heaven

708

REFRAIN

When we all get to heav-en, What a
When we all

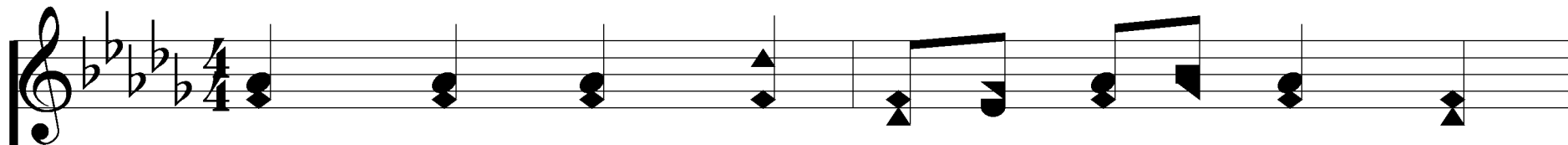
day of re-joic-ing that will be!
What a day of re - joic-ing that will be!

When We All Get To Heaven

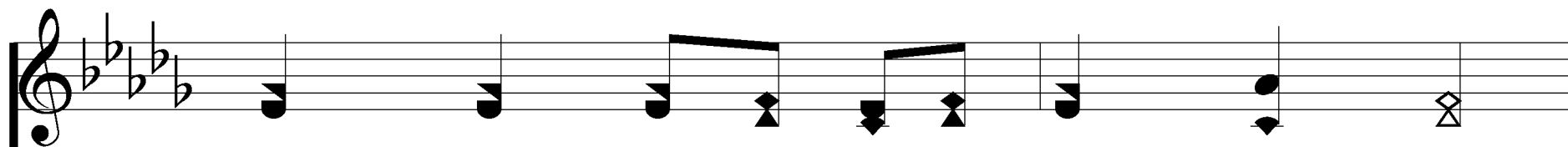
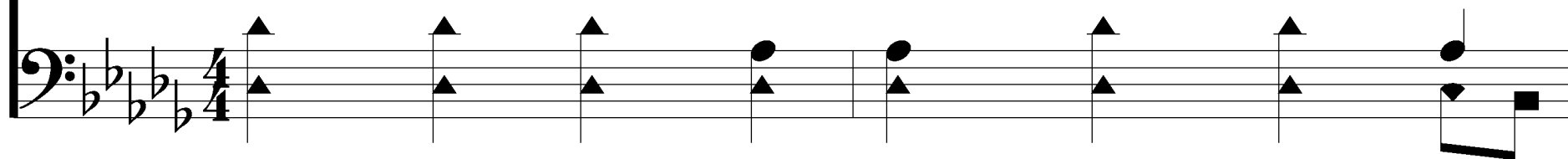
708

When we all see Je - sus, We'll
When we all
sing and shout the vic - to - ry.
and shout the vic - to - ry.

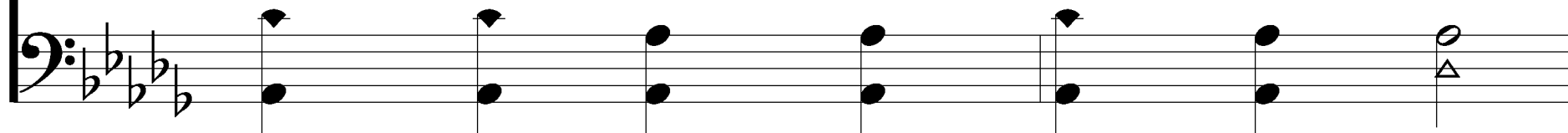
The image shows a musical score for the hymn "When We All Get To Heaven". It consists of two systems of music. Each system has a vocal line (treble clef) and a piano accompaniment line (bass clef). The key signature is three flats (B-flat, E-flat, A-flat), and the time signature is 4/4. The lyrics are: "When we all see Je - sus, We'll sing and shout the vic - to - ry." The second system includes italicized lyrics: "When we all" and "and shout the vic - to - ry." The piano accompaniment features chords and moving lines in both hands.



3. Let us then be true and faith - ful,

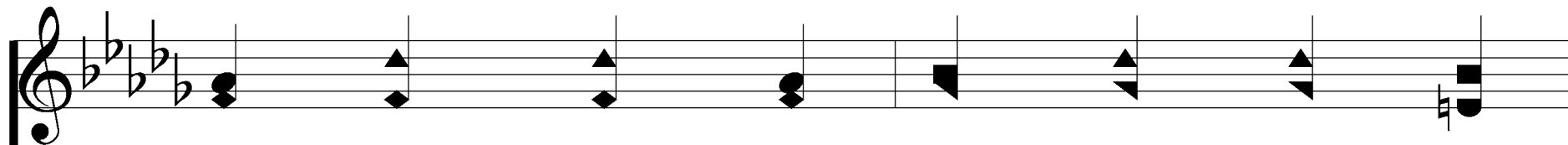


Trust - ing serv - ing ev - 'ry day;

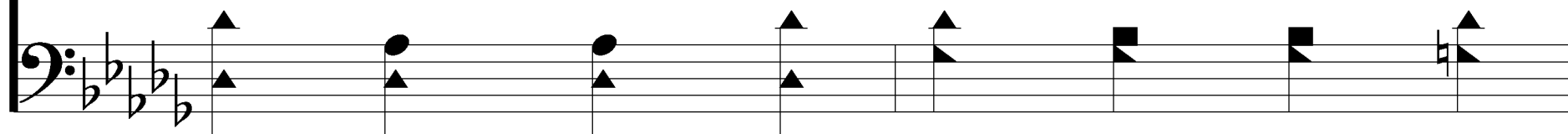


When We All Get To Heaven

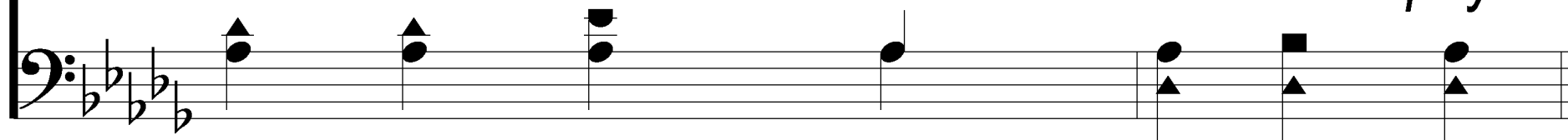
708



Just one glimpse of Him in glo - ry



Will the toils of life re - pay.



of life re - pay.

When We All Get To Heaven

708

REFRAIN

When we all get to heav-en, What a
When we all

day of re-joic-ing that will be!
What a day of re - joic-ing that will be!

When We All Get To Heaven

708

When we all see Je - sus, We'll
When we all
sing and shout the vic - to - ry.
and shout the vic - to - ry.

The image shows a musical score for the hymn "When We All Get To Heaven". It consists of two systems of music. Each system has a vocal line (treble clef) and a piano accompaniment line (bass clef). The key signature is three flats (B-flat, E-flat, A-flat), and the time signature is 4/4. The lyrics are: "When we all see Je - sus, We'll sing and shout the vic - to - ry." The second system includes italicized lyrics: "When we all" and "and shout the vic - to - ry." The piano accompaniment features chords and moving lines in both hands.