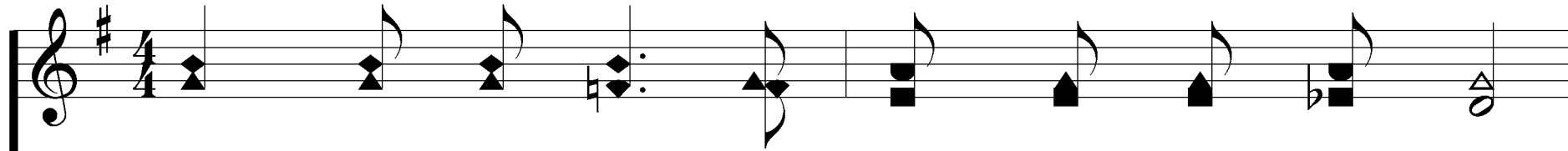
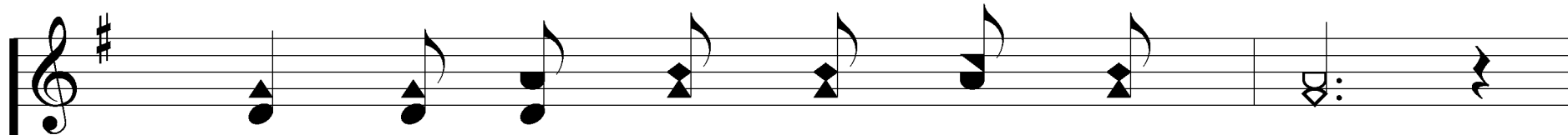
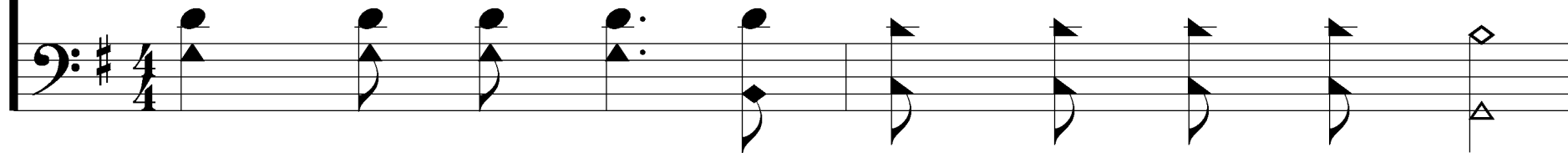


Where Could I Go

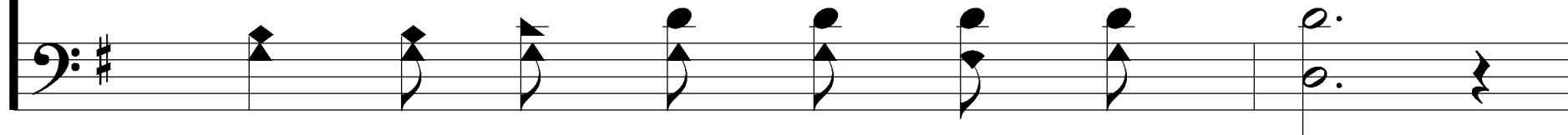
425



1. Liv - ing be - low in this old sin - ful world,

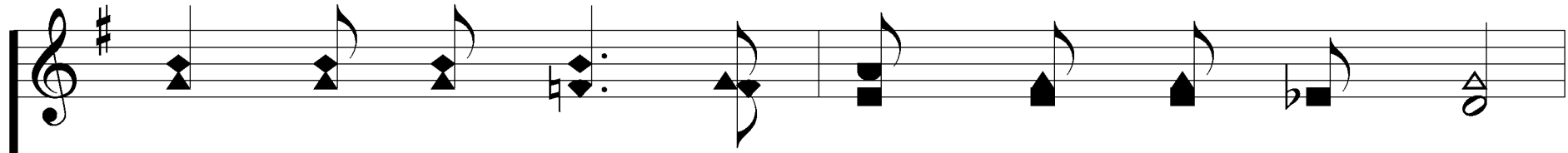


Hard - ly a com - fort can af - ford;

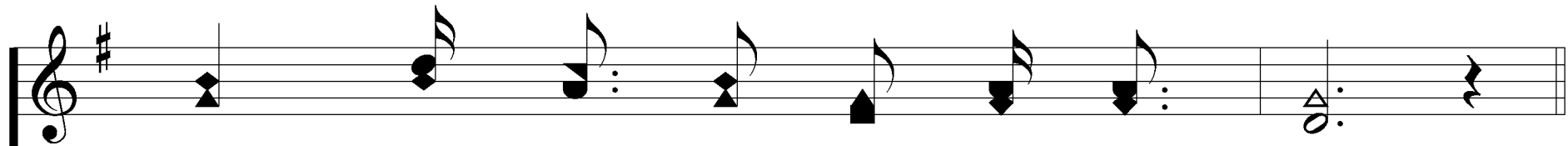
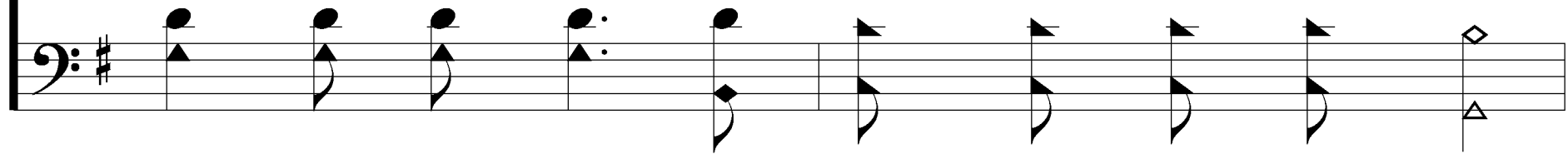


Where Could I Go

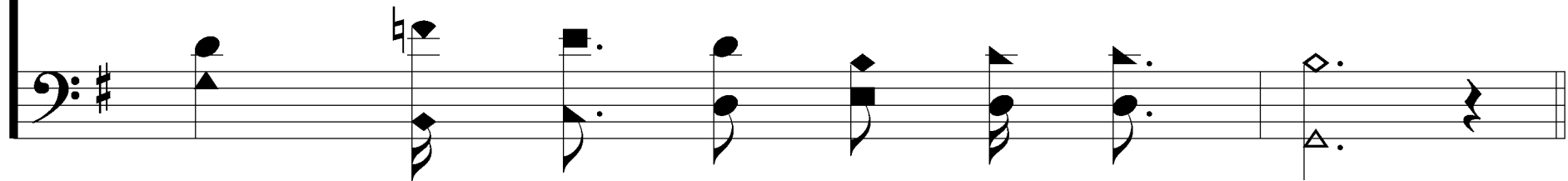
425



Striv - ing a - lone to face temp - ta - tions sore,



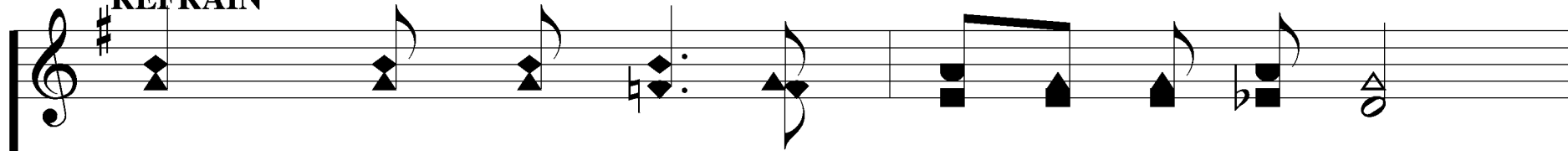
Where could I go but to the Lord?



Where Could I Go

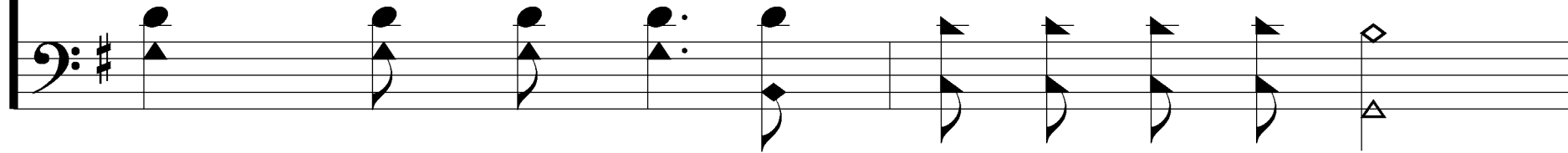
425

REFRAIN

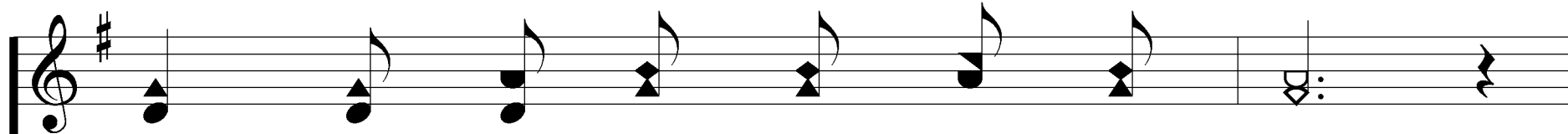


Musical notation for the first staff of the refrain, treble clef, G major key signature. The melody consists of quarter notes: G4, A4, B4, C5 (quarter rest), D5, E5, F#5, G5, and a whole note G5.

Where could I go, O where could I go,

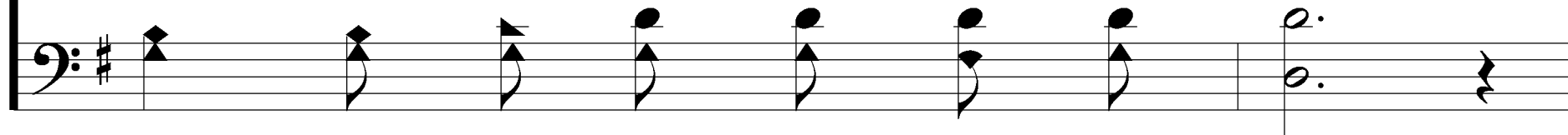


Musical notation for the second staff of the refrain, bass clef, G major key signature. The accompaniment consists of quarter notes: G3, A3, B3, C4 (quarter rest), D4, E4, F#4, G4, and a whole note G4.



Musical notation for the third staff of the refrain, treble clef, G major key signature. The melody consists of quarter notes: G4, A4, B4, C5 (quarter rest), D5, E5, F#5, G5, and a whole note G5.

Seek - ing a ref - uge for my soul?



Musical notation for the fourth staff of the refrain, bass clef, G major key signature. The accompaniment consists of quarter notes: G3, A3, B3, C4 (quarter rest), D4, E4, F#4, G4, and a whole note G4.

Where Could I Go

425



Need - ing a friend to save me in the end,



Where could I go but to the Lord?

Where Could I Go

425

The first staff of the first system is a treble clef in 4/4 time with a key signature of one sharp (F#). It contains the following notes: G4 (quarter), A4 (quarter), B4 (quarter), C5 (quarter), B4 (quarter), A4 (quarter), G4 (quarter), F#4 (quarter), E4 (quarter), D4 (half).

2. Neigh-bors are kind, I love them ev - 'ry one,

The second staff of the first system is a bass clef in 4/4 time with a key signature of one sharp (F#). It contains the following notes: G3 (quarter), A3 (quarter), B3 (quarter), C4 (quarter), B3 (quarter), A3 (quarter), G3 (quarter), F#3 (quarter), E3 (quarter), D3 (half).

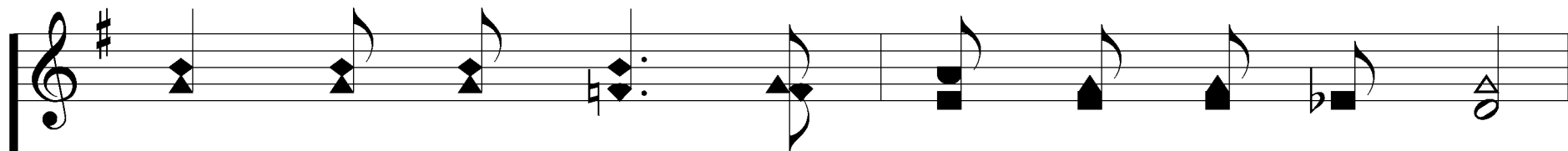
The first staff of the second system is a treble clef in 4/4 time with a key signature of one sharp (F#). It contains the following notes: G4 (quarter), A4 (quarter), B4 (quarter), C5 (quarter), B4 (quarter), A4 (quarter), G4 (quarter), F#4 (quarter), E4 (quarter), D4 (half).

We get a - long in sweet ac - cord;

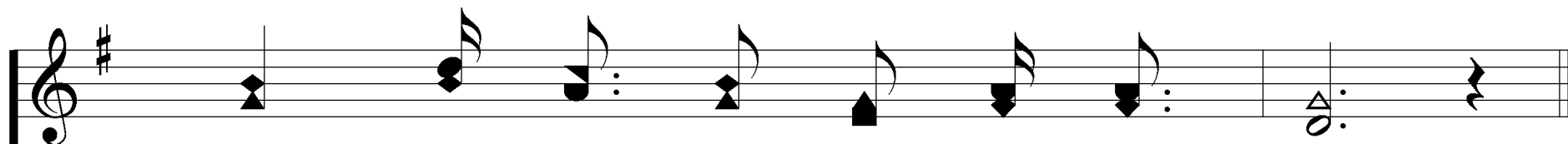
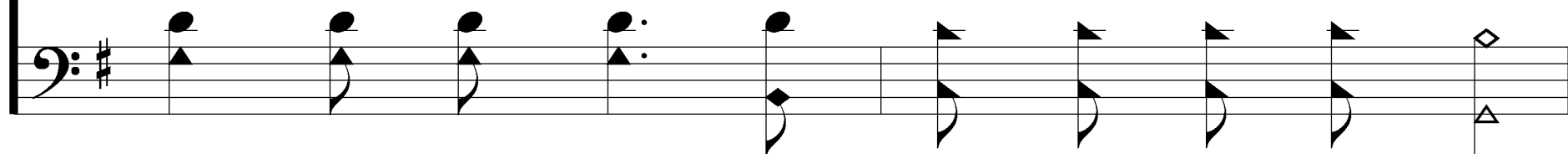
The second staff of the second system is a bass clef in 4/4 time with a key signature of one sharp (F#). It contains the following notes: G3 (quarter), A3 (quarter), B3 (quarter), C4 (quarter), B3 (quarter), A3 (quarter), G3 (quarter), F#3 (quarter), E3 (quarter), D3 (half).

Where Could I Go

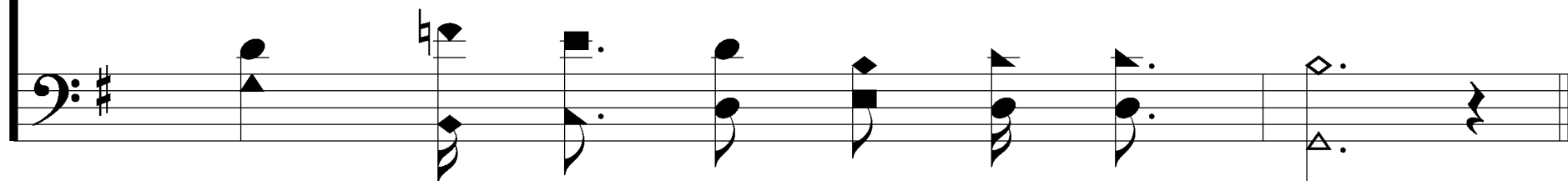
425



But when my soul needs man - na from a - bove,



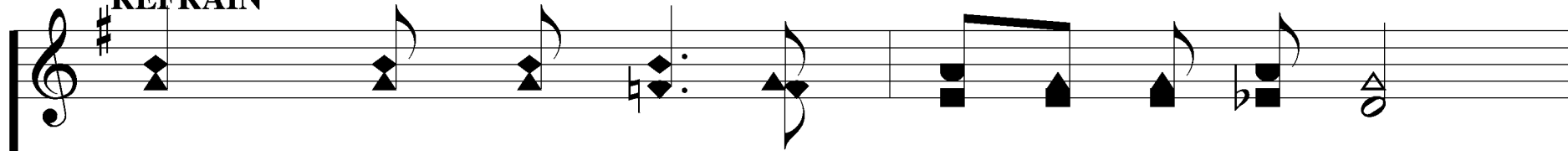
Where could I go but to the Lord?



Where Could I Go

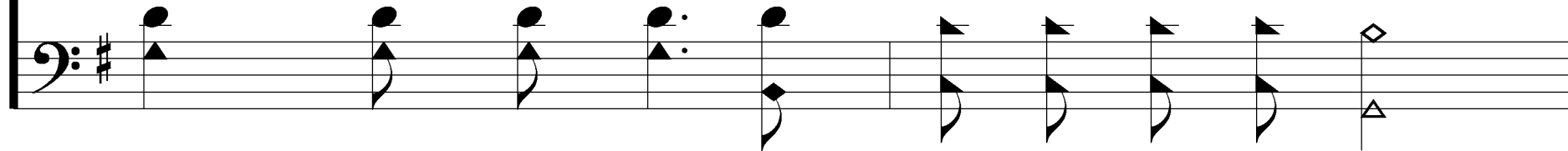
425

REFRAIN

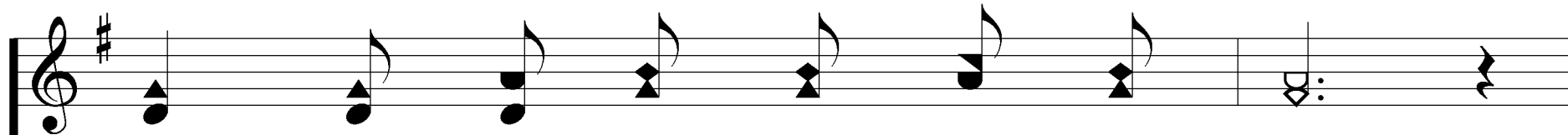


Musical notation for the first staff of the refrain, treble clef, key signature of one sharp (F#), and common time signature. The melody consists of quarter notes and eighth notes.

Where could I go, O where could I go,

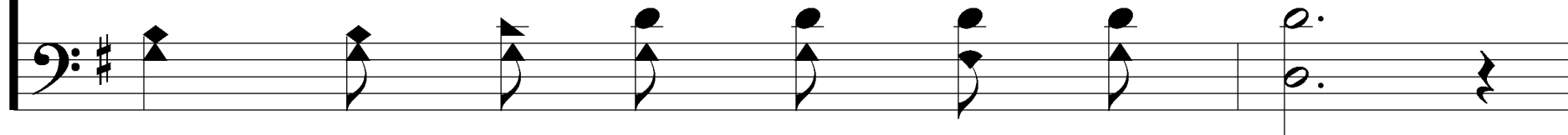


Musical notation for the second staff of the refrain, bass clef, key signature of one sharp (F#), and common time signature. The accompaniment consists of quarter notes and eighth notes.



Musical notation for the third staff of the refrain, treble clef, key signature of one sharp (F#), and common time signature. The melody consists of quarter notes and eighth notes.

Seek - ing a ref - uge for my soul?



Musical notation for the fourth staff of the refrain, bass clef, key signature of one sharp (F#), and common time signature. The accompaniment consists of quarter notes and eighth notes.

Where Could I Go

425



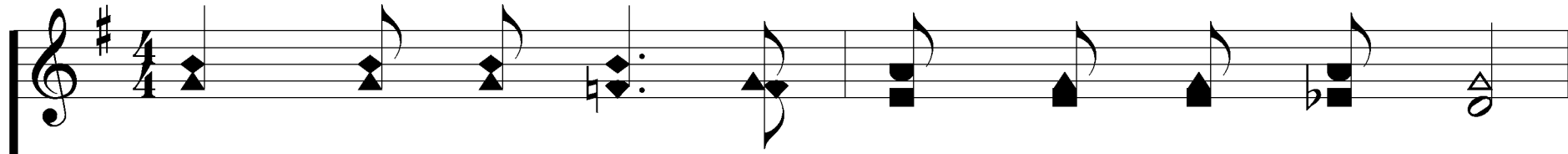
Need - ing a friend to save me in the end,



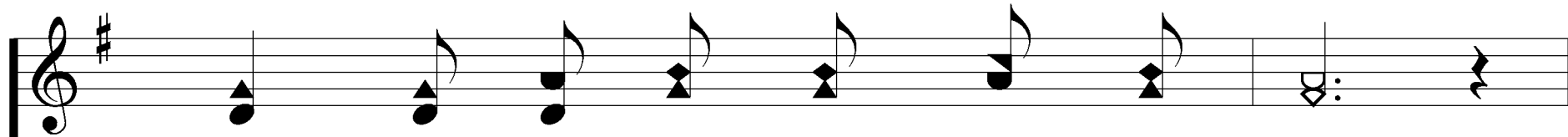
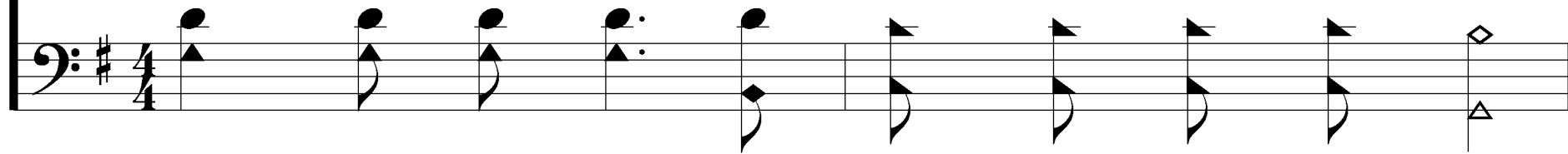
Where could I go but to the Lord?

Where Could I Go

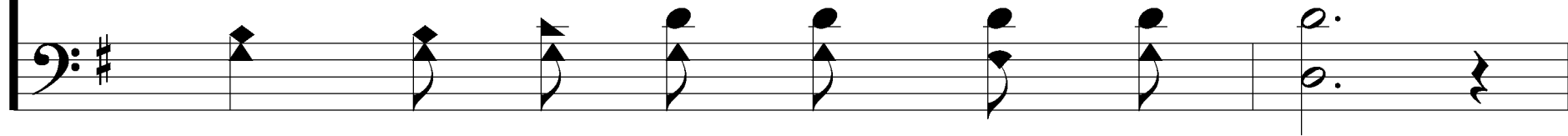
425



3. Life here is grand with friends I love so dear,

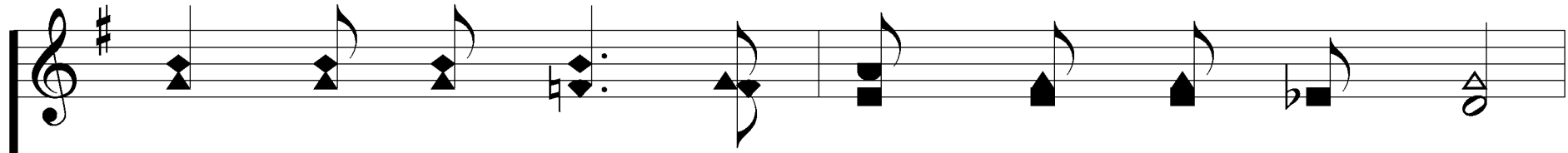


Com - fort I get from God's own word;

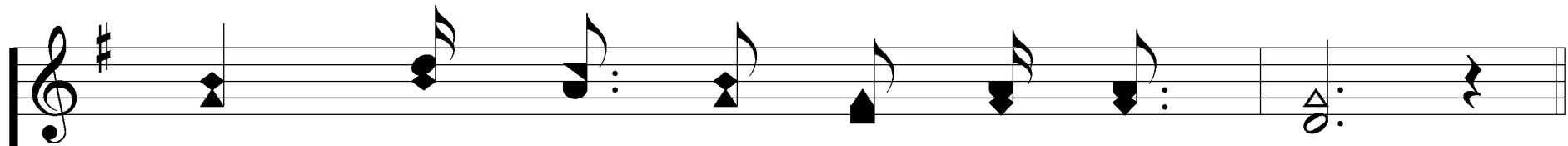
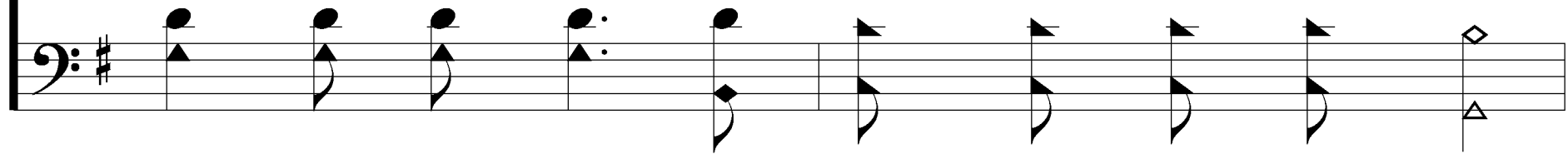


Where Could I Go

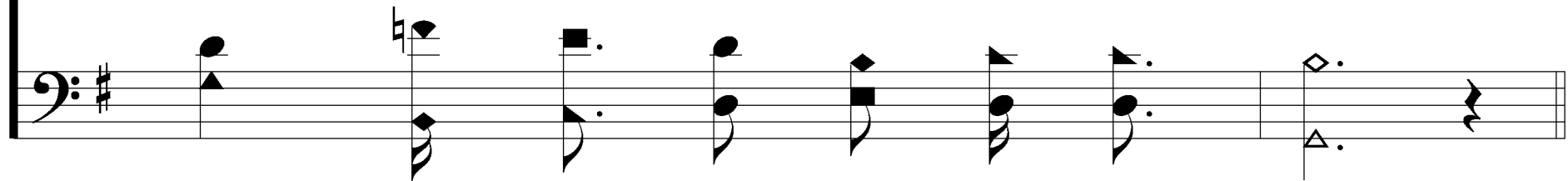
425



Yet when I face the chill - ing hand of death,



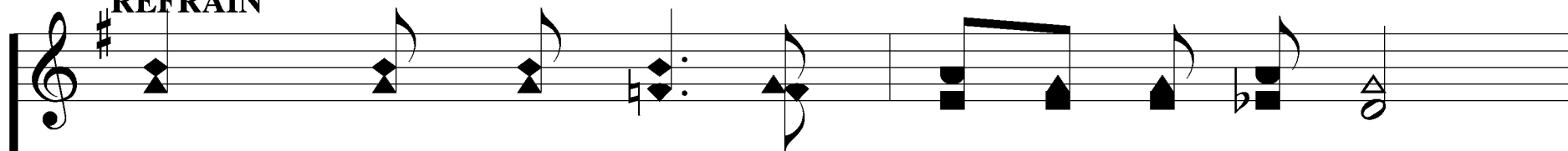
Where could I go but to the Lord?



Where Could I Go


425

REFRAIN

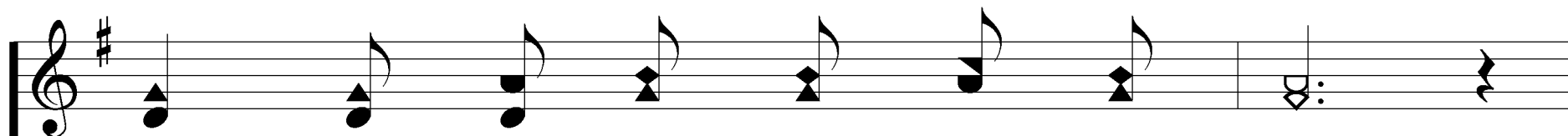


Musical notation for the first staff of the refrain, treble clef, G major key signature. The melody consists of quarter notes: G4, A4, B4, C5 (quarter rest), D5, E5, F#5, G5, and a whole note G5.

Where could I go, O where could I go,

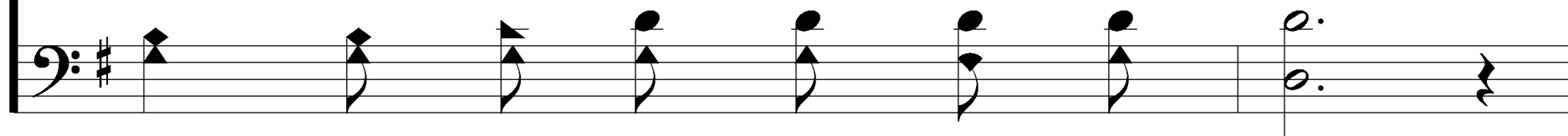


Musical notation for the second staff of the refrain, bass clef, G major key signature. The accompaniment consists of quarter notes: G3, A3, B3, C4 (quarter rest), D4, E4, F#4, G4, and a whole note G4.



Musical notation for the third staff of the refrain, treble clef, G major key signature. The melody consists of quarter notes: G4, A4, B4, C5 (quarter rest), D5, E5, F#5, G5, and a whole note G5.

Seek - ing a ref - uge for my soul?



Musical notation for the fourth staff of the refrain, bass clef, G major key signature. The accompaniment consists of quarter notes: G3, A3, B3, C4 (quarter rest), D4, E4, F#4, G4, and a whole note G4.

Where Could I Go

425



Need - ing a friend to save me in the end,



Where could I go but to the Lord?