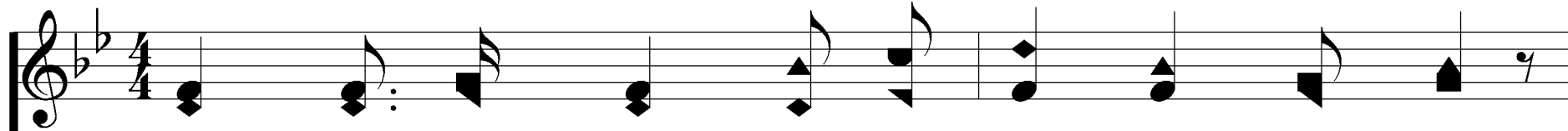
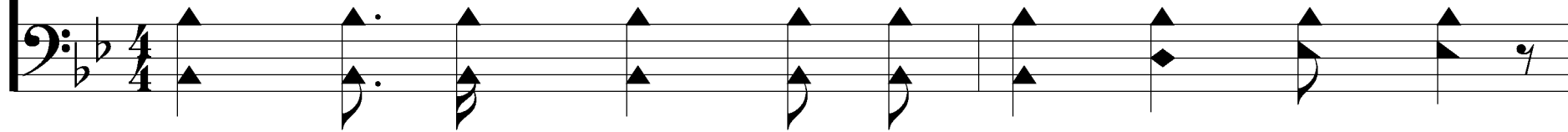


Will Jesus Find Us Watching

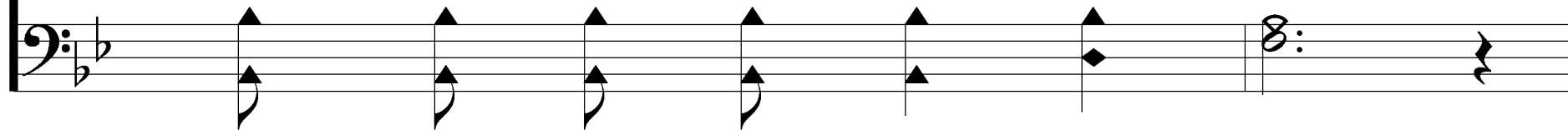
721



1. When Je - sus comes to re - ward His serv - ants,



Wheth - er it be noon or night,



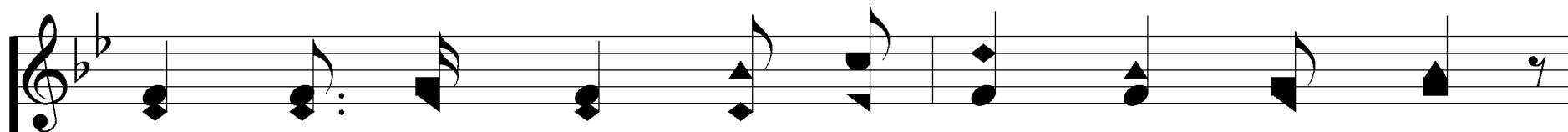
Lk. 12:37

Words: Fanny J. Crosby

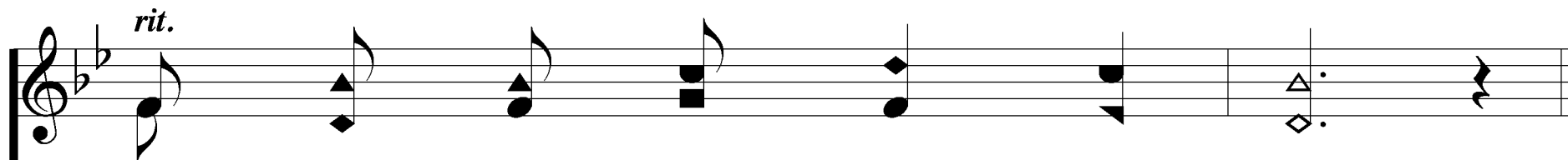
Music: William H. Doane

Will Jesus Find Us Watching

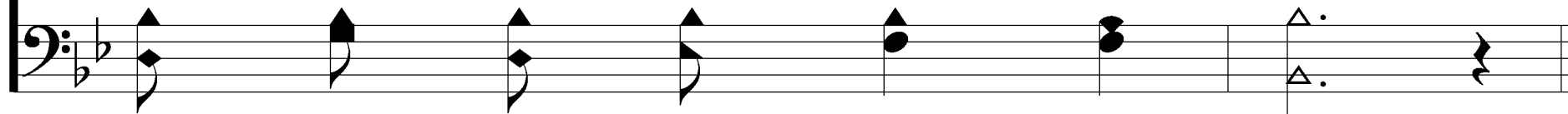
721



Faith - ful to Him will He find us watch-ing,



With our lamps all trimmed and bright?



Will Jesus Find Us Watching

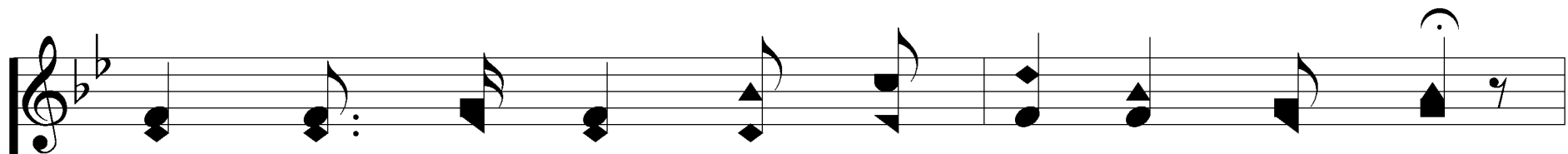
REFRAIN

O can we say we are read-y, broth - er?

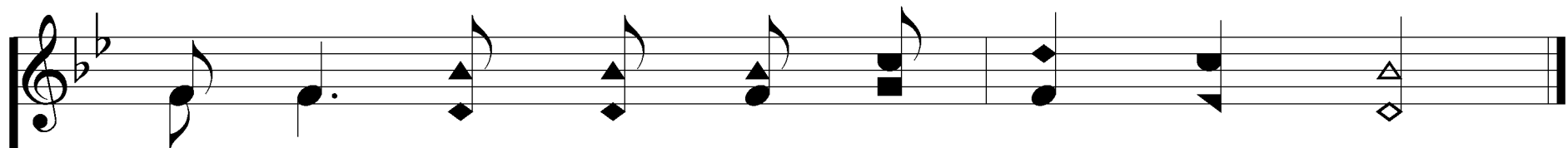
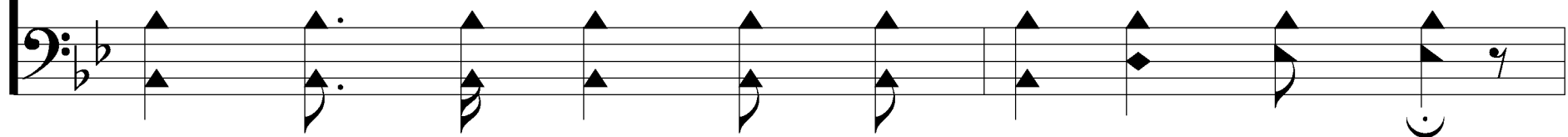
Read - y for the soul's bright home?

Will Jesus Find Us Watching

721



Say, will He find you and me still watch-ing,

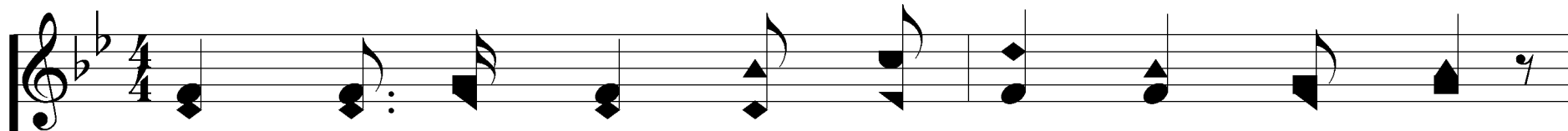


Wait-ing, wait - ing when the Lord shall come?

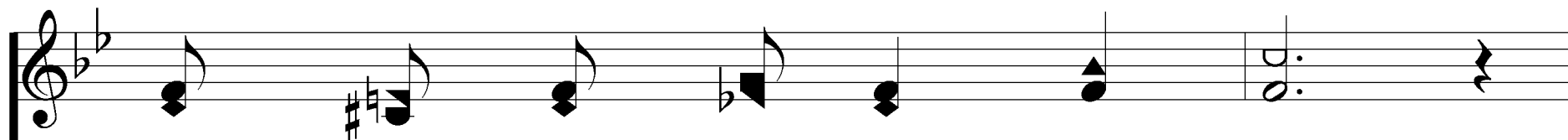
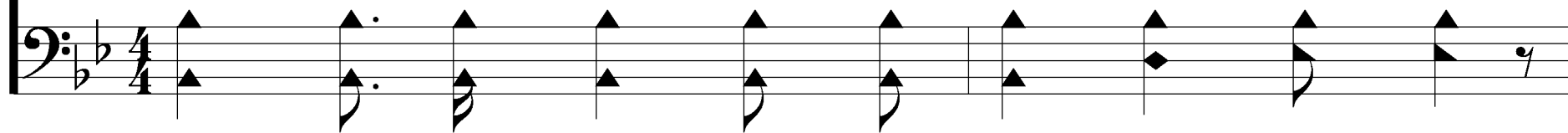


Will Jesus Find Us Watching

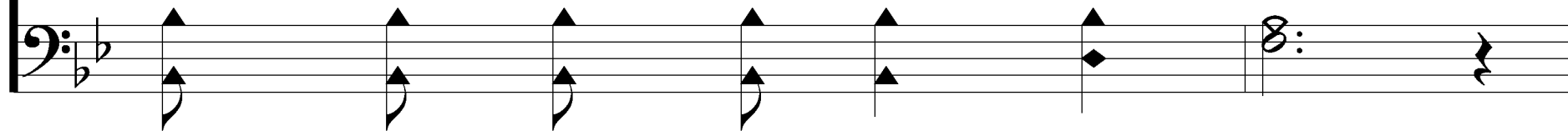
721



2. If at the dawn of the ear - ly morn-ing,

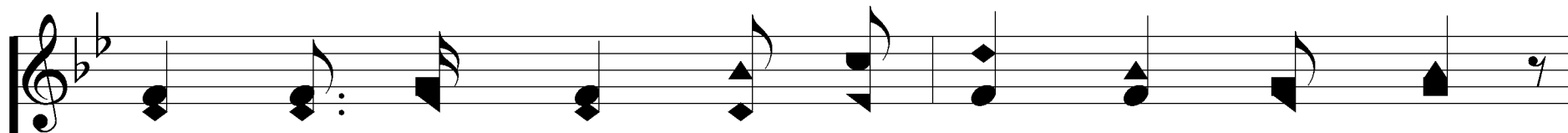


He shall call us one by one,

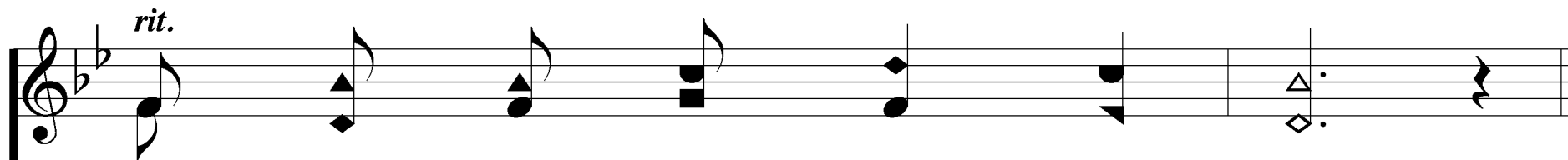


Will Jesus Find Us Watching

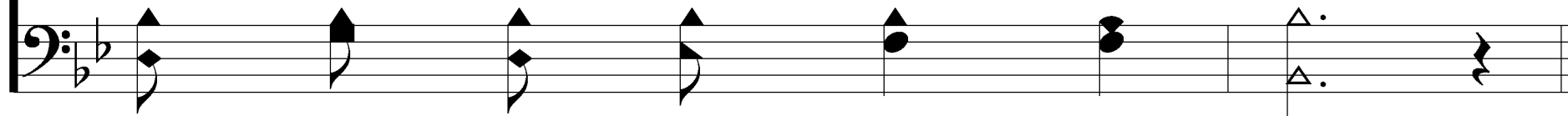
721



When to the Lord we re-store our tal - ents,



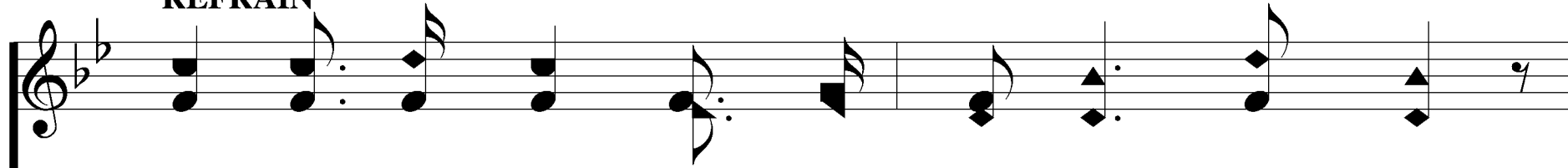
Will He an - swer thee "Well done?"



Will Jesus Find Us Watching

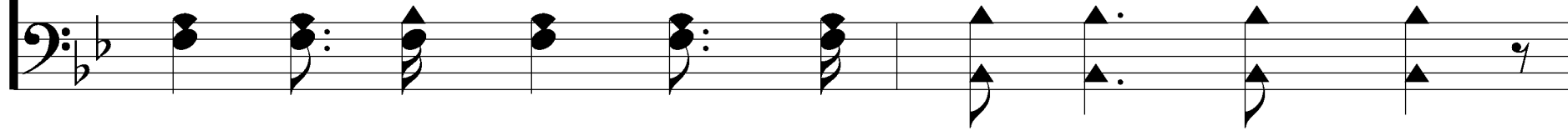
721

REFRAIN

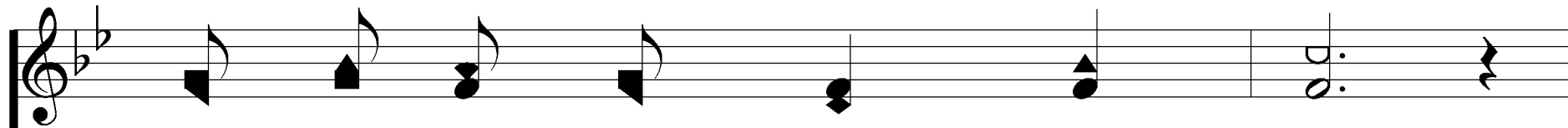


Musical notation for the first staff of the refrain, treble clef, G major, 4/4 time. The melody consists of the following notes: G4 (quarter), A4 (quarter), B4 (quarter), A4 (quarter), G4 (quarter), F#4 (quarter), E4 (quarter), D4 (quarter), C4 (quarter), B3 (quarter), A3 (quarter), G3 (quarter).

O can we say we are read-y, broth - er?



Musical notation for the first staff of the accompaniment, bass clef, G major, 4/4 time. The accompaniment consists of the following notes: G3 (quarter), B3 (quarter), D4 (quarter), G3 (quarter), B3 (quarter), D4 (quarter), G3 (quarter), B3 (quarter), D4 (quarter), G3 (quarter), B3 (quarter), D4 (quarter).



Musical notation for the second staff of the refrain, treble clef, G major, 4/4 time. The melody consists of the following notes: F#4 (quarter), E4 (quarter), D4 (quarter), C4 (quarter), B3 (quarter), A3 (quarter), G3 (quarter), F#4 (quarter), E4 (quarter), D4 (quarter), C4 (quarter), B3 (quarter).

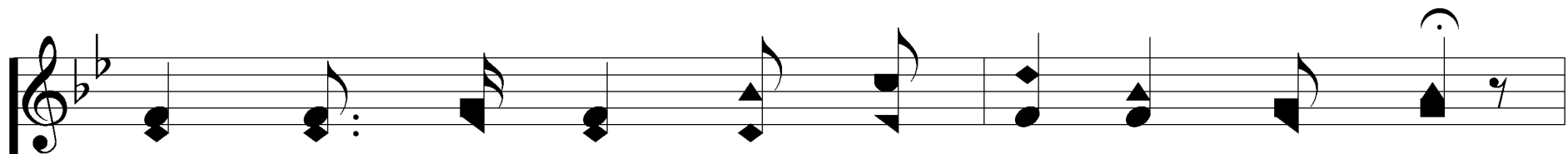
Read - y for the soul's bright home?



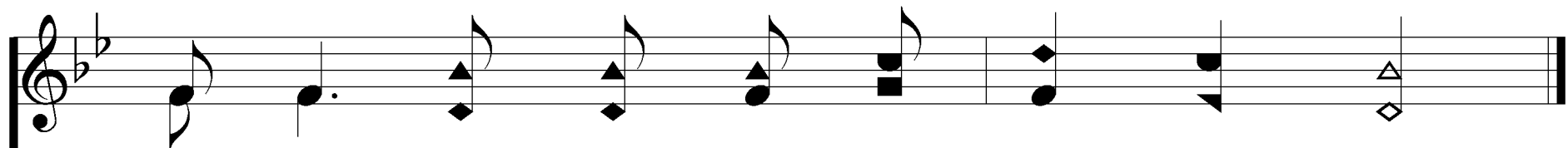
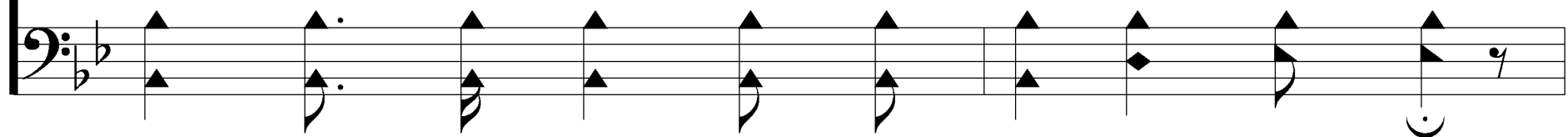
Musical notation for the second staff of the accompaniment, bass clef, G major, 4/4 time. The accompaniment consists of the following notes: G3 (quarter), B3 (quarter), D4 (quarter), G3 (quarter), B3 (quarter), D4 (quarter), G3 (quarter), B3 (quarter), D4 (quarter), G3 (quarter), B3 (quarter), D4 (quarter).

Will Jesus Find Us Watching

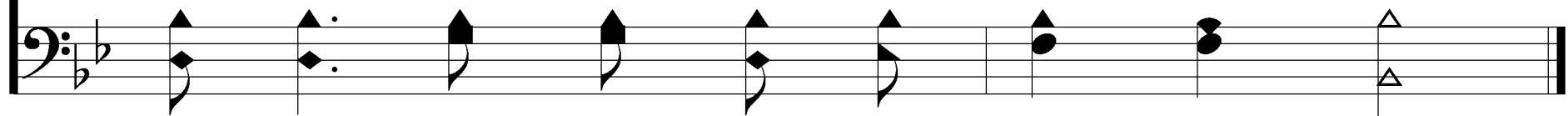
721



Say, will He find you and me still watch-ing,

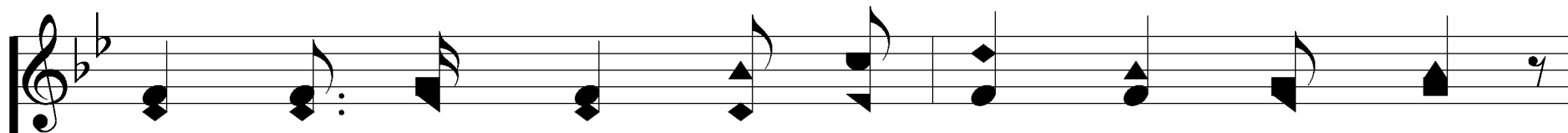


Wait-ing, wait - ing when the Lord shall come?

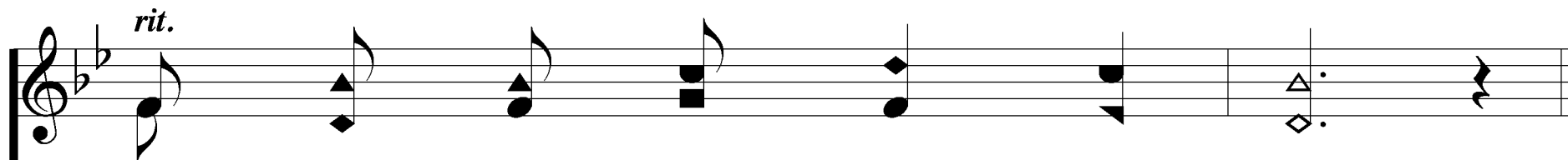


Will Jesus Find Us Watching

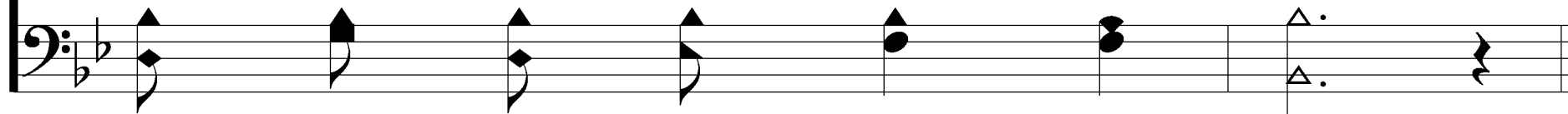
721



If He shall come at the dawn or mid-night,



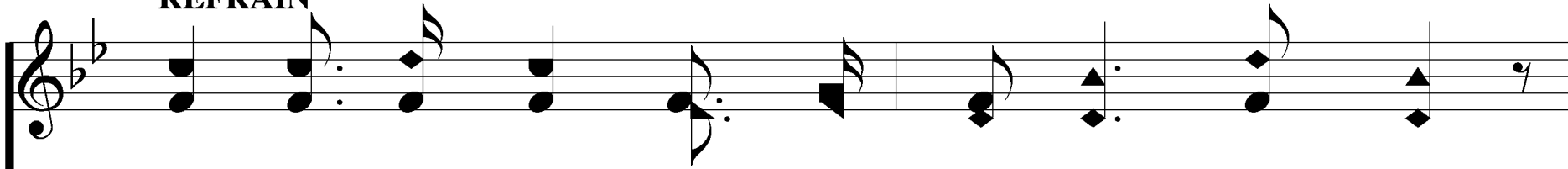
Will He find us watch - ing there?



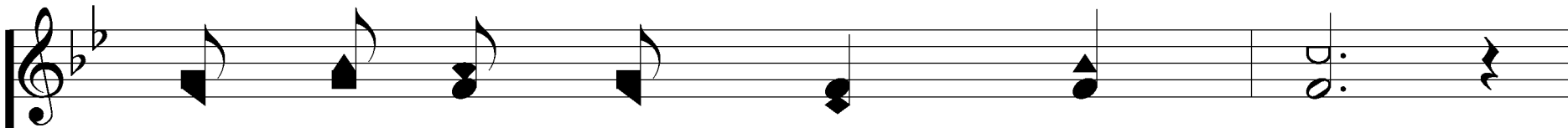

Will Jesus Find Us Watching

721

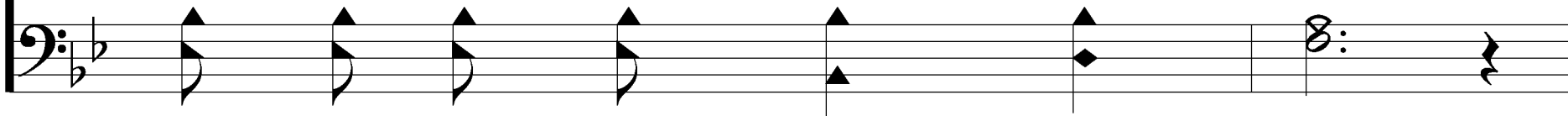
REFRAIN



O can we say we are read-y, broth - er?

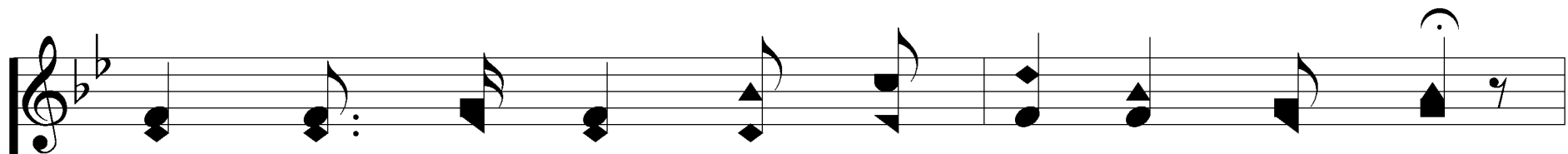


Read - y for the soul's bright home?

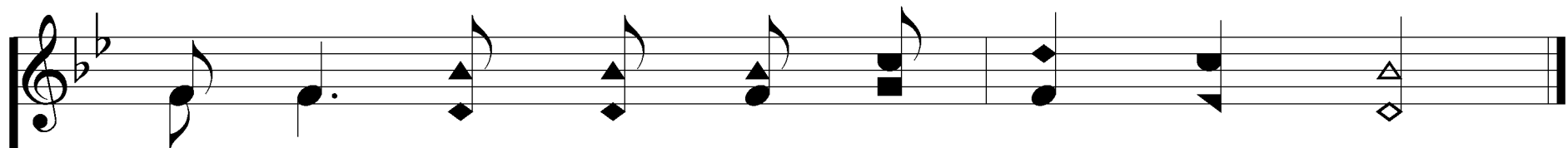
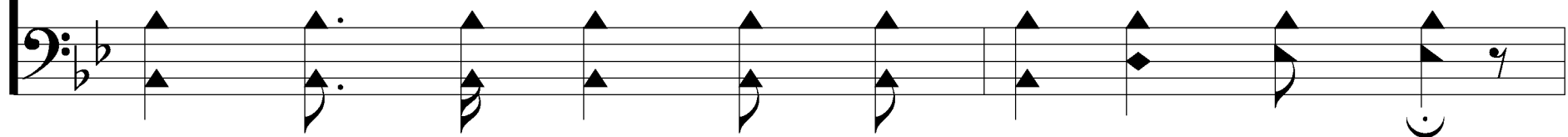


Will Jesus Find Us Watching

721



Say, will He find you and me still watch-ing,



Wait-ing, wait - ing when the Lord shall come?

